



modular definitions
by ege®

The modular definitions concept makes all geometric designs within the highline express collection available as exclusive modules in the size of 48x48 cm or 96x96 cm. In this brochure you will find 24 inspirational examples of the modular definitions, all available in full size samples.

The modular definitions concept also offers the option of geometric special designs as well as individual logo designs.

- Geometric designs
- Option of geometric special designs and individual logo designs
- 3 modular qualities from 630 g/m² to 1100 g/m² including loop pile
- Undisputed performance standard - EN1307, extra heavy use
- Patented ege® modular backing - 100% textile, PVC and bitumen free
- Dispatch within 3 weeks
- Minimum order: 1 box (4,61 m²)
- 24 definitions designs available as full size samples (48x48 cm) for dispatch within 24 hours in highline 1100

modular definitions

Das modular definitions Konzept ermöglicht die Lieferung von allen geometrischen Designs der highline-express-Kollektion im Fliesenformat 48x48 cm oder 96x96 cm. In der Broschüre 'modular definitions' präsentiert ege® 24 Beispiele, die alle als Musterfliese erhältlich sind.

Sie haben die Wahl von Einzelfliesen mit grafischem Rapport bis hin zu individuellen Logodesigns.

- Die Möglichkeit geometrischer Sonderanfertigungen und individueller Logodesigns
- 3 Fliesenqualitäten von 630 g/m² bis 1100 g/m² einschl. Loop
- Erfüllt die höchsten Anforderungen der Norm EN 1307, extrem belastbar
- Patentierter ege® - modular - Zweitrücken - 100% Textil, PVC- und Bitumen-frei
- Versand innerhalb von 3 Wochen
- Mindestbestellmenge: 1 Box (4,61 m²)
- 48 Stunden Musterservice für 24 definition - Designs in Qualität highline 1100 in original Fliesengröße (48x48 cm).

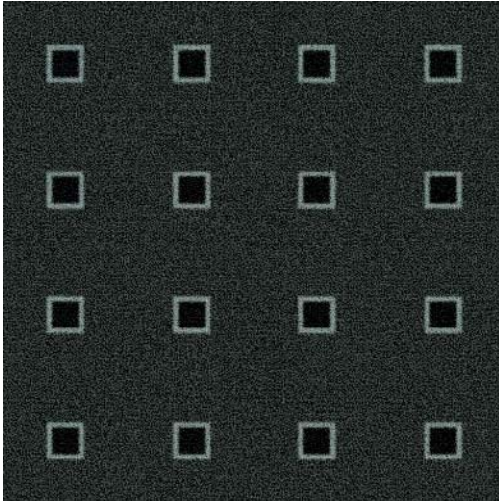
Le programme modular definitions met à votre disposition tous les dessins géométriques du programme highline express en dalles de format 48 cms x 48 cms ou 96 cms x 96 cms. Dans cette brochure vous trouverez 24 exemples de nos dalles modular definitions pour inspiration, disponibles également en grande taille.

Le programme modular definitions offre aussi la possibilité des dessins spéciaux géométriques ainsi que des dessins logo individuels.

- Dessins géométriques
- Possibilité des dessins spéciaux géométriques ainsi que des dessins logo individuels
- 3 qualités modular qualities de 630 g/m², 1100 g/m² et loop (bouclé 660)
- Standard de performance reconnu - Norme Européenne EN1307, usage intensif (classe 4)
- Dossier ege® modular breveté - 100% textile, sans PVC ni bitume
- Livraison sous 3 semaines
- Commande minimum: 1 carton de 20 dalles (4,61 m²)
- Disponibles en stock
- 24 dessins definitions disponibles en format 48 cms x 48 cms pour livraison sous 24 heures en highline 1100

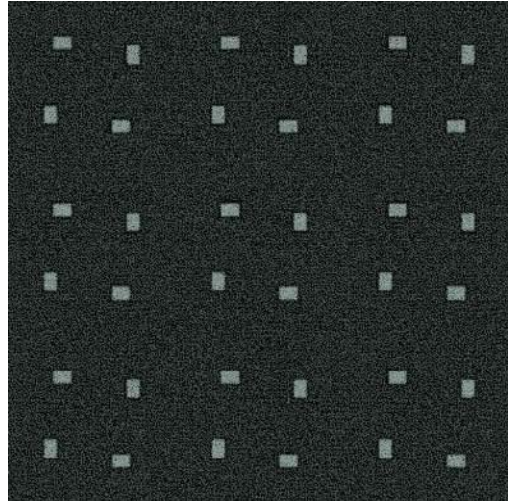


RFDM5220048 Around The Block Def.



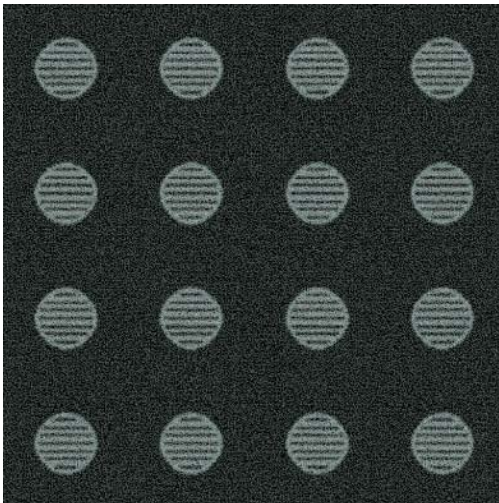
C01 C02 C03
gb9 gb12 gb8
Palette 5220

RFDM5220045 Sparks Def.



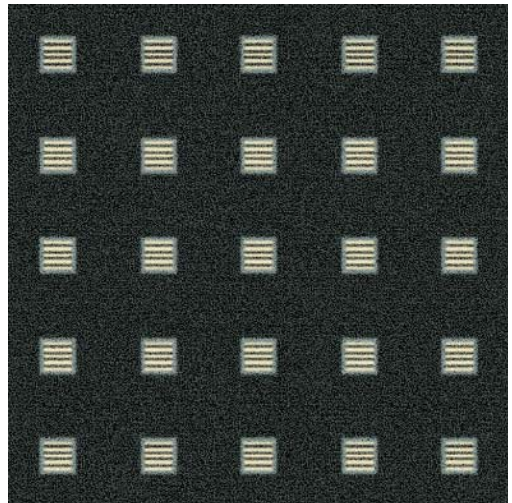
C01 C02 C03
gb9 gb12 gb8
Palette 5220

RFDM5220056 Striped Holes Def.



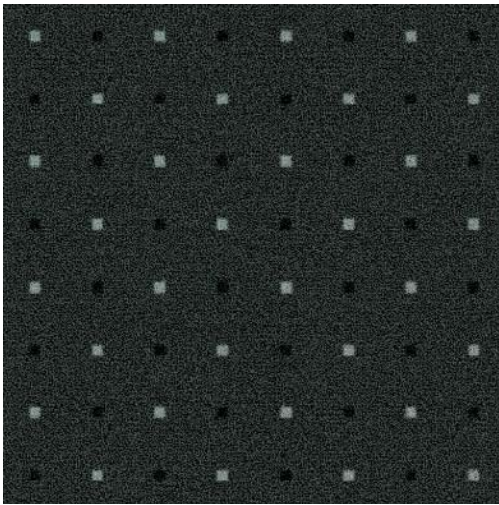
C01 C02
gb9 gb8
Palette 5220

RFT5220052 Cuff Links Def.



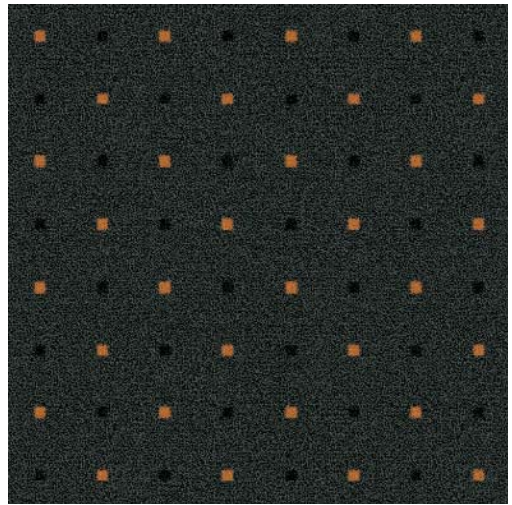
C01 C02 C03
gb9 gb1 gb8
Palette 5220

RFDM5220039 Square Dots Def.



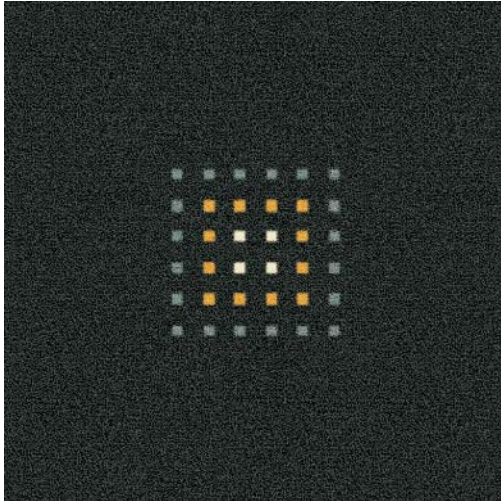
C01 C02 C03
gb9 gb12 gb8
Palette 5220

RFDM5220040 Square Dots Def.



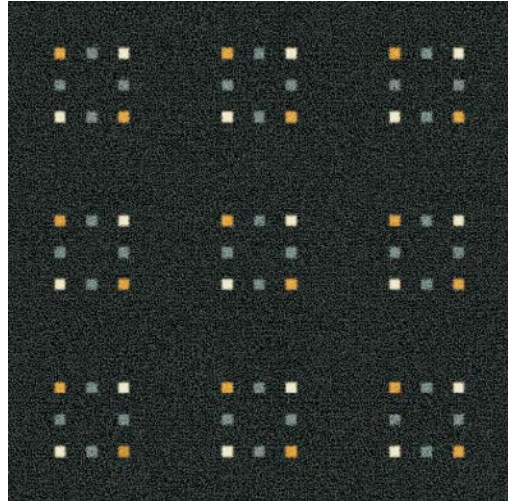
C01 C02 C03
gb9 gb12 gb3
Palette 5220

RFDM5220037 City Lights I Def.



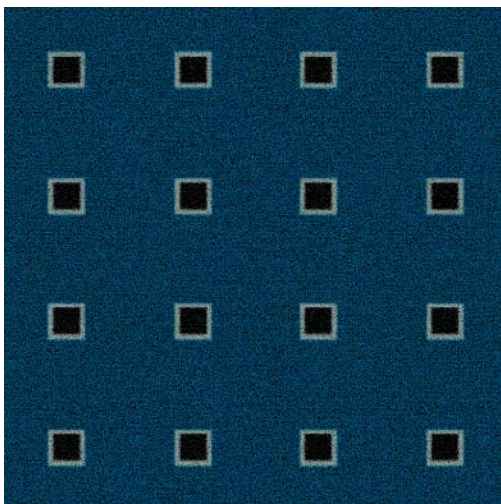
C01 C02 C03 C04
gb9 gb2 gb1 gb8
Palette 5220

RFDM5220043 City Lights III Def.



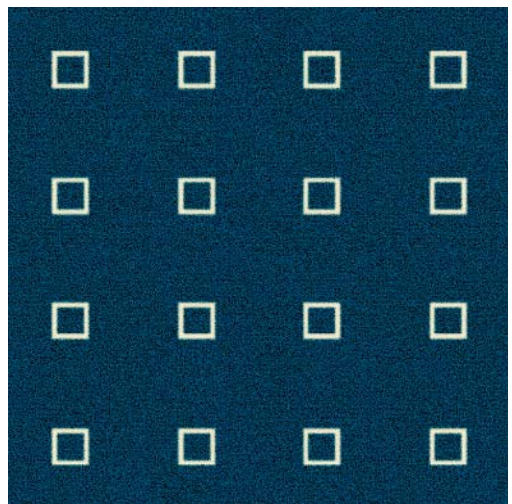
C01 C02 C03 C04
gb9 gb8 gb2 gb1
Palette 5220

RFDM5220049 Around The Block Def.



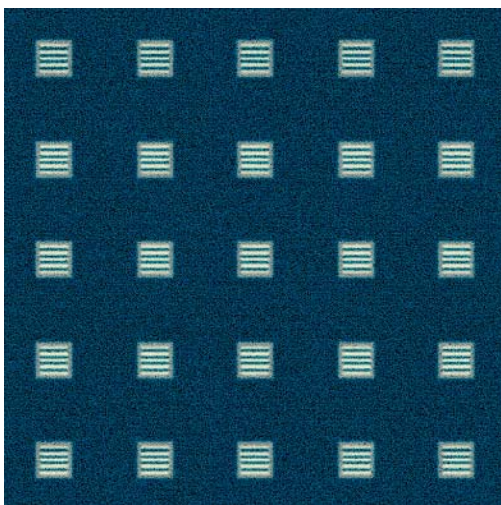
C01 C02 C03
gb11 gb12 gb8
Palette 5220

RFDM5220050 Around The Block Def.



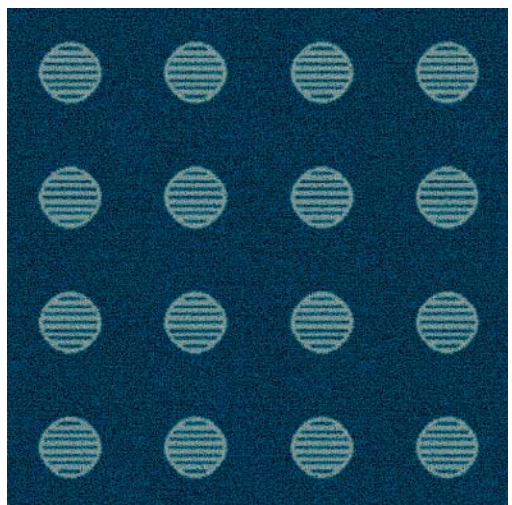
C01 C02
gb11 gb1
Palette 5220

RFDM5220053 Cuff Links Def.



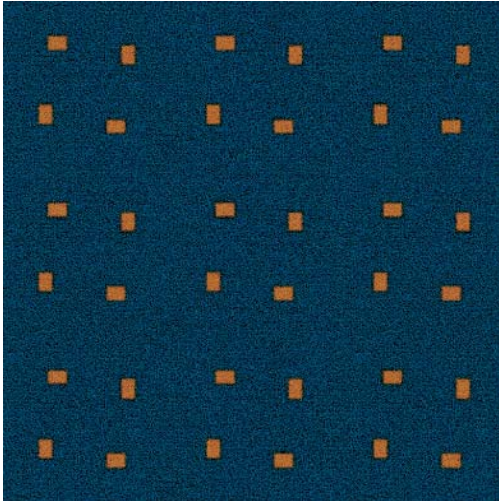
C01 C02 C03
gb11 gb1 gb8
Palette 5220

RFDM5220057 Striped Holes Def.



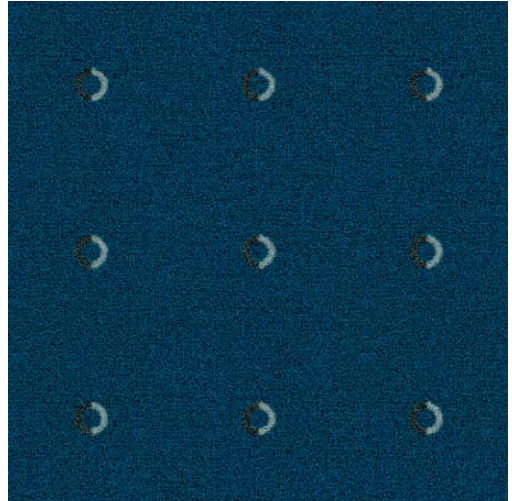
C01 C02
gb11 gb8
Palette 5220

RFDM5220046 Sparks Def.



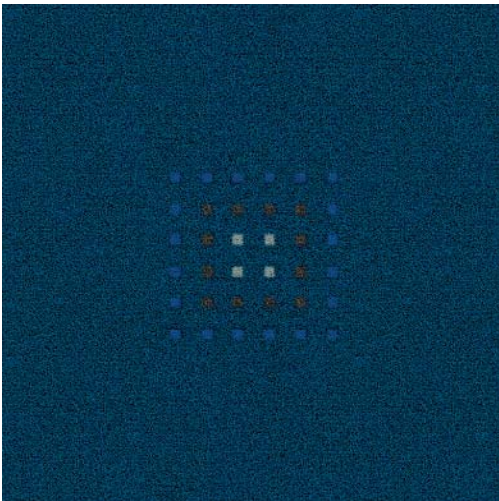
C01 C02 C03
gb11 gb12 gb3
Palette 5220

RFDM5220059 Smiths Ring Def.



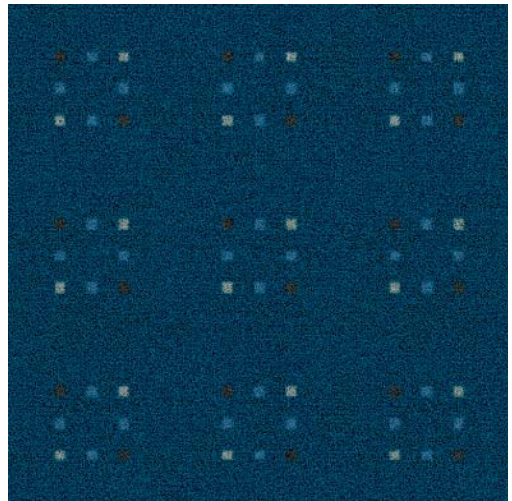
C01 C02 C03
gb11 gb9 gb8
Palette 5220

RFDM5220038 City Lights I Def.



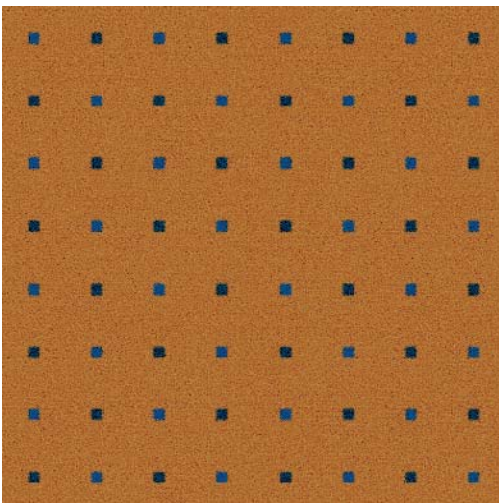
C01 C02 C03 C04
gb11 gb9 gb8 gb10
Palette 5220

RFDM5220044 City Lights III Def.



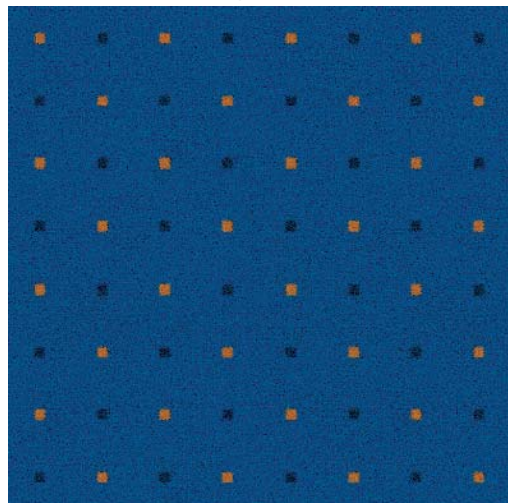
C01 C02 C03 C04
gb11 gb10 gb9 gb8
Palette 5220

RFDM5220042 Square Dots Def.



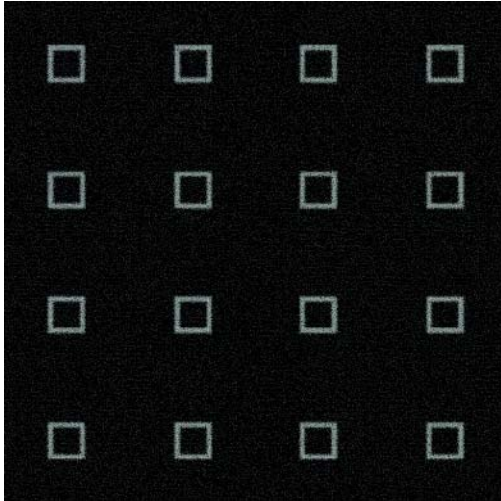
C01 C02 C03
gb3 gb11 gb10
Palette 5220

RFDM5220041 Square Dots Def.



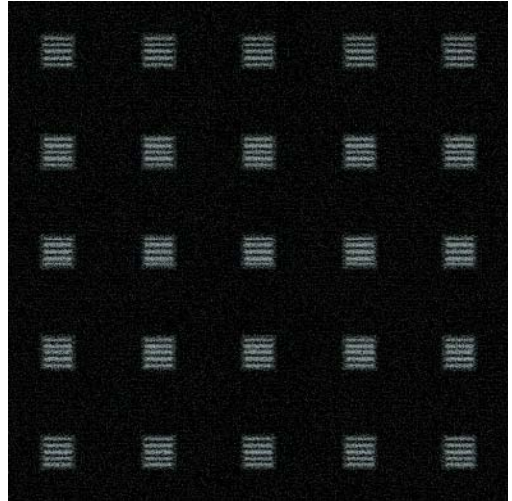
C01 C02 C03
gb10 gb11 gb3
Palette 5220

RFDM5220051 Around The Block Def.



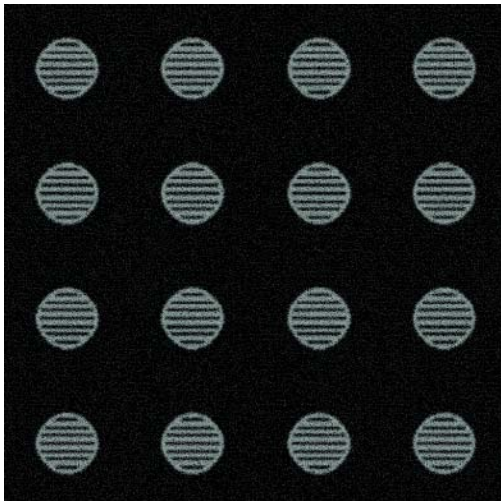
C01 C02
 gb12 gb8
 Palette 5220

RFDM5220055 Cuff Links Def.



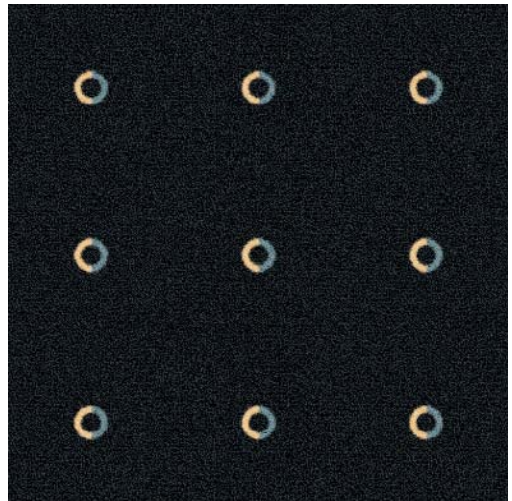
C01 C02 C03
 gb12 gb8 gb9
 Palette 5220

RFDM5220058 Striped Holes Def.



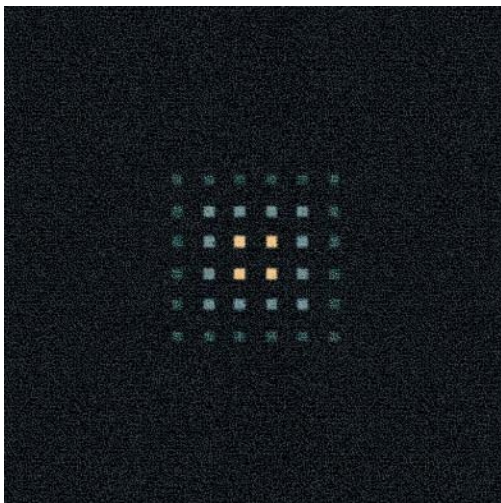
C01 C02
 gb12 gb8
 Palette 5220

RFDM5210037 Smiths Ring Def.



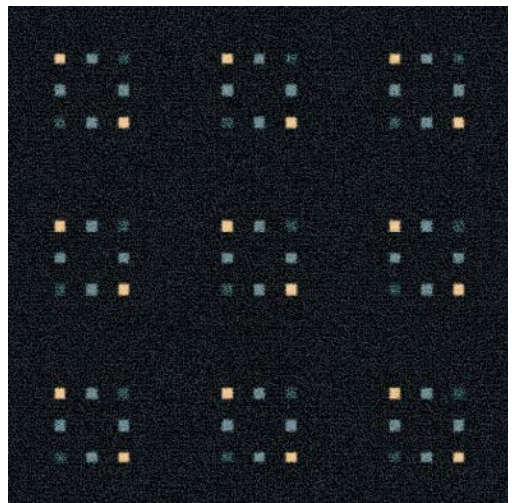
C01 C02 C03
 gb12 gb1 gb10
 Palette 5210

RFDM5210038 City Lights I Def.



C01 C02 C03 C04
 gb12 gb10 gb1 gb11
 Palette 5210

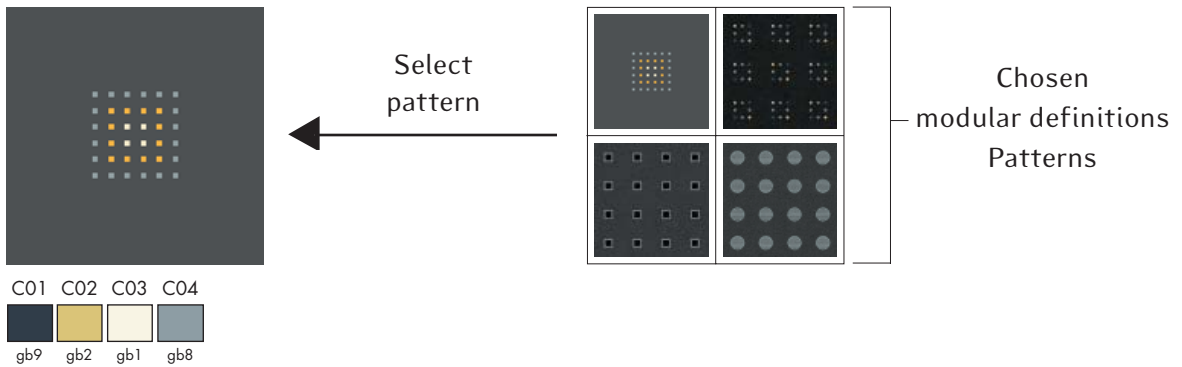
RFDM5210039 City Lights III Def.



C01 C02 C03 C04
 gb12 gb10 gb1 gb11
 Palette 5210

Recolouring

1. Select pattern



2. Select colour palette

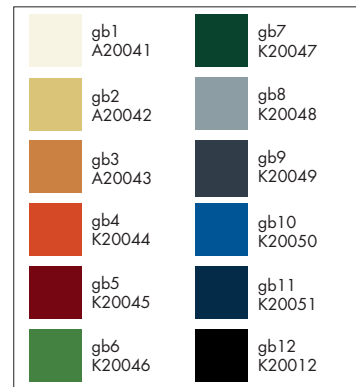
Palette 5200



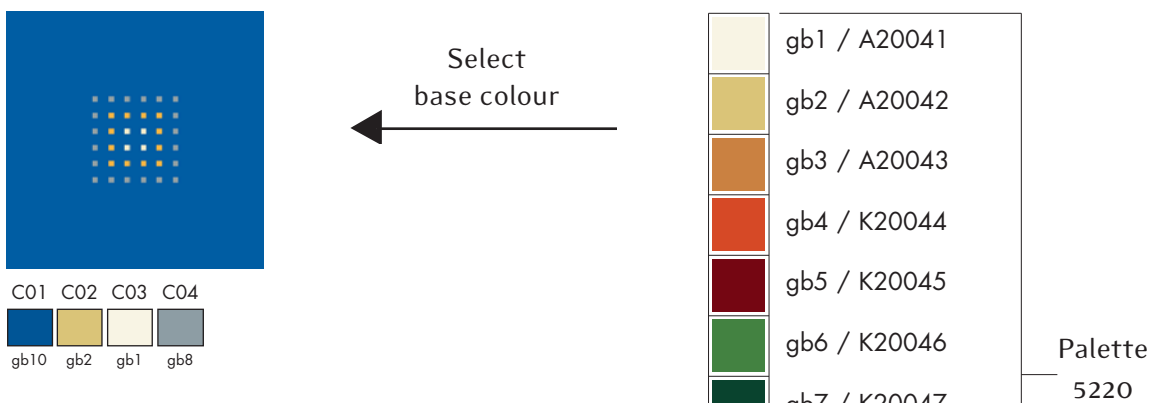
Palette 5210



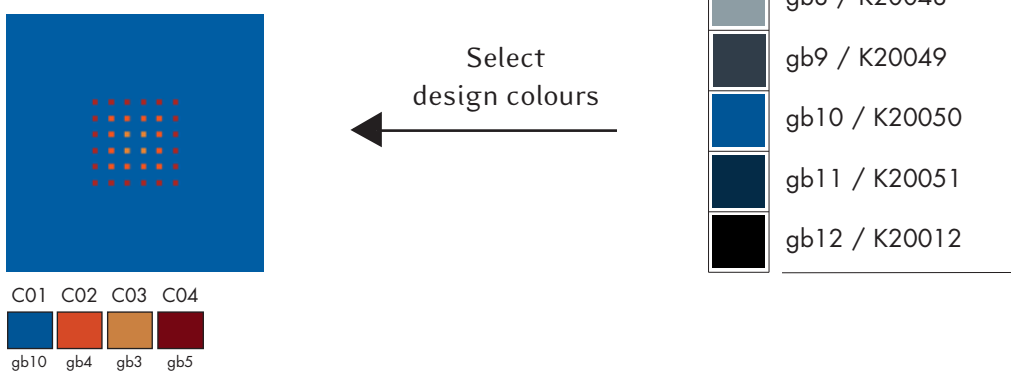
Palette 5220



3. Select ground colour



4. Select pattern colours



AUSTRIA

Höchsmann (east)
tel.: +43 2236 42746
fax: +43 2236 24807
h.hoehsmann@aon.at

Schiebel (west)
tel.: +43 6212 6974
fax: +43 6212 7795
schiebel@aon.at

BAHRAIN

BFG Commercial Services
tel.: +973 17 741 484
fax: +973 17 741 494
bfgcomm@batelco.com.bh

BELGIUM/LUXEMBOURG

Intercovering NV
tel.: +32 3 459 8538
fax: +32 3 459 8540
annevanderroost@intercovering.com

BOSNIA - HERZEGOVINA

Flooring d.o.o.
tel.: +387 (0)51 32 47 70
fax: +387 (0)51 32 47 71
sukale@inecco.net

BULGARIA

City Design Centre
tel.: +359 2 953 15 15
fax: +359 2 953 10 28
info@citydesigncentre.com

CANADA

Tappatec Inc.
tel.: +1 905 279 8882
fax: +1 905 279 0889
tappatec@sympatico.ca

CYPRUS

N&S Syrimis Contracts Ltd.
tel.: +357 2244 2243
fax: +357 2231 3399
syrimis.contracts@cytanet.com.cy

CZECH REPUBLIC

Optimal Servis Centrum s.r.o.
tel.: +420 2 8384 1565-6
fax: +420 2 8384 3180
info@optimal-servis.cz

DENMARK CONTRACT

ege contract a/s
tel.: +45 86 21 00 00
fax: +45 86 21 50 77
egecontract@ege.dk

ESTONIA

AS Lincona Konsult
tel.: +372 6 103 750
fax: +372 6 103 751
lincona@lincona.ee

FINLAND

OY Orient Occident Ltd.
tel.: +358 9 260 660
fax: +358 9 801 1227
floors2@orientoccident.fi

FRANCE

egetaepper france e.u.r.l.
tel.: +33 1 6912 3939
fax: +33 1 6912 3930
france@egecarpet.com

GERMANY

egetaepper (Deutschland)GmbH
tel.: +49 221- 969 727-0
fax: +49 221- 969 727-24
deutschland@egecarpet.com

GREECE

Wefi Print Hellas SA
tel.: +30 210 6100 797
fax: +30 210 6100 798
dimitri@wphellas.gr

HUNGARY

Top Trade Export-Import KFT.
tel.: +361 221 8926
fax: +361 383 2935
top.trade@mail.datanet.hu

INDIA

Applause Carpets
tel.: +91 11 2685 1400
fax: +91 11 2651 6160
apca@del2.vsnl.net.in

IRAN

Tarani Tecnical & Trading
tel.: +98 21 871 1613 & 14
+98 21 871 9612 & 13
fax: +98 21 872 8030
info@taranico.com

IRELAND

Provincial Floorcoverings Ltd.
tel.: +353 1 62 63 913
fax: +353 1 62 63 960

ITALY

Giovanni Comoletti
tel.: +39 0163 54444
fax: +39 0163 54433
comoletti@tin.it

KENYA

Spiegel Ltd.
tel.: +254 2 376 27 62
fax: +254 2 376 16 77
spiegel@accesskenya.com

KUWAIT

Ajal Contracting & General Trading Co.
tel.: +965 2427773
fax: +965 2423578
ajal@qualitynet.net

LATVIA

Baltiijas Gridu serviss sia
tel.: +371 7 063 780
fax: +370 7 063 781
bgs@actek.lv

LEBANON

Pictura SAL
tel./fax: +961 1 500 465
info@sommerlb.com

LITHUANIA

Ogrinda
tel.: +370 5 27 23 822
fax: +370 5 27 57 470
ogrinda.floor@takas.lt

MALTA

Better Living Centre
tel.: +356 21 695 601/2
fax: +356 21 661 029
info@betterlivingcentre.com

NETHERLANDS

Onstein Textiel Agenturen
tel.: +31 35 62 37 337
fax: +31 35 62 84 950
guytex@knoware.nl

NEW ZEALAND

Anthéz Projects Ltd.
tel.: +64 9 425 4561
fax: +64 9 425 4581
info@egecarpet.co.nz

NORWAY

egetepper norge a/s
tel.: +47 22 51 63 00
fax: +47 22 51 63 01
norge@egecarpet.com

OMAN

Alasfoor Furnishing LLC
tel.: +968 561 400
fax: +968 562 377
alafoco@omantel.net.om
alafurc@omantel.net.om

PAKISTAN

Seenqaaf Industrial Co.
tel.: +92 21 4522 485
fax: +92 21 4314 726
seenqaaf@cyber.net.pk

POLAND

Polmaster Co. Ltd.
tel.: +48 22 632 36 69
fax: +48 22 632 54 57
polmaster@polmaster.com.pl

Topwert Swiat Dywanow Sp. z.o.o.

tel.: +48 22 720 47 85
fax: +48 22 720 47 89

PORTUGAL

Decorpisus-Decoracoes Lda.
tel.: +351 21 454 81 60
fax: +351 21 454 81 69
decorpisus@netcabo.pt

P.R. CHINA - SHANGHAI

Trayton Trading
tel.: +86 21 6207 6767
fax: +86 21 6207 6750
mail@trayton.com

QATAR

Jameel Showroom
tel.: +974 4650101
fax: +974 4653777
aljameel@qatar.net.qa

RUSSIA

Ortgraph
tel.: +7 095 725-7844
fax: +7 095 725-7846
ortgraph@dol.ru

Brandi & Schnipper
tel.: +7 095 785 4000
fax: +7 095 785 4005
info@schnipper.ru

SERBIA AND MONTENEGRO

ITG d.o.o.
tel.: +381 11 632 787
fax: +381 11 186 460
itg.sr@eunet.yu

SINGAPORE

AlphaPac Connections
tel.: +65 9739 7097
fax: +65 6353 6483
haimengt@singnet.com.sg

SLOVAKIA

NOREM s.r.o.
tel.: +421 2 52 961 608
fax: +421 2 52 961 437
norem@gtinet.sk

SLOVENIA

Flooring d.o.o.
tel.: +386 1 500 5330
fax: +386 1 500 5360
info@flooring.si

SPAIN

Ibermoqueta ege, S.L.
tel.: +34 91 651 1121/651 1399
fax: +34 91 651 3305
ege@ibermoqueta.com

SWEDEN

egetepper sverige ab
tel.: +46 31 778 0050
fax: +46 31 778 1350
sverige@egecarpet.com

SWITZERLAND

Karl Schubiger - Textilagentur (east)
tel.: +41 079-419 58 50
fax: +41 01-941 41 05
ksc@egecarpet.com

Hans-Peter Imhof - ITEX Textilagentur (west)

tel.: +41 079-661 64 78
fax: +41 01-761 11 51
hpi@egecarpet.com

TURKEY

Integro Flooring
tel.: +90 212 327 33 33
fax: +90 212 327 88 57
info@integroflooring.com

UKRAINE

Stek
tel.: +380 44 2570074
fax: +380 44 2580155
import@stek.kiev.ua

Thermostrip

tel.: +380 44 49 40 095
fax: +380 44 49 40 096
t-strip@i.kiev.ua

UNITED ARAB EMIRATES

Gemaco Interiors
Abu Dhabi
tel.: +971 2 633 9100
fax: +971 2 633 9200

Dubai

tel.: +971 4 338 9500
fax: +971 4 338 9995
info@gemaco-uae.com

UNITED KINGDOM

ege carpets limited
tel.: +44 1257 239 000
fax: +44 1257 239 001
uk@egecarpet.com



Leverandør til det Kgl. Danske Hof
Purveyors to The Royal Danish Court

Head Office

egetæpper a/s • Industrivej Nord 25 • DK-7400 Herning • Tel. +45 97 11 88 11 • Fax: +45 97 11 95 80 • E-mail: ege@ege.dk • www.egecarpet.com