



modular stock
by ege®

The modular stock concept offers a range of more than 100 modular designs straight from stock, in a variation of textured and designed carpet tiles. Apart from the modular stock products shown in this brochure, the modular stock concept also covers the carré modular.

- Minimum order: 1 box (ca. 4.5 m²)
- Special colours from 200 m²
- 7 Modular stock qualities
- Undisputed performance standard EN1307
- Use classifications to fit any need; heavy & extra heavy use
- Patented ege® modular backing - 100% textile, NO pvc or bitumen
- 24 hours sample service (24x24 cm)
- Delivery straight from stock

modular stock

Das modular-stock-Konzept bietet eine Auswahl von über 100 lagernden Fliesendessins in einer Vielfalt von texturierten und gemusterten Teppichfliesen. Ausser den in diesem Prospekt gezeigten Produkten umfasst das modular-stock-Konzept auch carré modular.

- Mindestbestellmenge: 1 Box (ca. 4,5 m²)
- Sonderfarben ab 200 m²
- 7 Fliesenqualitäten
- Erfüllt die höchsten Anforderungen der Norm EN1307
- Verschiedene Gebrauchsklassifizierungen, um alle Ansprüche zu erfüllen - hohe bis extreme Belastbarkeit
- Patentierter ege® - modular - Zweitrücken - 100% Textil, pvc- und Bitumen-FREI
- 24 Stunden Musterservice in original Fliesengrösse (24x24 cm)
- Lieferung direkt ab Werk

Le programme modular stock offre une collection de plus de 100 références modular directement sur stock et propose un large choix de dalles texturées et dessinées. Outre les différents types proposés la brochure modular stock présente également la nouvelle collection carré.

- Commande minimum: 1 carton de 20 dalles (env. 4,5 m²)
- Couleurs spéciales à partir de 200 m²
- 7 qualités/grammages modular stock
- Standard de performance reconnu - Norme Européenne EN1307
- Classifications d'usage pour couvrir chaque besoin: usage élevé et très élevé
- Dossier ege® modular breveté - 100% textile, SANS pvc ni bitume
- Disponible en échantillons 24x24 cm pour expédition sous 24 heures
- Livraison directement sur stock



new york modular

0544150



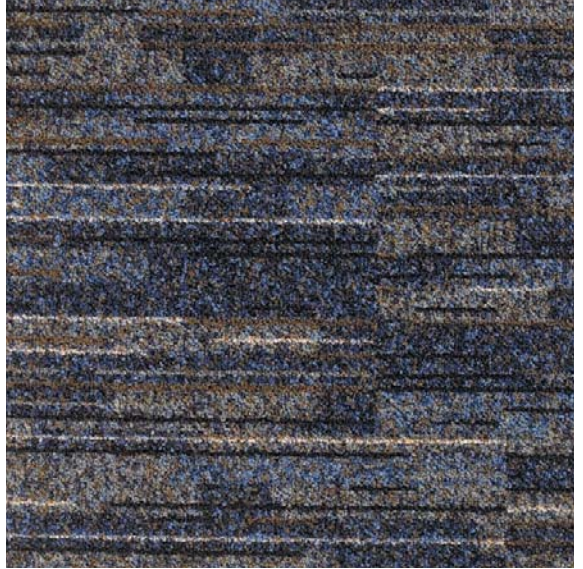
0544250



0544370



0544550



0544720



0544780

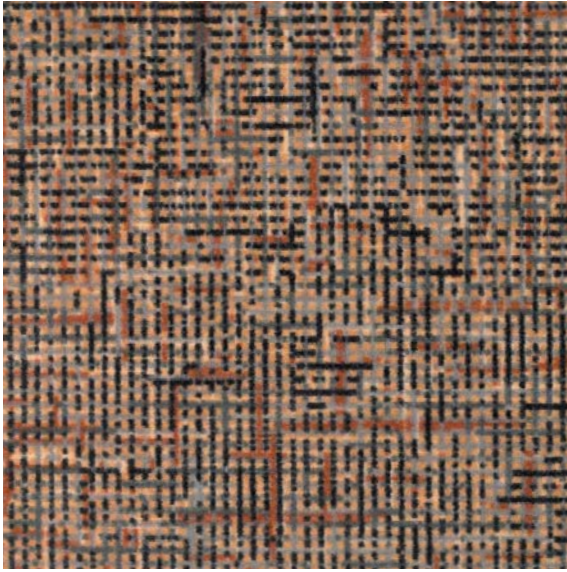




RF0542250

tokyo modular

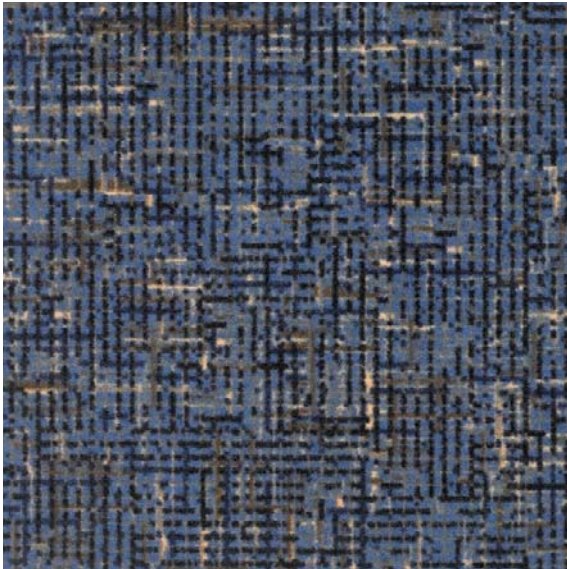
0542250



0542370



0542550



0542720



0542740

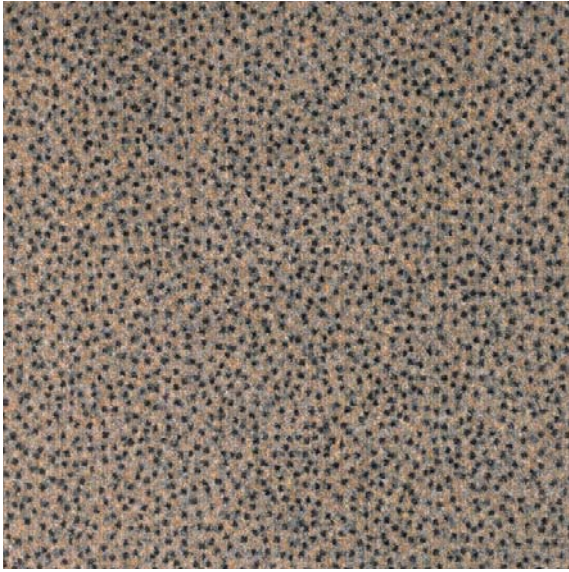


0542780

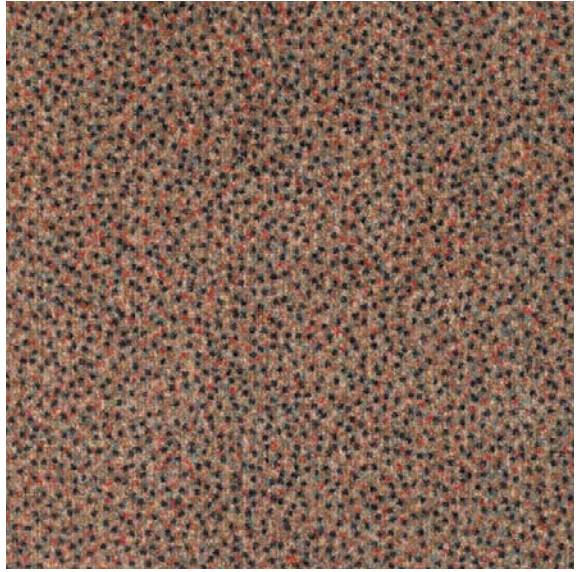


cairo modular

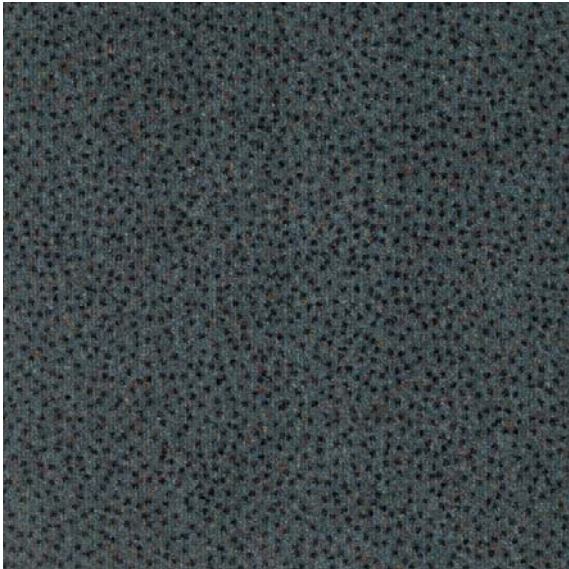
0543220



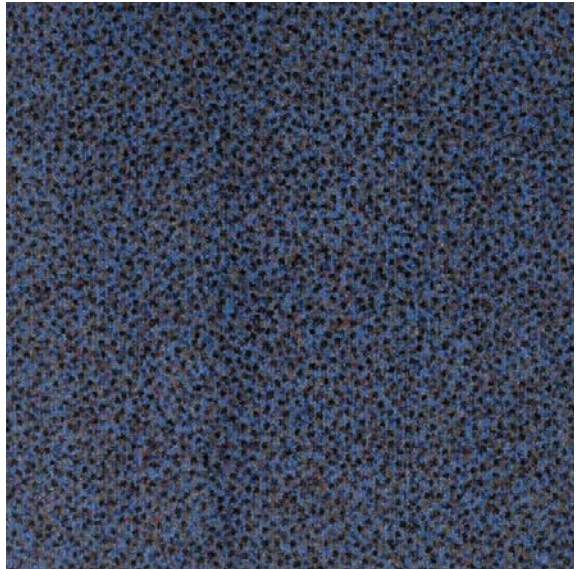
0543250



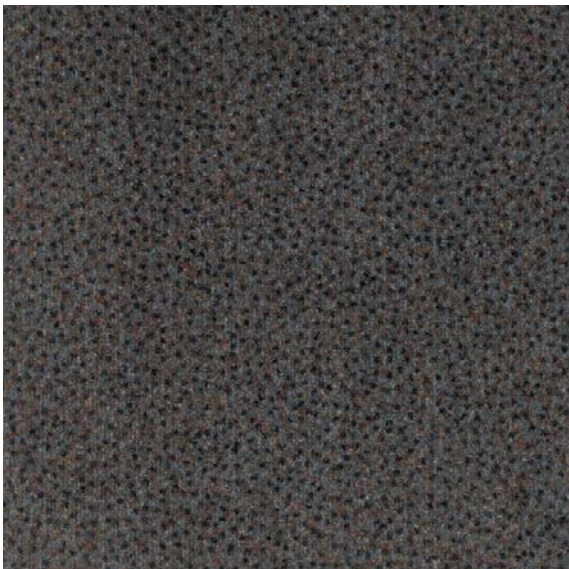
0543370



0543550

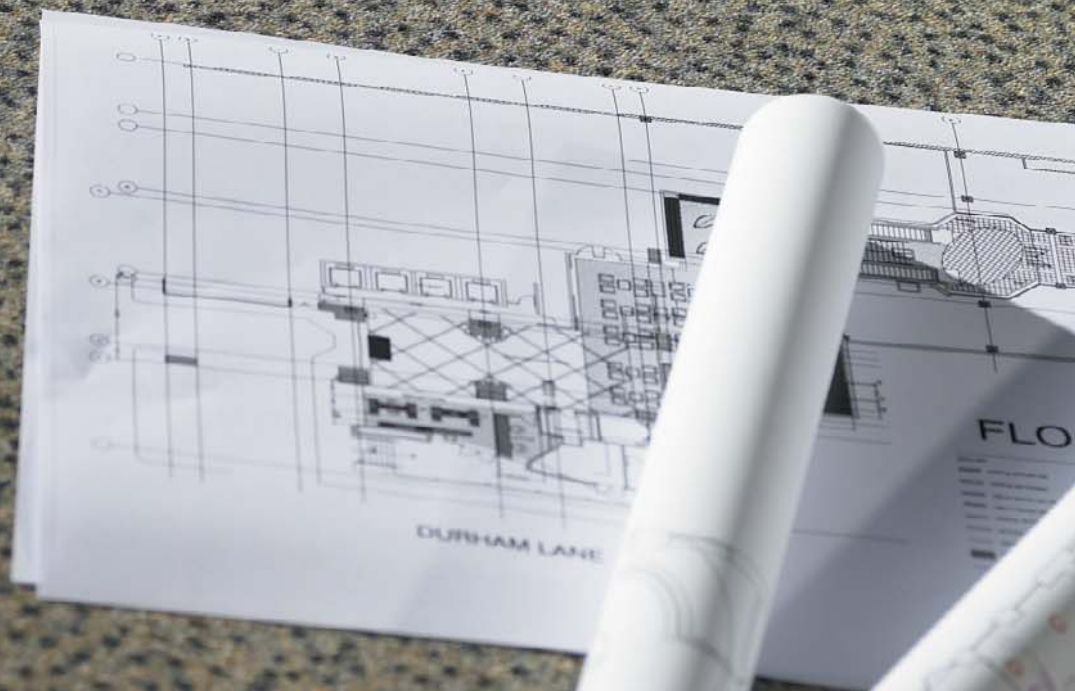


0543780



0543920





RF0543220

highline twist modular

0503250



0503270



0503320



0503350



0503650



0503180



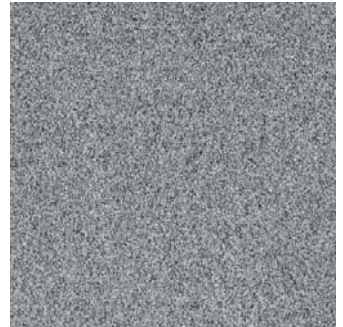
0503550



0503580



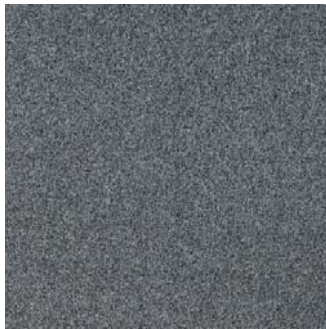
0503720



0503750



0503780



0503800



0503810



epoca classic modular

0468170



0468190



0468230



0468350



0468550



0468580



0468720



0468730



0468750



0468780



0468790



0468800



0468810



contra modular

0461340



0461550



0461580



0461730



0461780



0461800



AUSTRIA

Höchsmann (east)
tel.: +43 2236 42746
fax: +43 2236 24807
h.hoehsmann@aon.at

Schiebel (west)
tel.: +43 6212 6974
fax: +43 6212 7795
schiebel@aon.at

BAHRAIN

BFG Commercial Services
tel.: +973 17 741 484
fax: +973 17 741 494
bfgcomm@batelco.com.bh

BELGIUM/LUXEMBOURG

Intercovering NV
tel.: +32 3 459 8538
fax: +32 3 459 8540
annevanderroost@intercovering.com

BOSNIA - HERZEGOVINA

Flooring d.o.o.
tel.: +387 (0)51 32 47 70
fax: +387 (0)51 32 47 71
sukale@inecco.net

BULGARIA

City Design Development Ltd.
tel.: +359 2 953 15 15
fax: +359 2 953 10 28
info@citydesigncentre.com

CANADA

Tappatec Inc.
tel.: +1 905 279 8882
fax: +1 905 279 0889
tappatec@sympatico.ca

CYPRUS

N&S Syrimis Contracts Ltd.
tel.: +357 2244 2243
fax: +357 2231 3399
syrimis.contracts@cytanet.com.cy

CZECH REPUBLIC

Optimal Servis Centrum s.r.o.
tel.: +420 2 8384 1565-6
fax: +420 2 8384 3180
info@optimal-servis.cz

DENMARK CONTRACT

ege contract a/s
tel.: +45 86 21 00 00
fax: +45 86 21 50 77
egecontract@ege.dk

ESTONIA

AS Lincona Konsult
tel.: +372 6 103 750
fax: +372 6 103 751
lincona@lincona.ee

FINLAND

OY Orient Occident Ltd.
tel.: +358 9 260 660
fax: +358 9 801 1227
floors2@orientoccident.fi

FRANCE

egetaepper france e.u.r.l.
tel.: +33 1 6912 3939
fax: +33 1 6912 3930
france@egecarpet.com

GERMANY

egetaepper (Deutschland)GmbH
tel.: +49 221- 969 727-0
fax: +49 221- 969 727-24
deutschland@egecarpet.com

GREECE

Weff Print Hellas SA
tel.: +30 210 6100 797
fax: +30 210 6100 798
dimitri@wphellas.gr

HUNGARY

Top Trade Export-Import KFT.
tel.: +361 221 8926
fax: +361 383 2935
top.trade@mail.datanet.hu

INDIA

Applause Carpets
tel.: +91 11 2685 1400
fax: +91 11 2651 6160
apca@del2.vsnl.net.in

IRAN

Tarani Technical & Trading
tel.: +98 21 871 1613 & 14
+98 21 871 9612 & 13
fax: +98 21 872 8030
info@taranico.com

IRELAND

On Provincial Floorcovering
tel.: +353 61 41 20 33
fax: +353 61 41 21 48

ITALY

Giovanni Comoletti
tel.: +39 0163 54444
fax: +39 0163 54433
comoletti@tin.it

KENYA

Spiegel Ltd.
tel.: +254 2 376 27 62
fax: +254 2 376 16 77
spiegel@accesskenya.com

KUWAIT

Ajal Contracting & General Trading Co.
tel.: +965 2427773
fax: +965 2423578
ajal@qualitynet.net

LATVIA

SIA Baltijas Gridu serviss
tel.: +371 7 063 780
fax: +371 7 063 781
bgs@bgs.lv

LEBANON

Pictura SAL
tel.: +961 1 487 853
fax: +961 1 500 465
info@sommerlb.com

LITHUANIA

Ogrinda
tel.: +370 5 27 23 822
fax: +370 5 27 57 470
ogrinda.floor@takas.lt

MACAU

Pou Fung Hong
tel.: +853 557 742
fax: +853 590 718
poufung@macau.ctm.net

MALTA

Better Living Centre
tel.: +356 21 695 601/2
fax: +356 21 661 029
info@betterlivingcentre.com

NETHERLANDS

Onstein Textiel Agenturen
tel.: +31 35 62 37 337
fax: +31 35 62 84 950
guytex@knoware.nl

NEW ZEALAND

Anthéz Projects Ltd.
tel.: +64 9 425 4561
fax: +64 9 425 4581
info@egecarpet.co.nz

NORWAY

egetaepper norge a/s
tel.: +47 67 87 67 50
fax: +47 67 87 67 51
norge@egecarpet.com

OMAN

Alasfoor Furnishing LLC
tel.: +968 561 400
fax: +968 562 377
alafoco@omantel.net.om
alafurc@omantel.net.om

PAKISTAN

Seenqaaf Industrial Co.
tel.: +92 21 4522 485
fax: +92 21 4314 726
seenqaaf@cyber.net.pk

POLAND

Polmaster Co. Ltd.
tel.: +48 22 632 36 69
fax: +48 22 631 18 45
polmaster@polmaster.com.pl

Topwert Swiat Dywanow Sp. z.o.o.

tel.: +48 22 720 47 85
fax: +48 22 720 47 89

PORTUGAL

Decorpisus-Decorações Lda.
tel.: +351 21 454 81 60
fax: +351 21 454 81 69
decorpisus@netcabo.pt

P.R. CHINA - SHANGHAI

Trayton Group
tel.: +86 21 6296 1999
fax: +86 21 6296 1940
mail@trayton.com

QATAR

Jameel Showroom
tel.: +974 4650101
fax: +974 4653777
aljameel@qatar.net.qa

RUSSIA

Ortgraph
tel.: +7 095 725-7844
fax: +7 095 725-7846
ortgraph@dol.ru

Brandi & Schnipper
tel.: +7 095 785 4000
fax: +7 095 785 4005
info@schnipper.ru

SERBIA AND MONTENEGRO

ITG d.o.o.
tel.: +381 11 632 787
fax: +381 11 186 460
itg.sr@eunet.yu

SINGAPORE

AlphaPac Connections
tel.: +65 9739 7097
fax: +65 6353 6483
haimengt@singnet.com.sg

SLOVAKIA

NOREM s.r.o.
tel.: +421 2 52 961 608
fax: +421 2 52 961 437
norem@gtinet.sk

SLOVENIA

Flooring d.o.o.
tel.: +386 1 500 5330
fax: +386 1 500 5360
info@flooring.si

SPAIN

Ibermoqueta ege, S.L.
tel.: +34 91 651 1121/651 1399
fax: +34 91 651 3305
ege@ibermoqueta.com

SWEDEN

egetaepper sverige ab
tel.: +46 31 778 0050
fax: +46 31 778 1350
sverige@egecarpet.com

SWITZERLAND

Karl Schubiger - Textilagentur (east)
tel.: +41 079-419 58 50
fax: +41 01-941 41 05
ksc@egecarpet.com

Hans-Peter Imhof - ITEX Textilagentur (west)

tel.: +41 079-661 64 78
fax: +41 01-761 11 51
hpi@egecarpet.com

TURKEY

Integro Flooring
tel.: +90 212 327 33 33
fax: +90 212 327 88 57
info@integroflooring.com

UKRAINE

Stek
tel.: +380 44 2570074
fax: +380 44 2580155
import@stek.kiev.ua

Thermostrip
tel.: +380 44 49 40 095
fax: +380 44 49 40 096
t-strip@i.kiev.ua

UNITED ARAB EMIRATES

Gemaco Interiors
Abu Dhabi
tel.: +971 2 633 9100
fax: +971 2 633 9200

Dubai
tel.: +971 4 338 9500
fax: +971 4 338 9995
info@gemaco-uae.com

UNITED KINGDOM

ege carpets limited
tel.: +44 1257 239 000
fax: +44 1257 239 001
uk@egecarpet.com



Leverandør til det Kgl. Danske Hof
Purveyors to The Royal Danish Court

Head Office

egetaepper a/s • Industrivej Nord 25 • DK-7400 Herning • Tel. +45 97 11 88 11 • Fax: +45 97 11 95 80 • E-mail: ege@ege.dk • www.egecarpet.com

www.egecarpet.com

ege[®]



Leverandør til det Kgl. Danske Hof
Purveyors to The Royal Danish Court

Head Office

egetæpper a/s • Industrivej Nord 25 • DK-7400 Herning • Tel. +45 97 11 88 11 • Fax: +45 97 11 95 80 • E-mail: ege@ege.dk • www.egecarpet.com