

# CARRÉ MODULAR

**ege**<sup>®</sup>

we create more than carpets



PAGE	REF. NAME
4	Introduction
6-7	Sydney
8-9	New York
10-11	Nairobi
12-13	Helsinki
14-19	Song Lines
20-21	Stream Lines
22-23	Stippled Lines
24-25	Split Lines
26-28	Collection overview
29	Ordering no. for broadloom and stock

Carré by ege is a collection of exclusive 48 x 48 cm modules offering eight modern modular designs all available in a wide variety of colour combinations. Carré by ege is an extremely flexible flooring solution making it possible to adapt each room to the constant changes a building goes through. Carré by ege is easy to handle, install and replace. Tiles can be removed whenever needed, providing easy and flexible access to the raised floor system. To ensure a healthy indoor climate, carré by ege is provided with the easy to fit, 100% textile modular backing. All tiles from ege are tested and approved in accordance with the Danish Indoor Climate Labelling (DICI). This serves as a guarantee that tiles from ege do not contain or emit any forms of unwanted or harmful substances.

Some of the carré designs are available as broadloom. See overview and ordering numbers at the back of the catalogue.

# carré modular

## Carré by ege offers:

- 8 modern designs available in a wide variety of colour combination
- Special size – 96 x 96 cm – from 200m<sup>2</sup>
- Undisputed performance standard – EN 1307
- Use classification to fit any need; heavy and extra heavy use
- Patented ege modular backing – 100% textile containing no PVC or any other harmful substances
- Dispatch within 4 weeks from receipt of order- min. 200 m<sup>2</sup>
- 24 hours sample service in sizes 24 x 24 cm + 48 x 48 cm

As with many modern modular tiles, it may on very limited occasions be necessary on certain designs to simply move one or two tiles to remove any accidental banding.

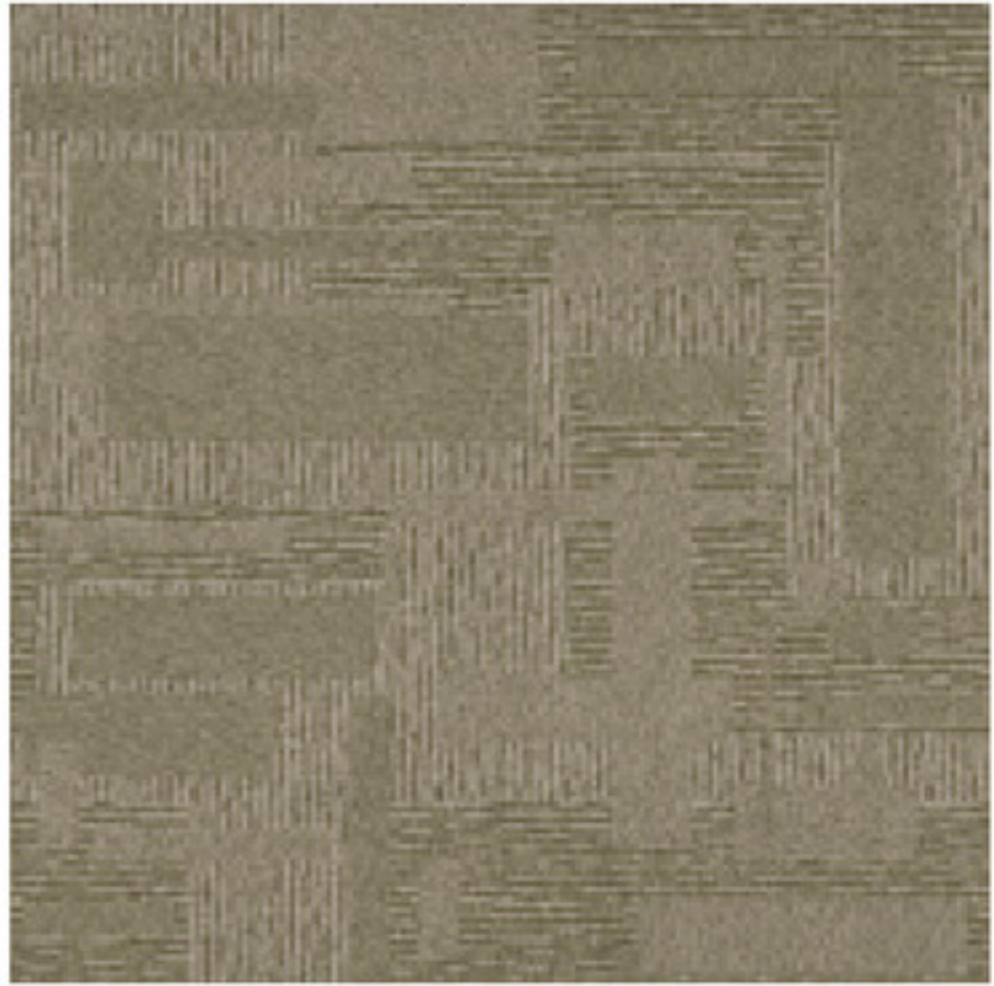


RFM52954200 Sydney col. 5295



C1 C2  
GB1 GB9

RFM52954201 Sydney col. 5295



C1 C2  
GB8 GB1

RFM52954202 Sydney col. 5295



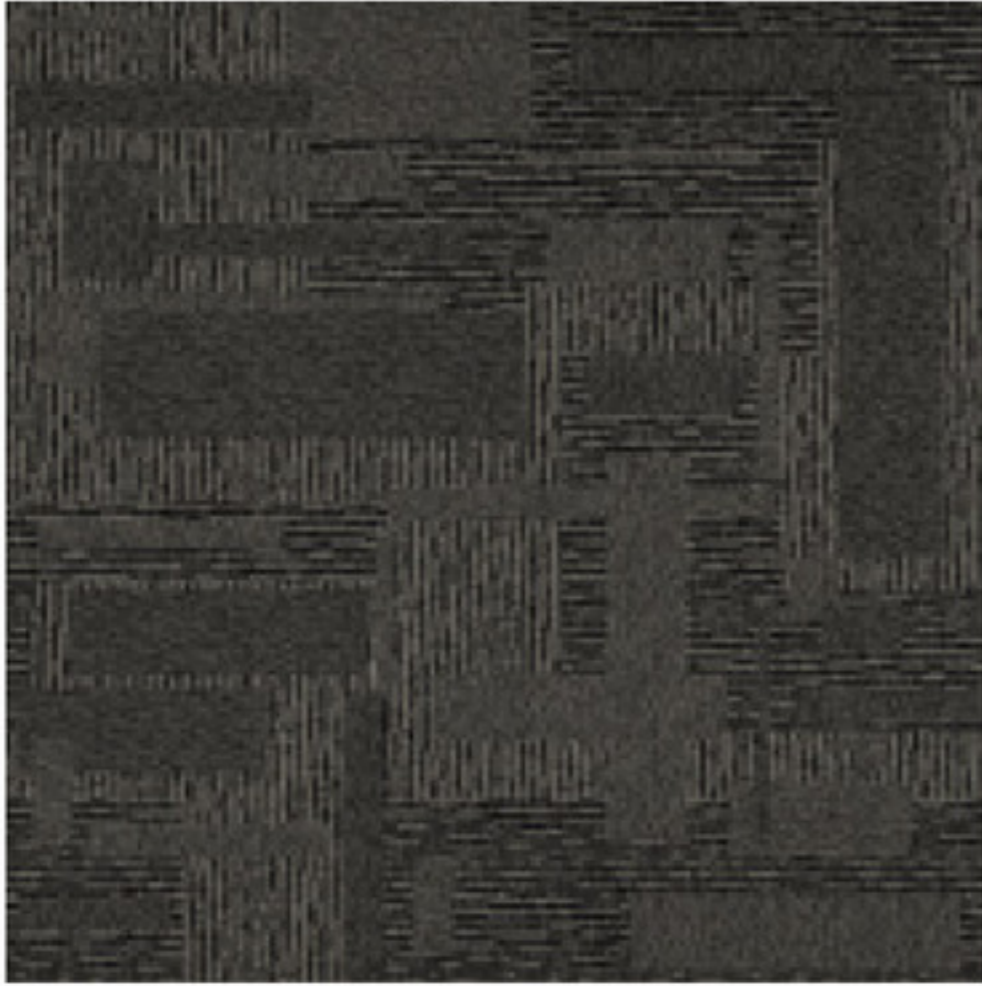
C1 C2  
GB1 GB2

RFM52954203 Sydney col. 5295



C1 C2  
GB1 GB3

RFM52954205 Sydney col. 5295



C1 C2  
GB4 AC16

RFM52954208 Sydney col. 5295



C1 C2  
GB11 AC37

RFM52204202 Sydney col. 5220



C1 C2  
GB8 AC68

RFM52954206 Sydney col. 5295



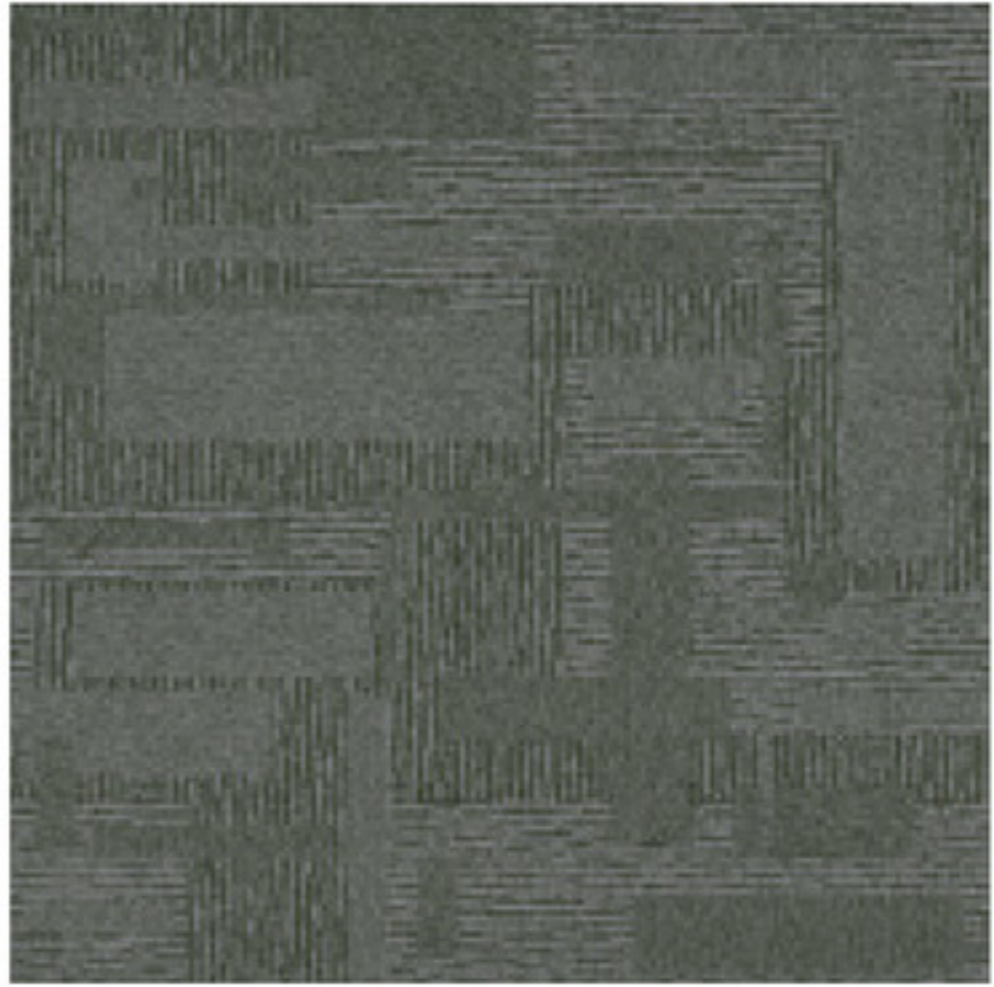
C1 C2  
GB6 AC43

RFM52954207 Sydney col. 5295



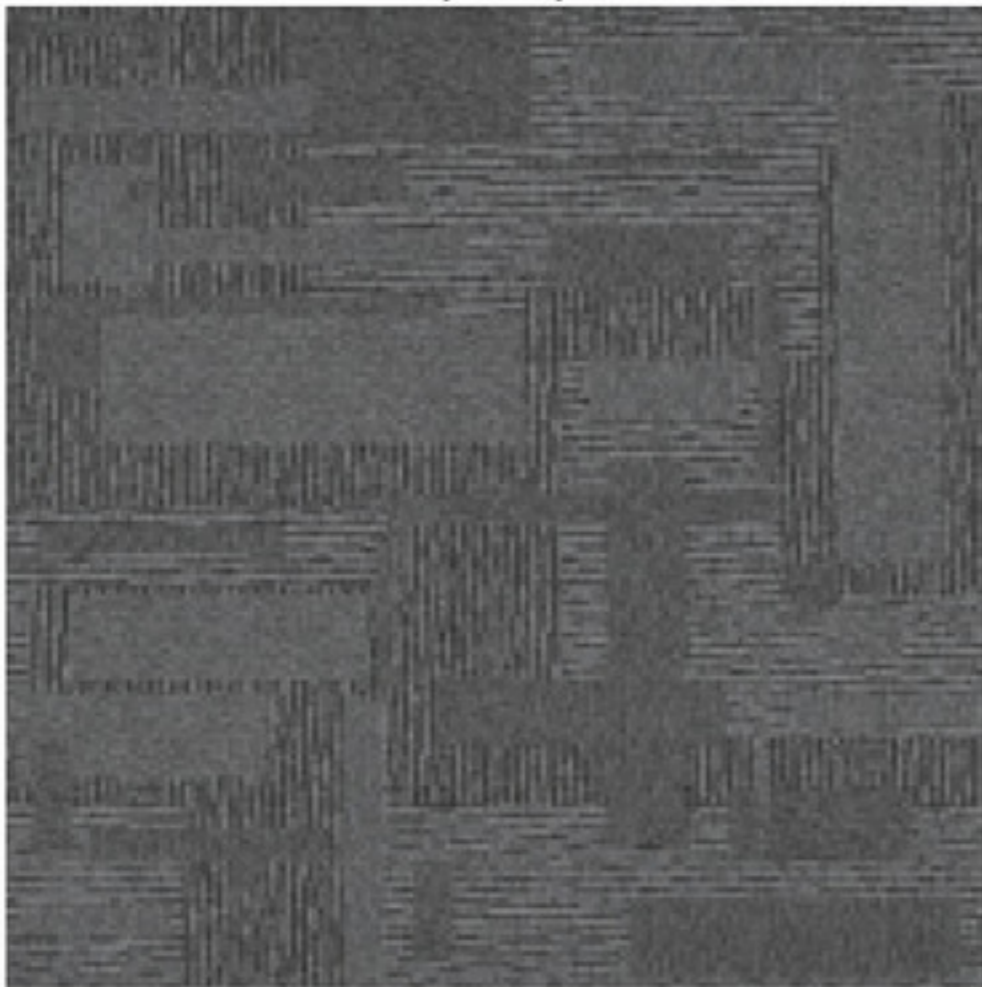
C1 C2  
GB5 AC19

RFM52204203 Sydney col. 5220



C1 C2  
GB8 AC61

RFM52204200 Sydney col. 5220



C1 C2  
GB8 AC54

RFM52204201 Sydney col. 5220



C1 C2  
GB12 GB9

RFM52954210 New York col. 5295



C1 C2 C3 C4 C5 C6  
AC16 AC14 AC24 GB1 AC26 AC27

RFM52954211 New York col. 5295



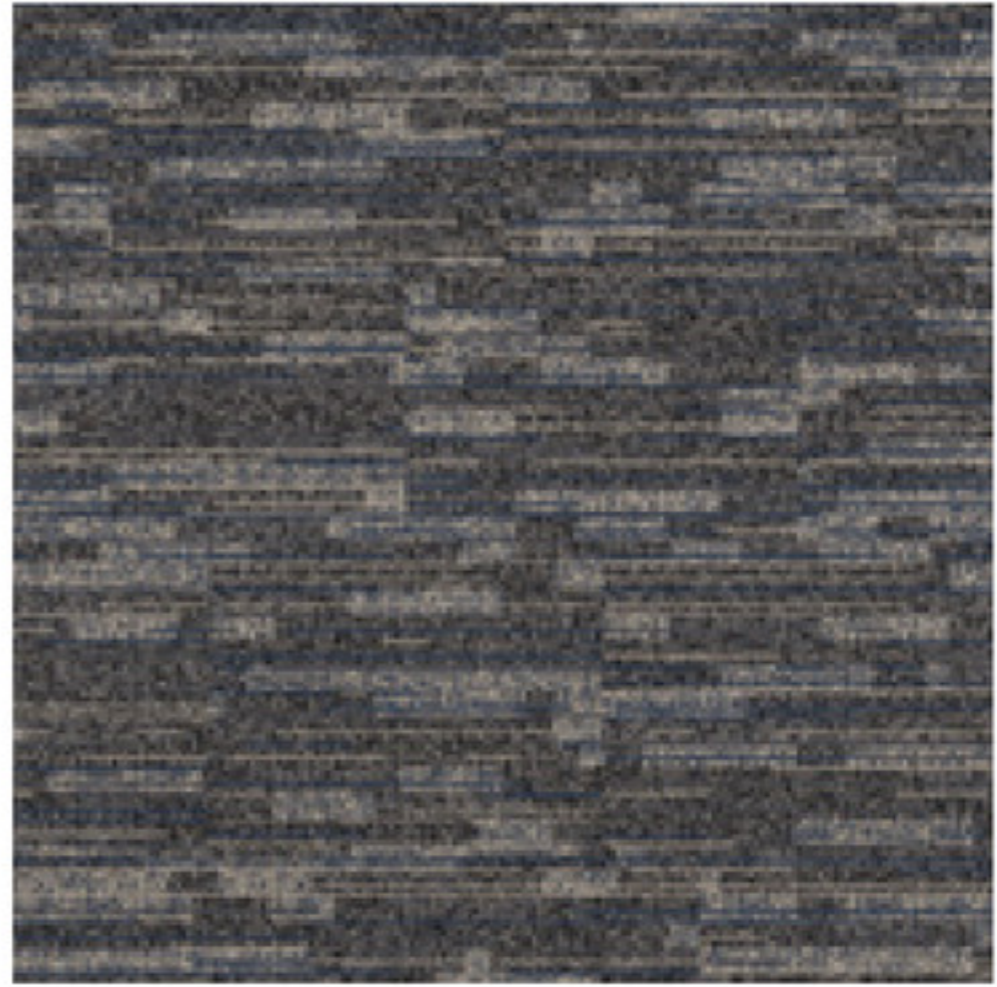
C1 C2 C3 C4 C5 C6  
GB2 GB12 AC27 GB1 AC25 GB3

RFM52954212 New York col. 5295



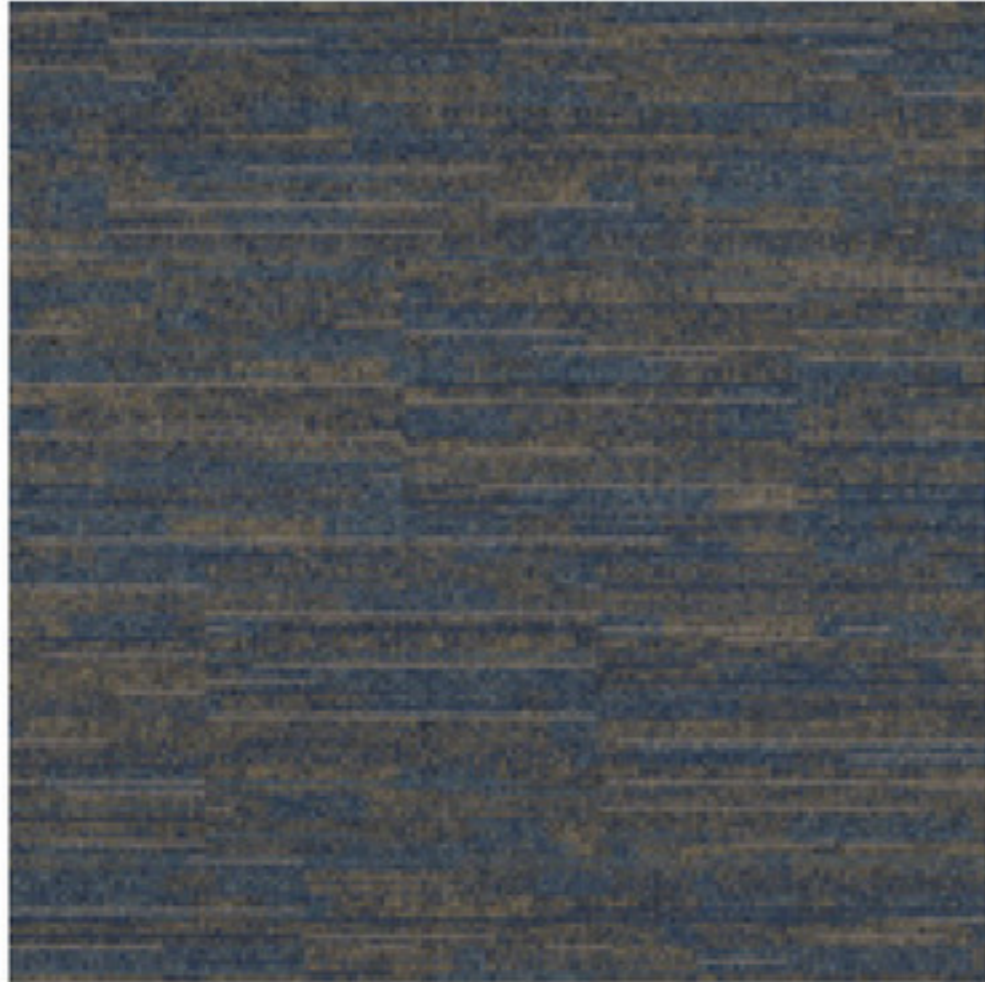
C1 C2 C3 C4  
GB3 GB1 GB2 GB12

RFM52954213 New York col. 5295



C1 C2 C3 C4 C5  
GB6 GB1 GB3 GB2 GB12

RFM52954214 New York col. 5295



C1 C2 C3 C4 C5 C6  
AC43 AC18 AC19 GB2 GB3 GB9 AC27

RFM52954215 New York col. 5295



C1 C2 C3 C4  
AC37 GB11 AC36 AC34



RFM52954216 New York

col. 5295



AC41 GB10 AC36 AC40 AC34

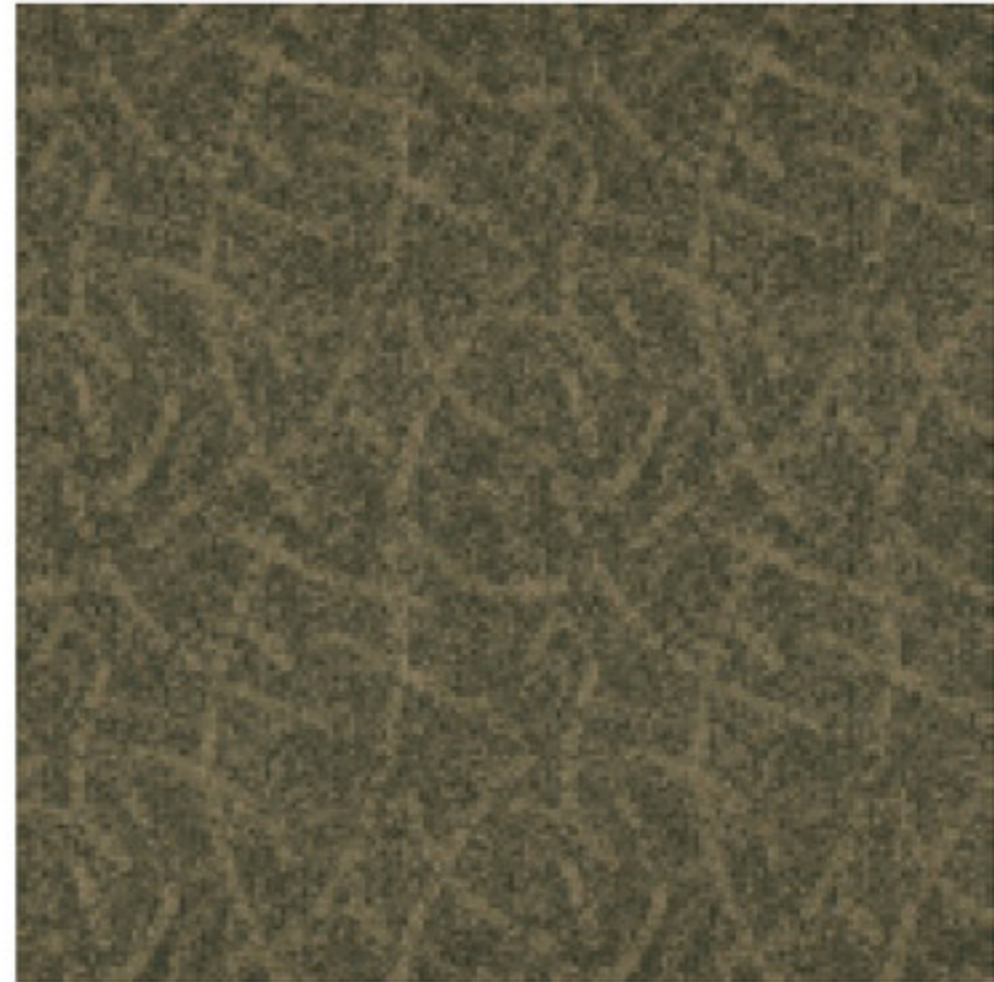


RFM52954214 New York

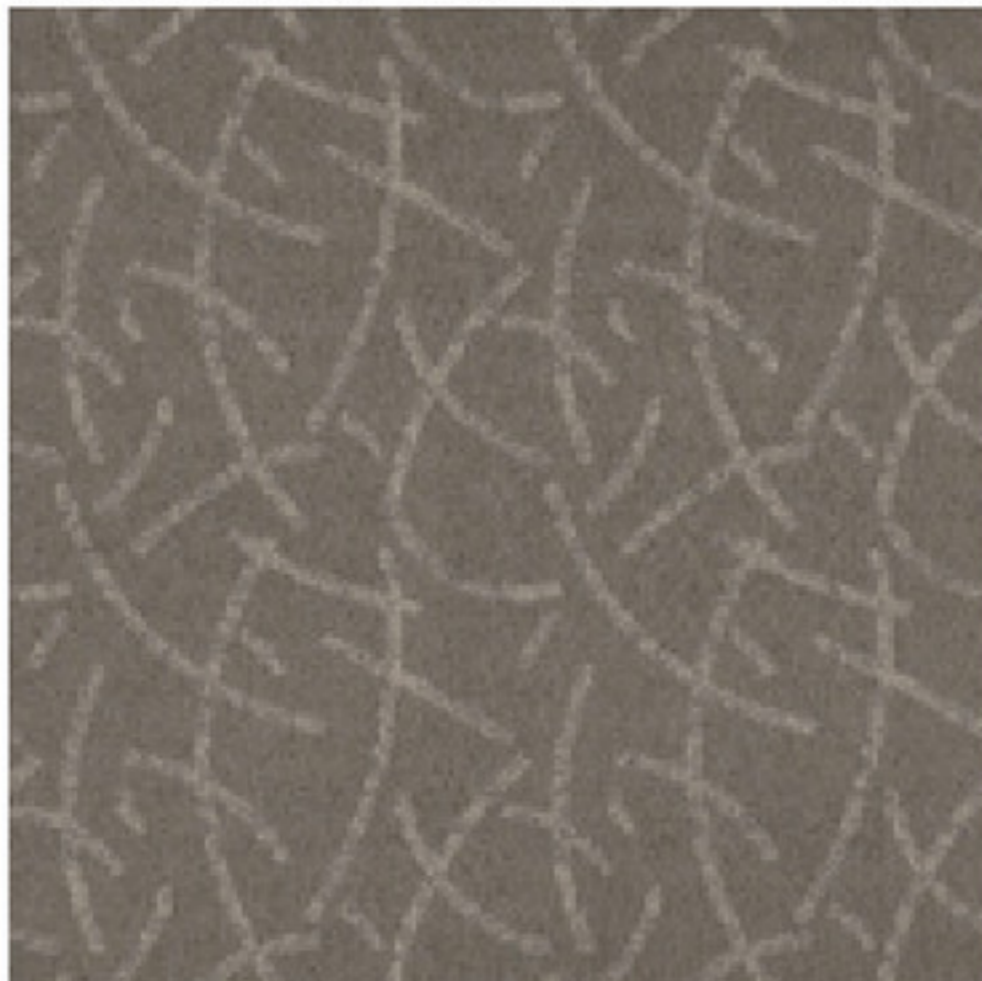
RFM52954224 Nairobi col. 5295



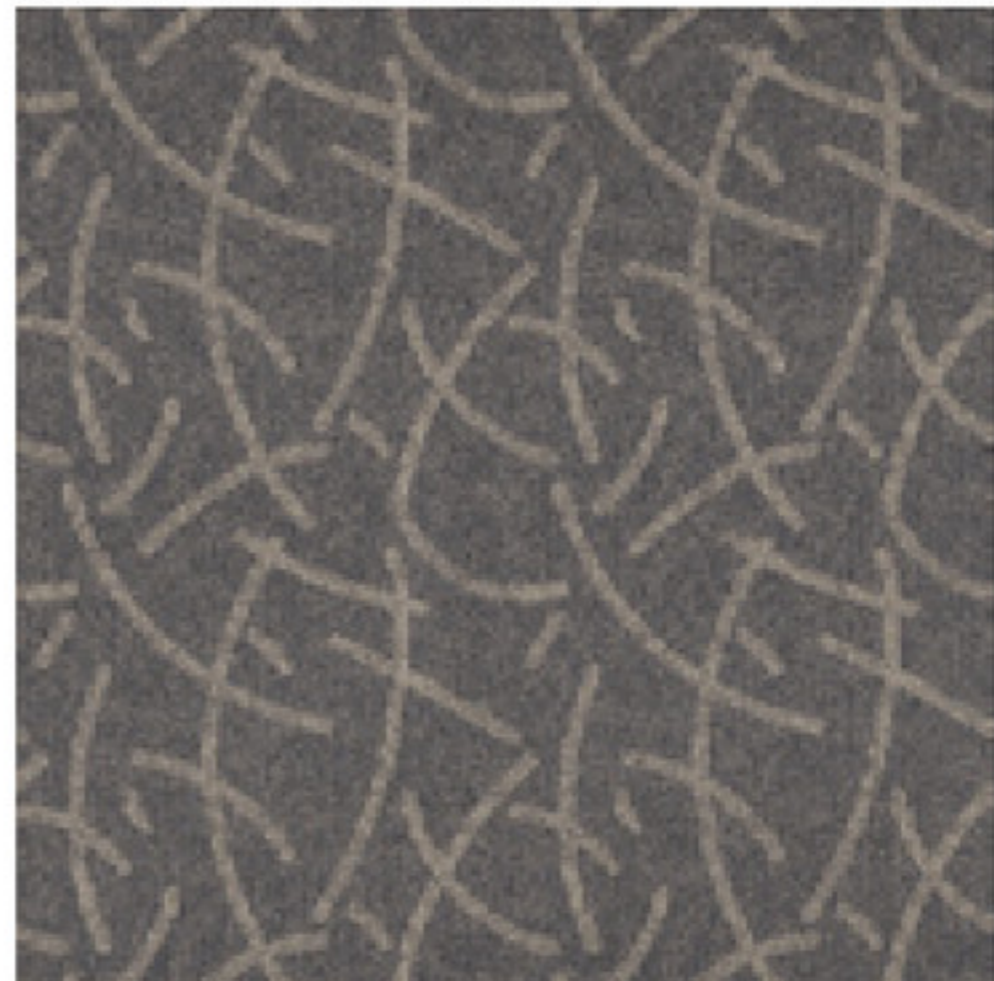
RFM52954226 Nairobi col. 5295



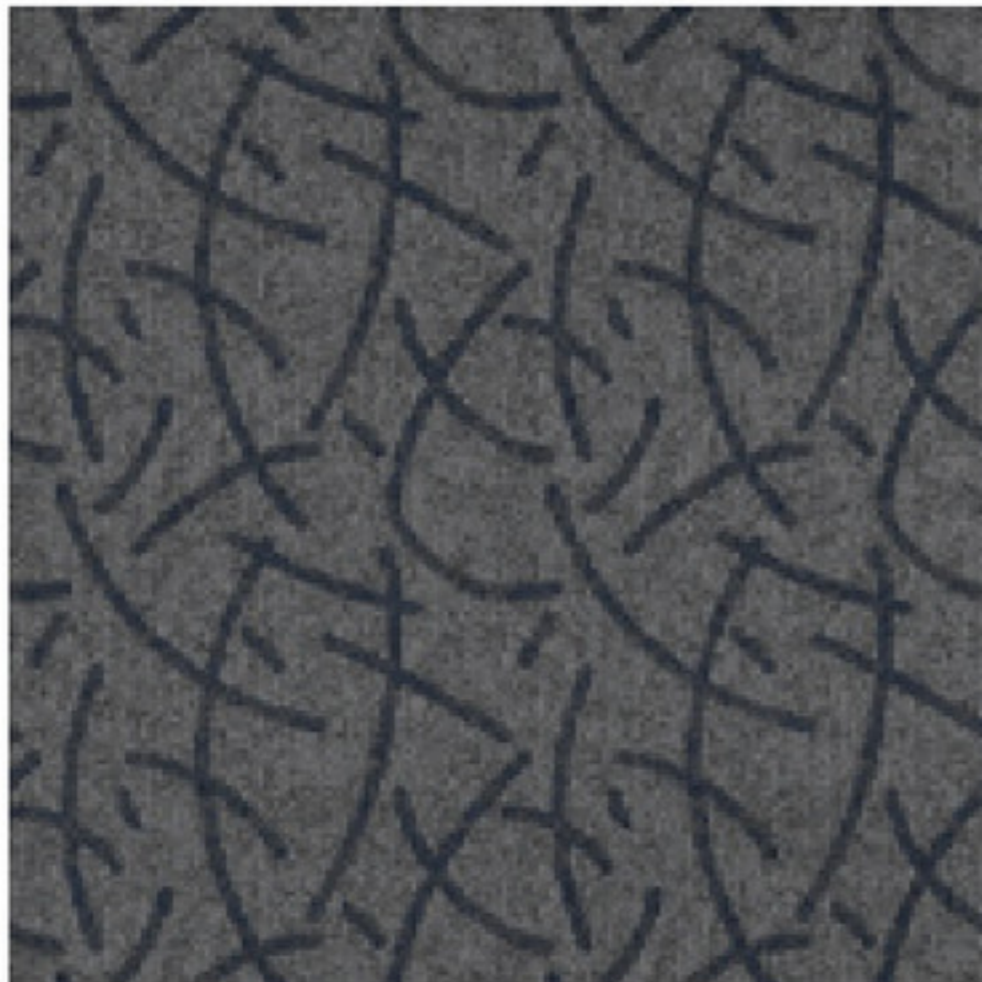
RFM52954222 Nairobi col. 5295



RFM52954223 Nairobi col. 5295



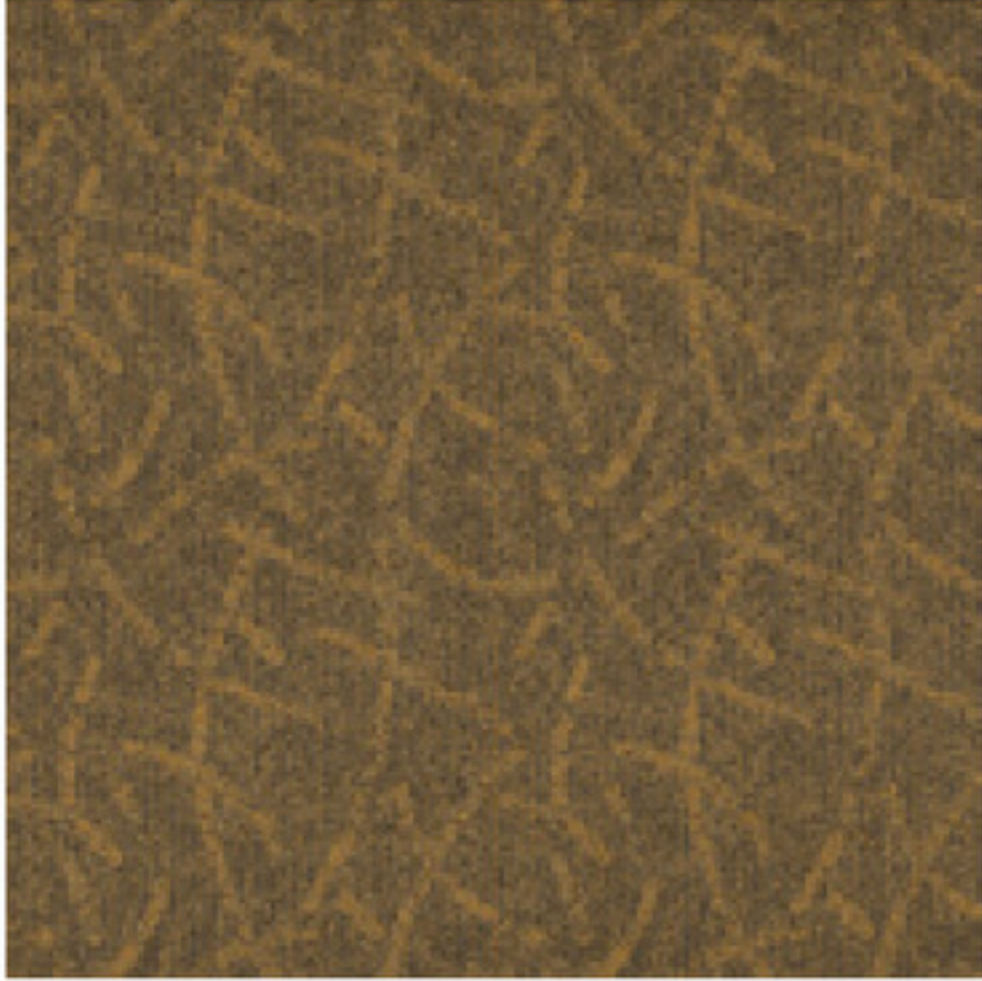
RFM52204220 Nairobi col. 5220



RFM52954225 Nairobi col. 5295

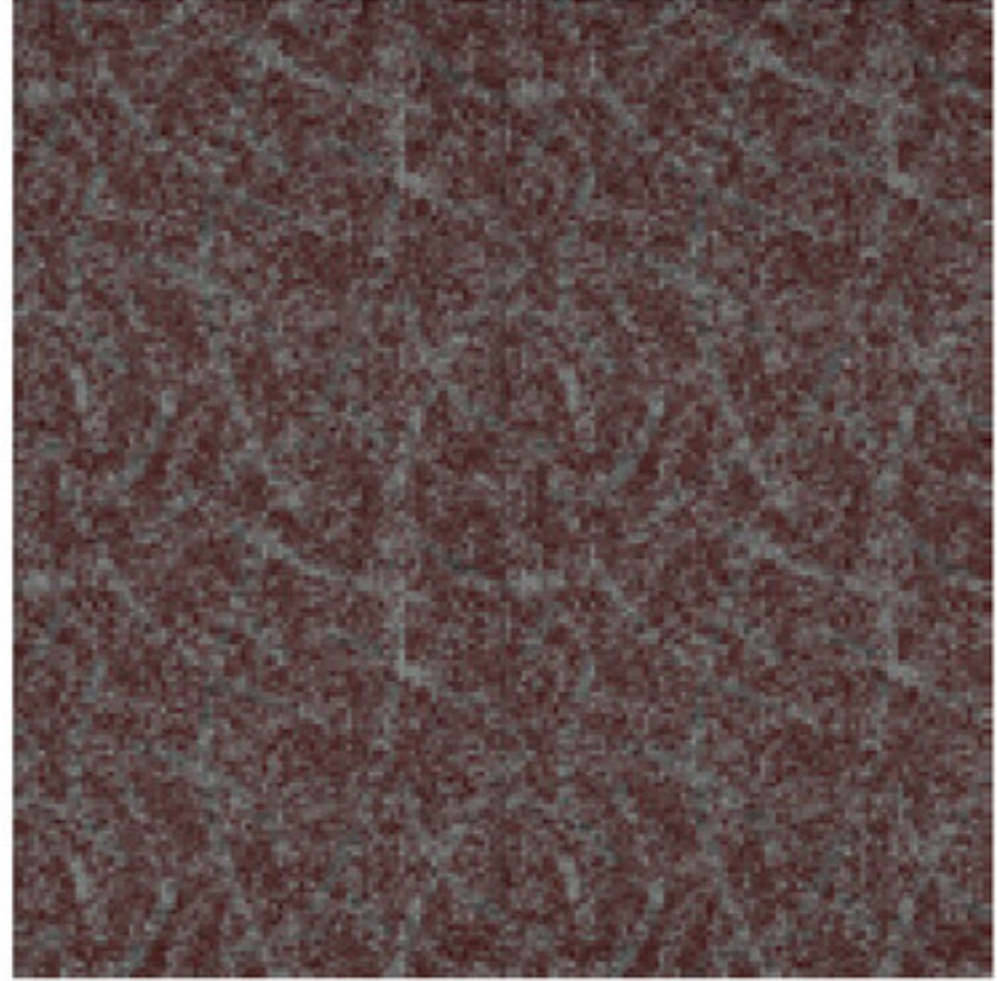


RFM52204222 Nairobi col. 5220

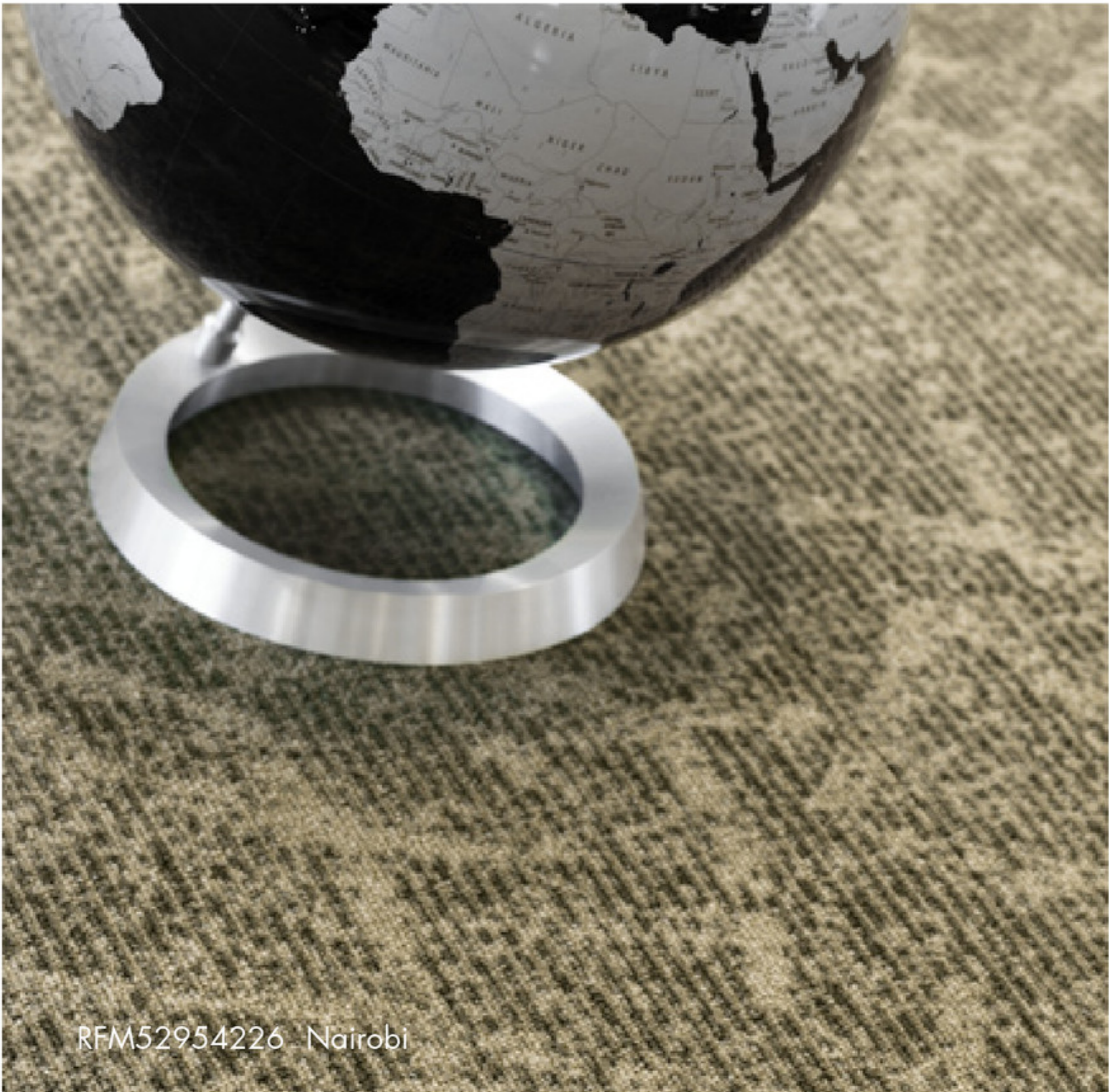


C1 C2 C3  
AC44 AC46 GB3

RFM52204223 Nairobi col. 5220



C1 C2 C3  
AC22 AC52 GB9  
AC53



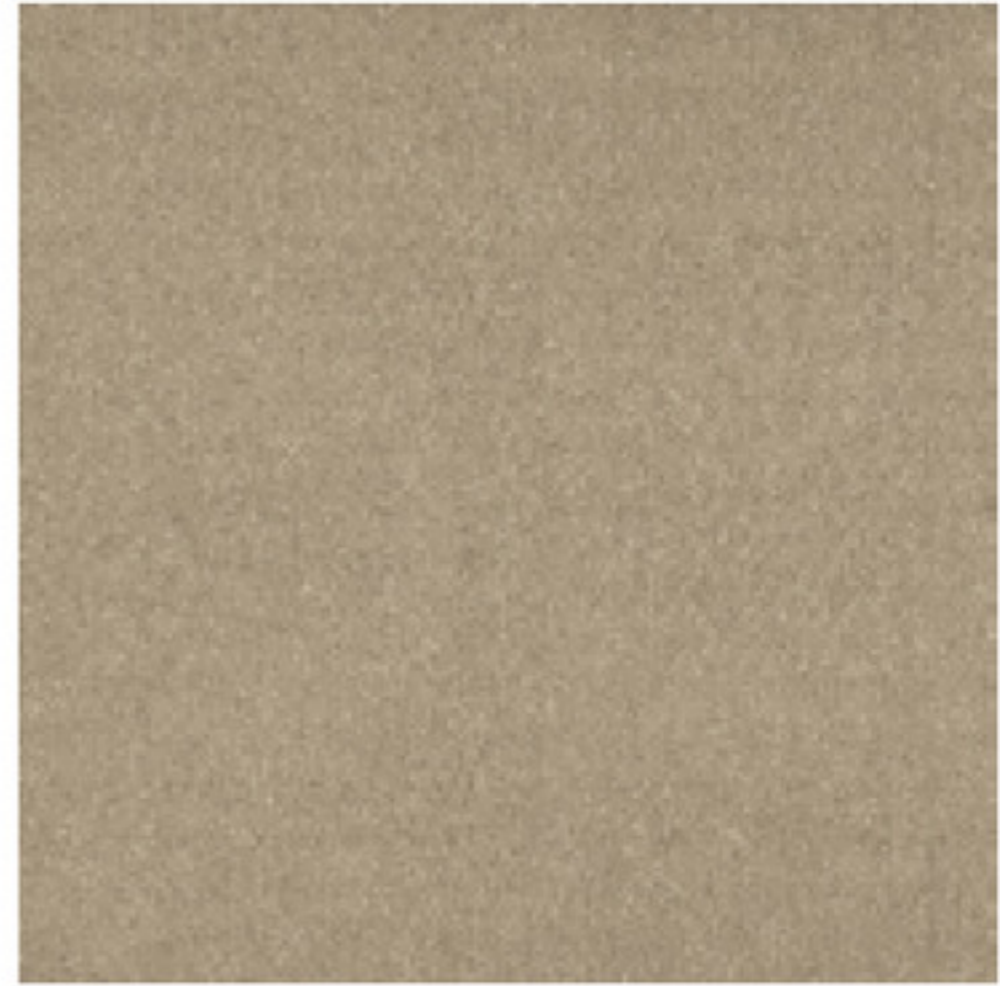
RFM52954226 Nairobi

RFM52954230 Helsinki col. 5295



C1 C2 C3  
GB1 AC28 AC27

RFM52754230 Helsinki col. 5275



C1 C2 C3  
GB2 GB1 GB3

RFM52854230 Helsinki col. 5285



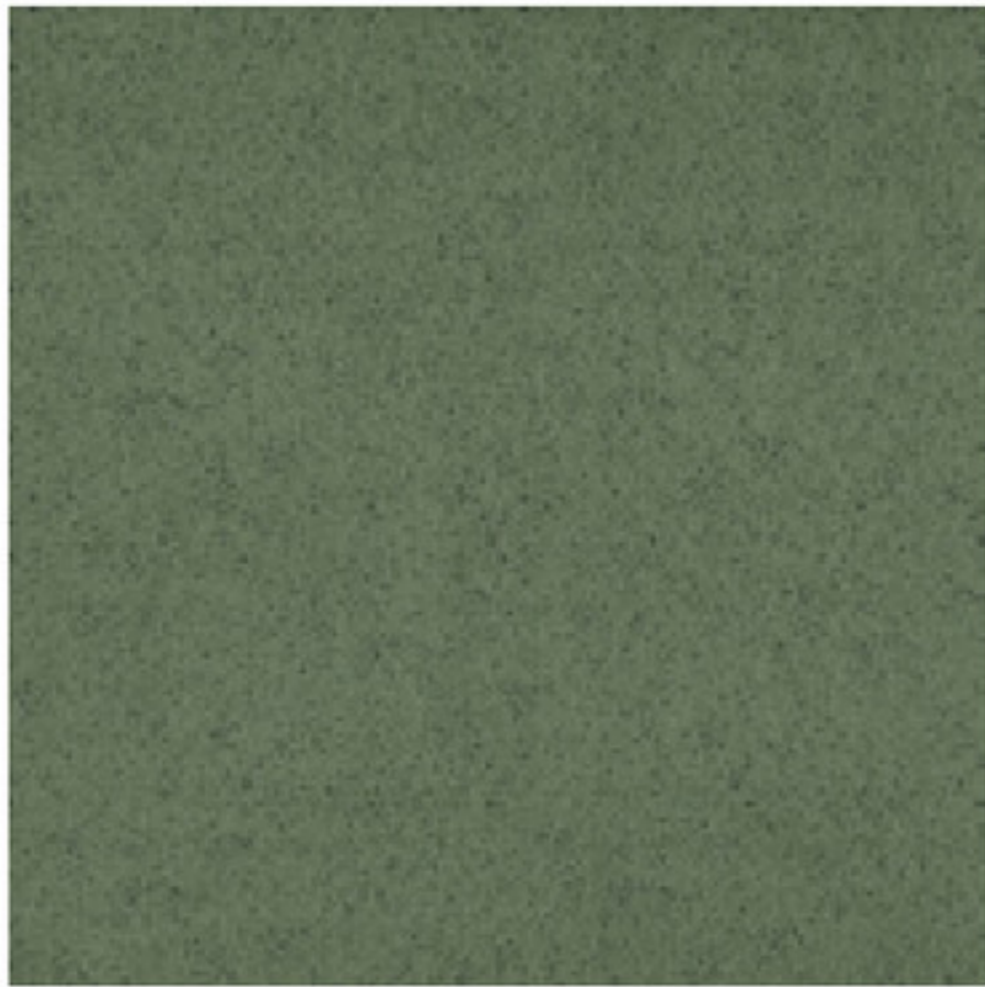
C1 C2 C3  
GB2 AC14 AC15

RFM52854231 Helsinki col. 5285



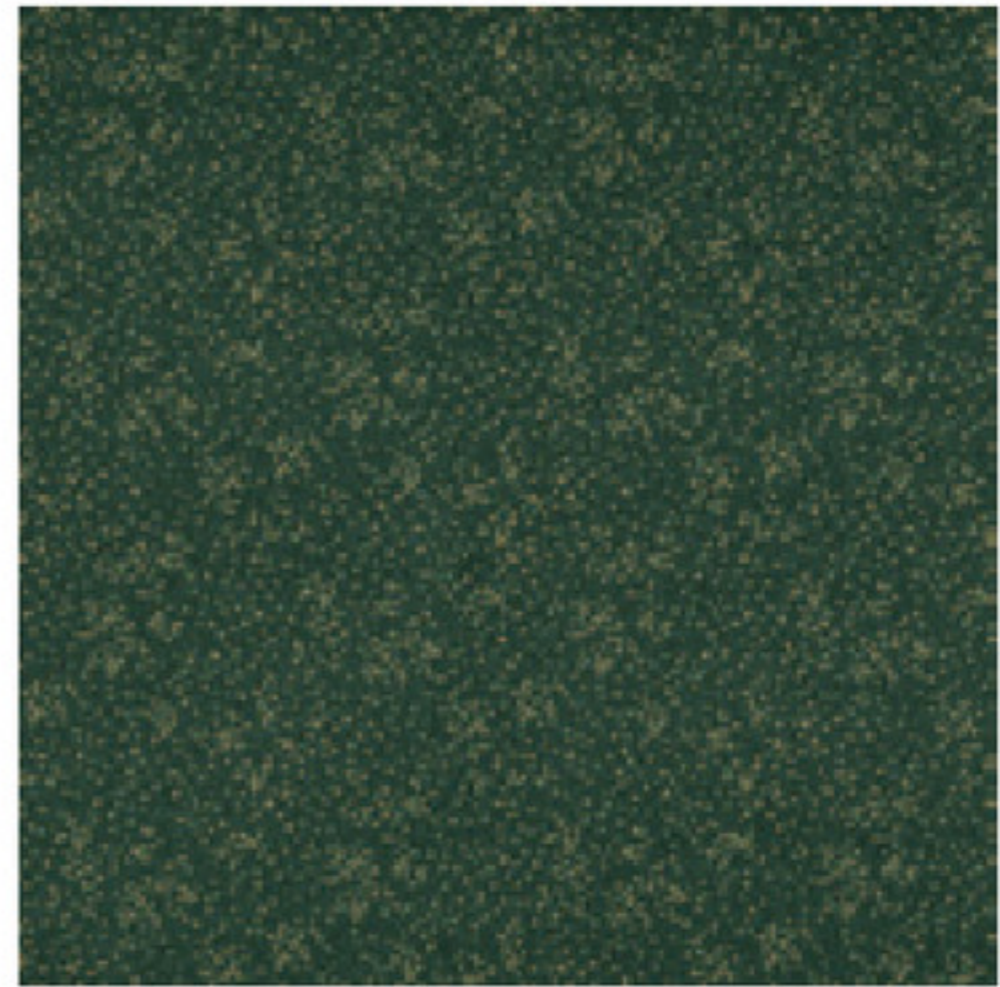
C1 C2 C3  
GB5 AC17 AC44

RFM52854232 Helsinki col. 5285



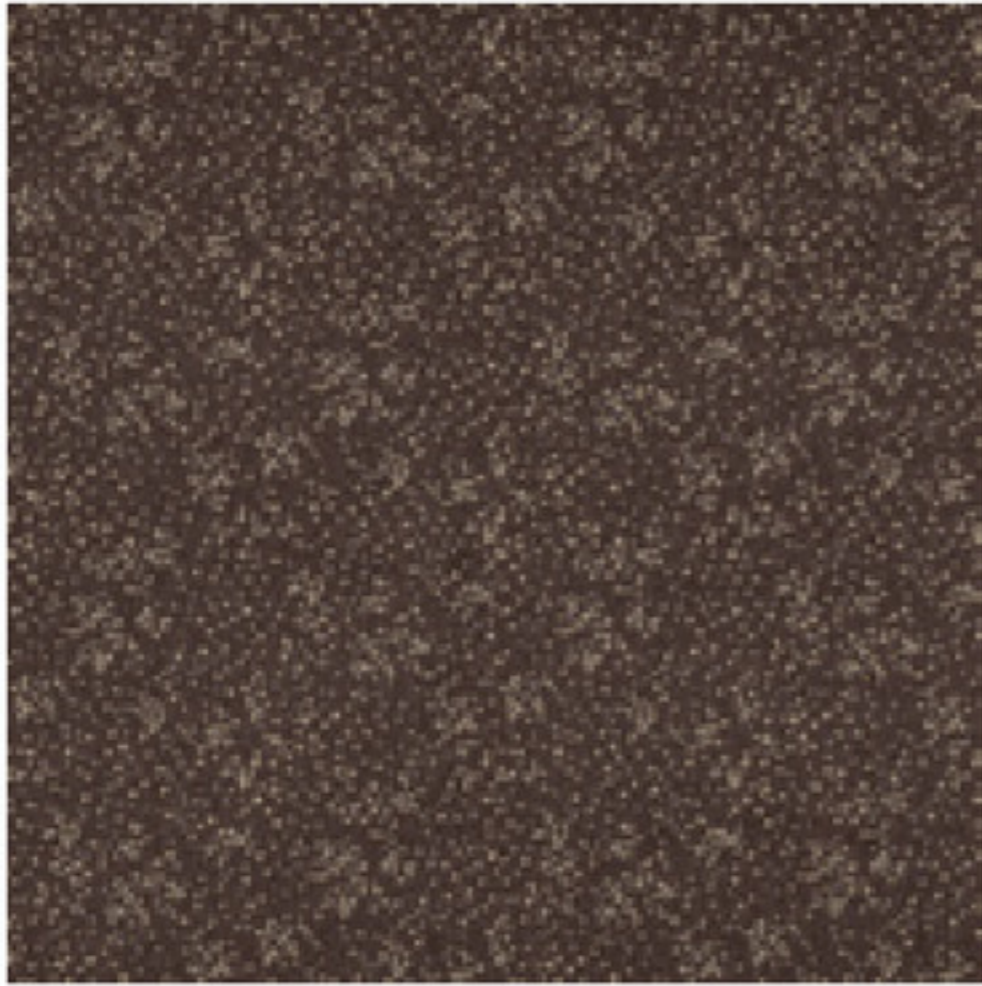
C1 C2 C3  
GB8 AC31 AC34

RFM52204230 Helsinki col. 5220



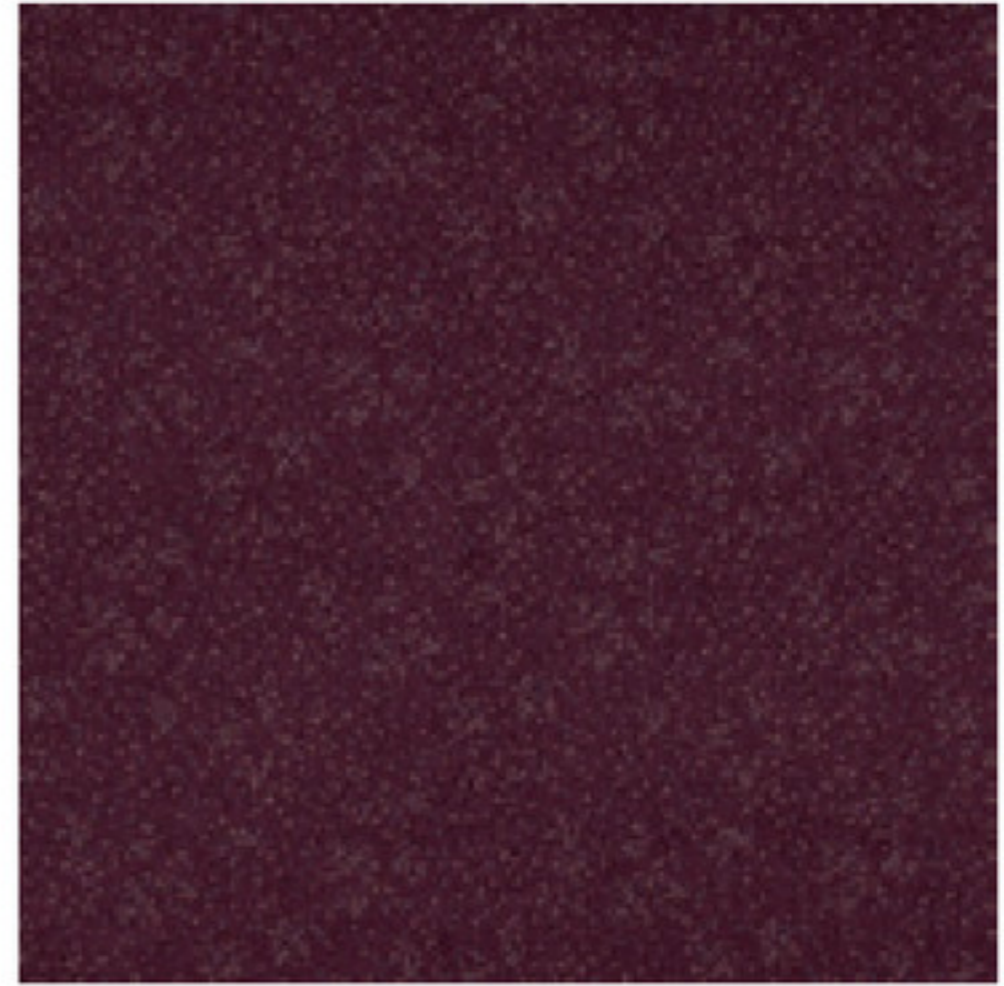
C1 C2 C3  
GB7 AC56 AC60

RFM52754231 Helsinki col. 5275



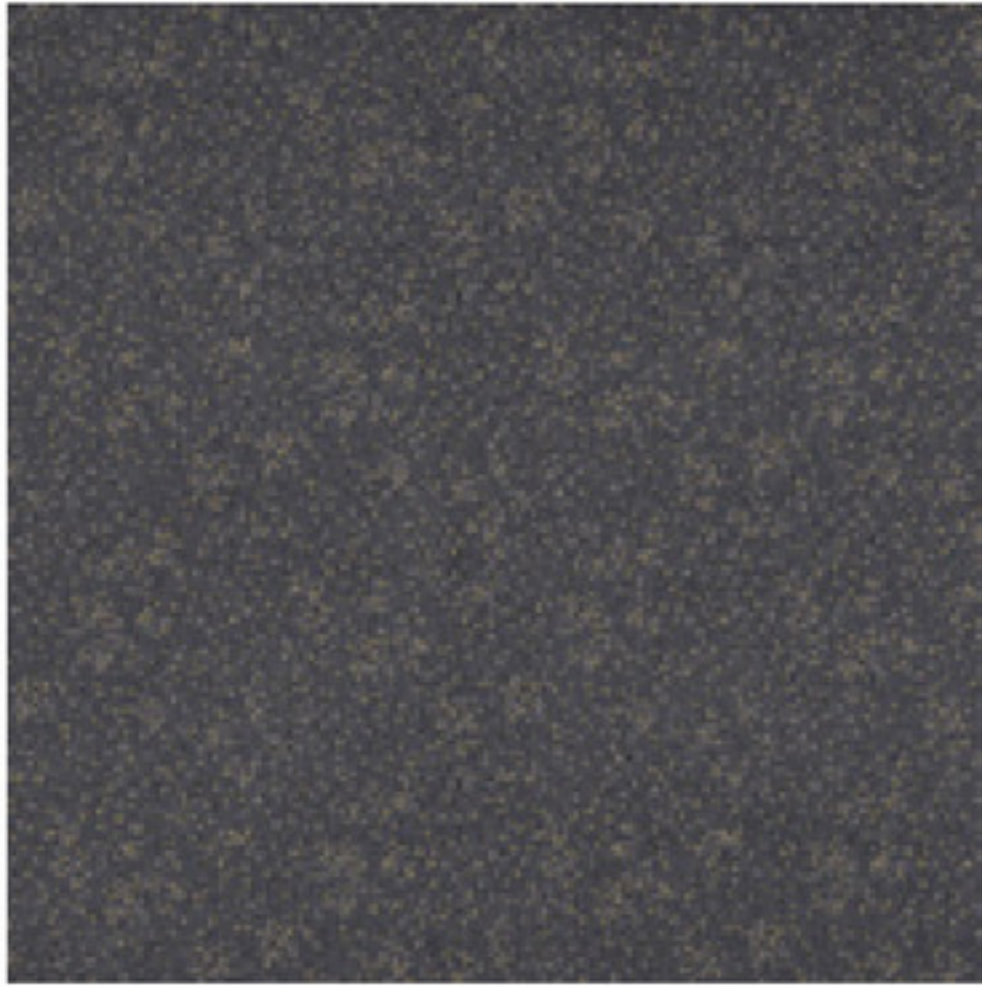
C1 C2 C3  
GB4 GB2 GB3

RFM52754232 Helsinki col. 5275



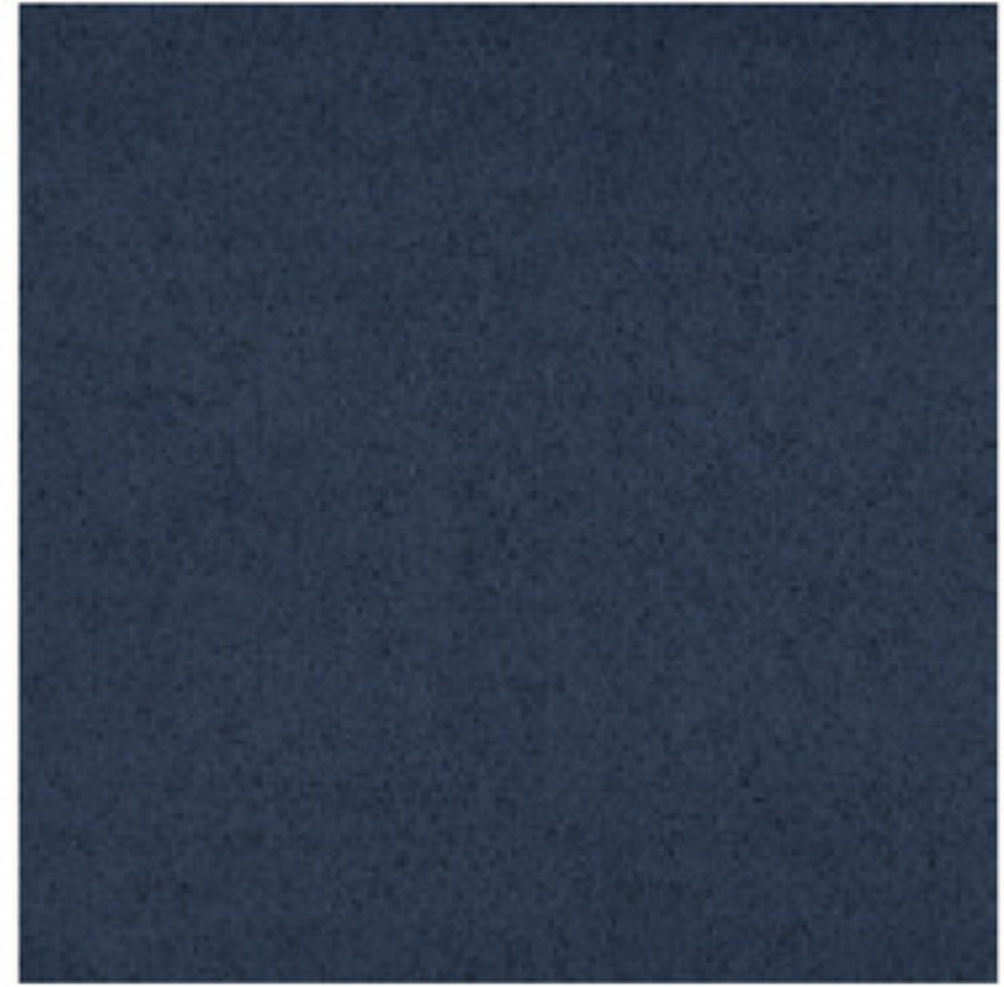
C1 C2 C3  
GB12 AC33 AC36

RFM52954231 Helsinki col. 5295



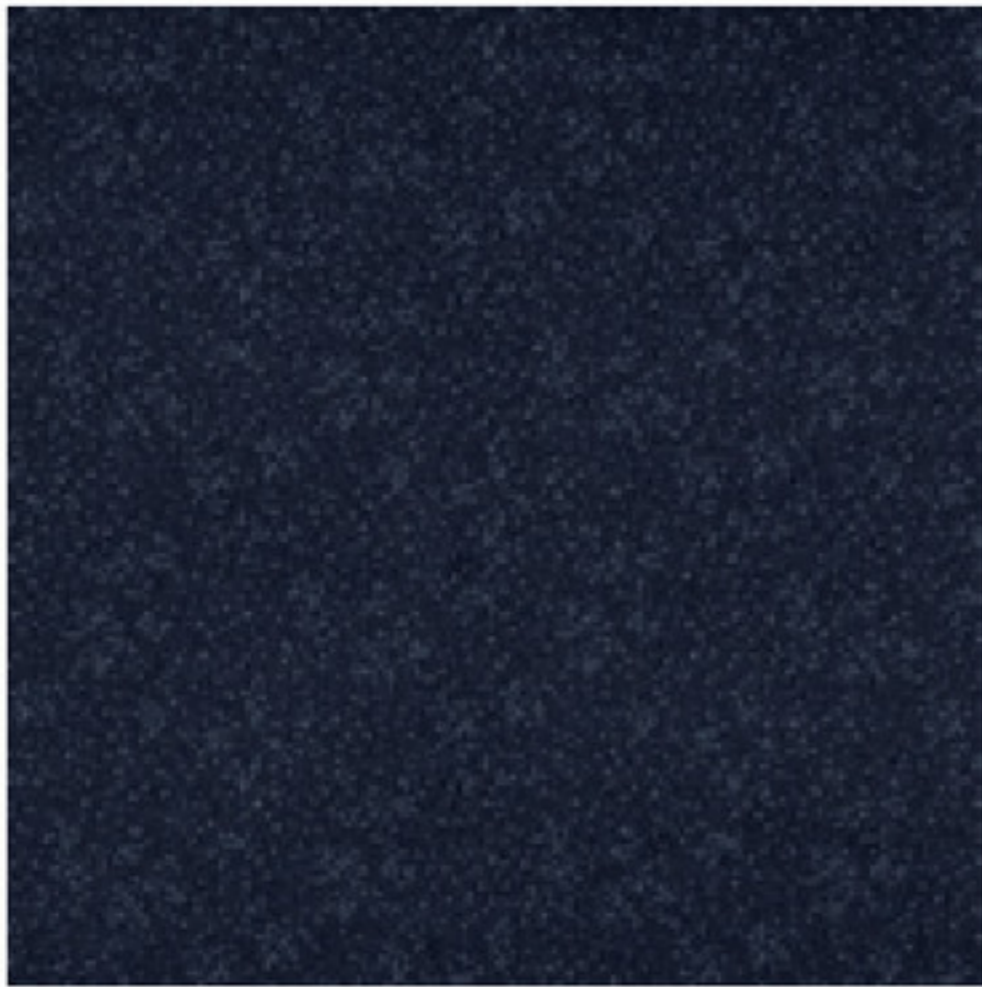
C1 C2 C3  
GB3 GB2 AC25

RFM52954232 Helsinki col. 5295



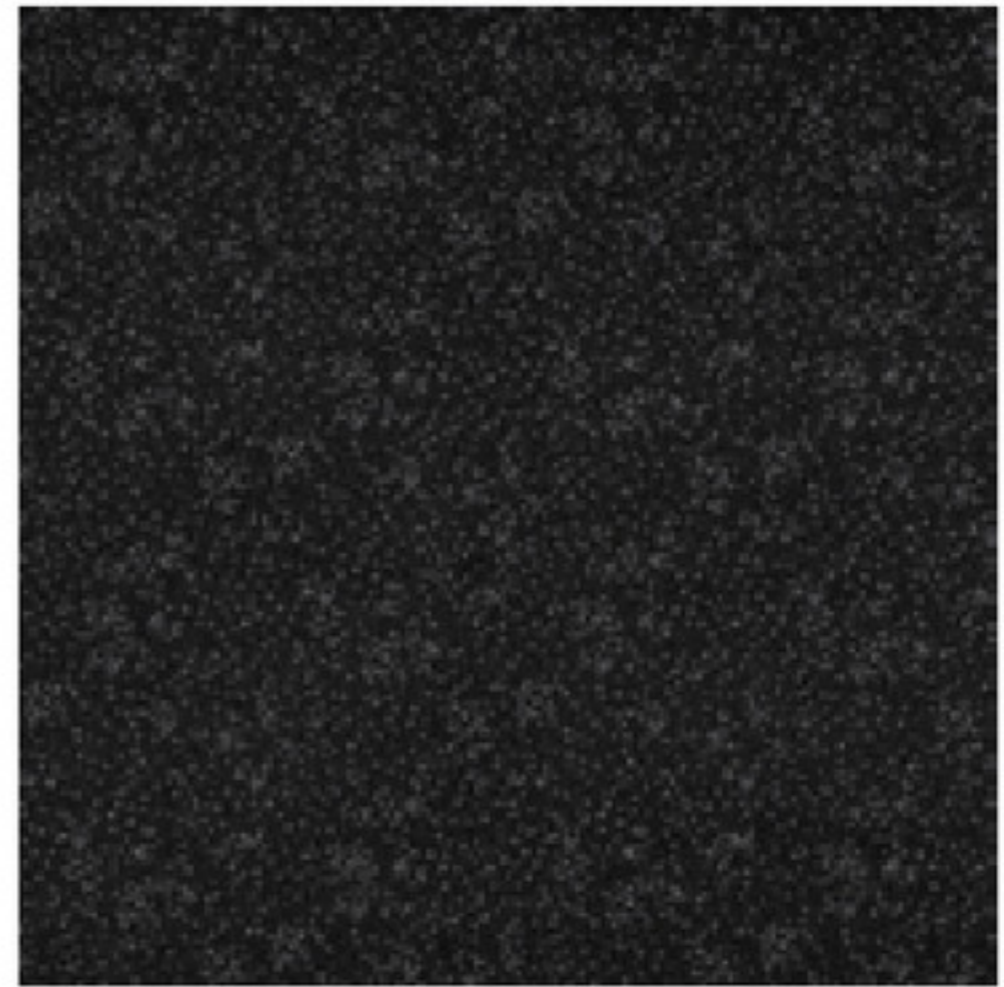
C1 C2 C3  
GB6 AC21 AC17

RFM52954233 Helsinki col. 5295



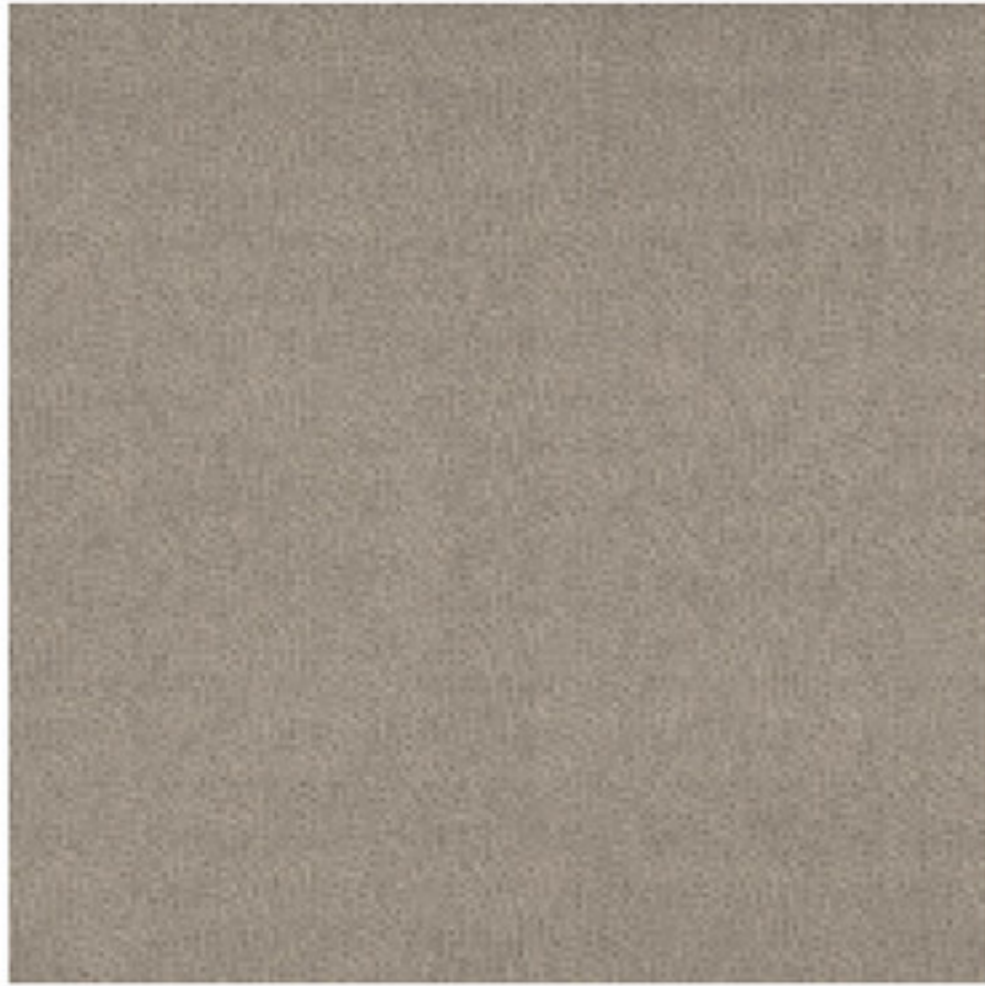
C1 C2 C3  
GB5 AC18 AC19

RFM52954234 Helsinki col. 5295



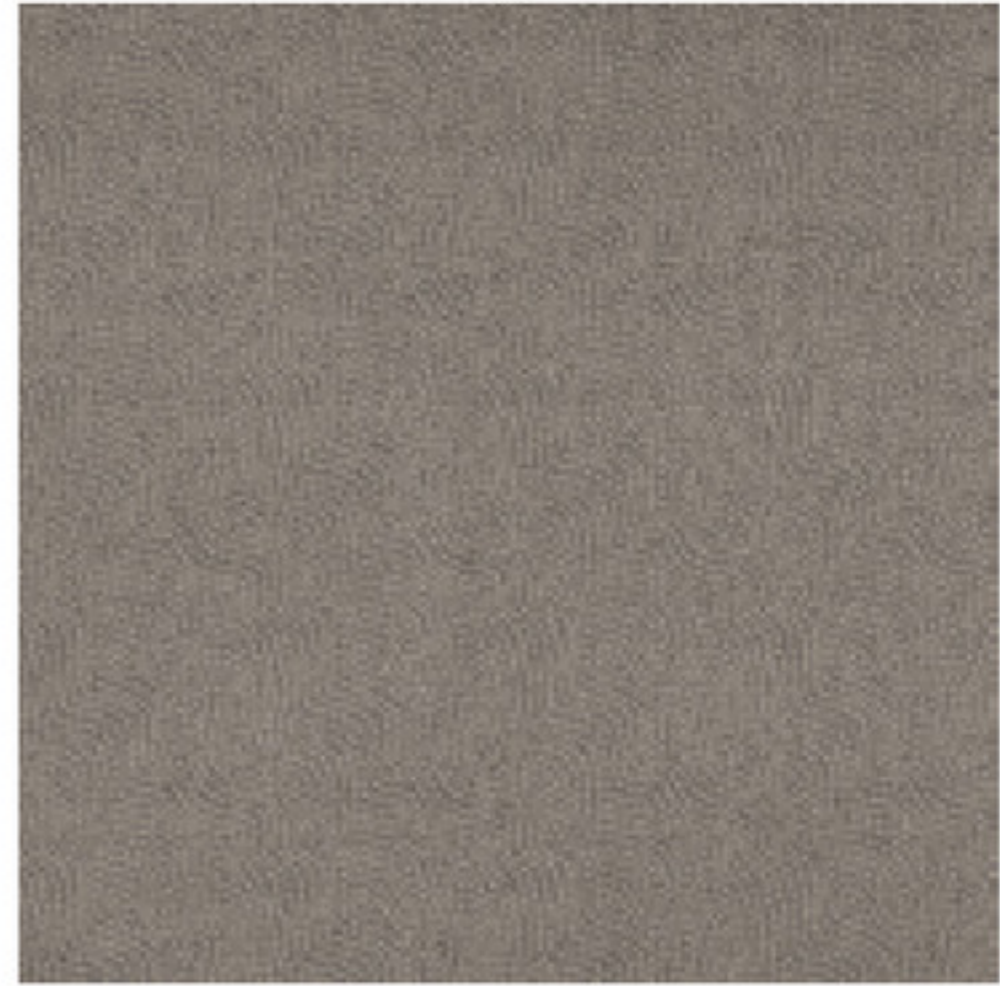
C1 C2 C3  
GB4 GB3 AC46

RFM52954240 Song Lines col. 5295



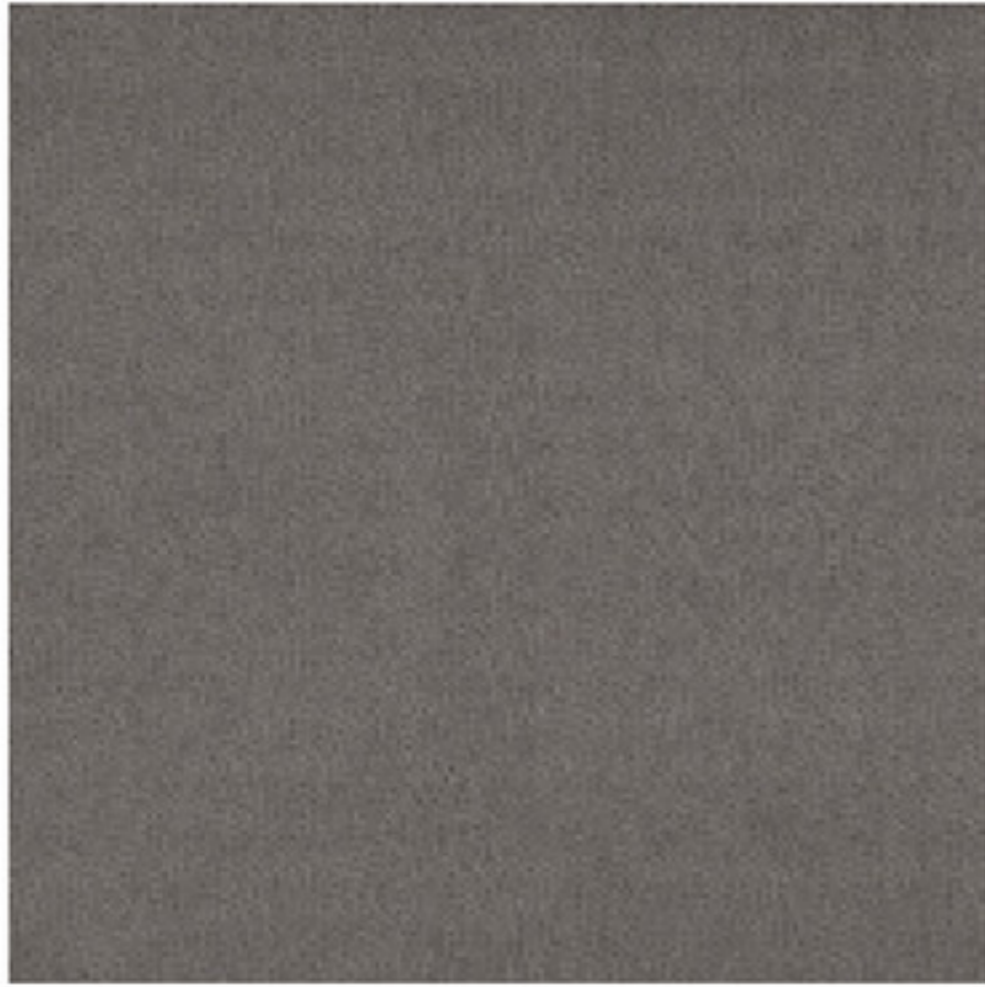
C1 C2  
GB1 GB2

RFM52954241 Song Lines col. 5295



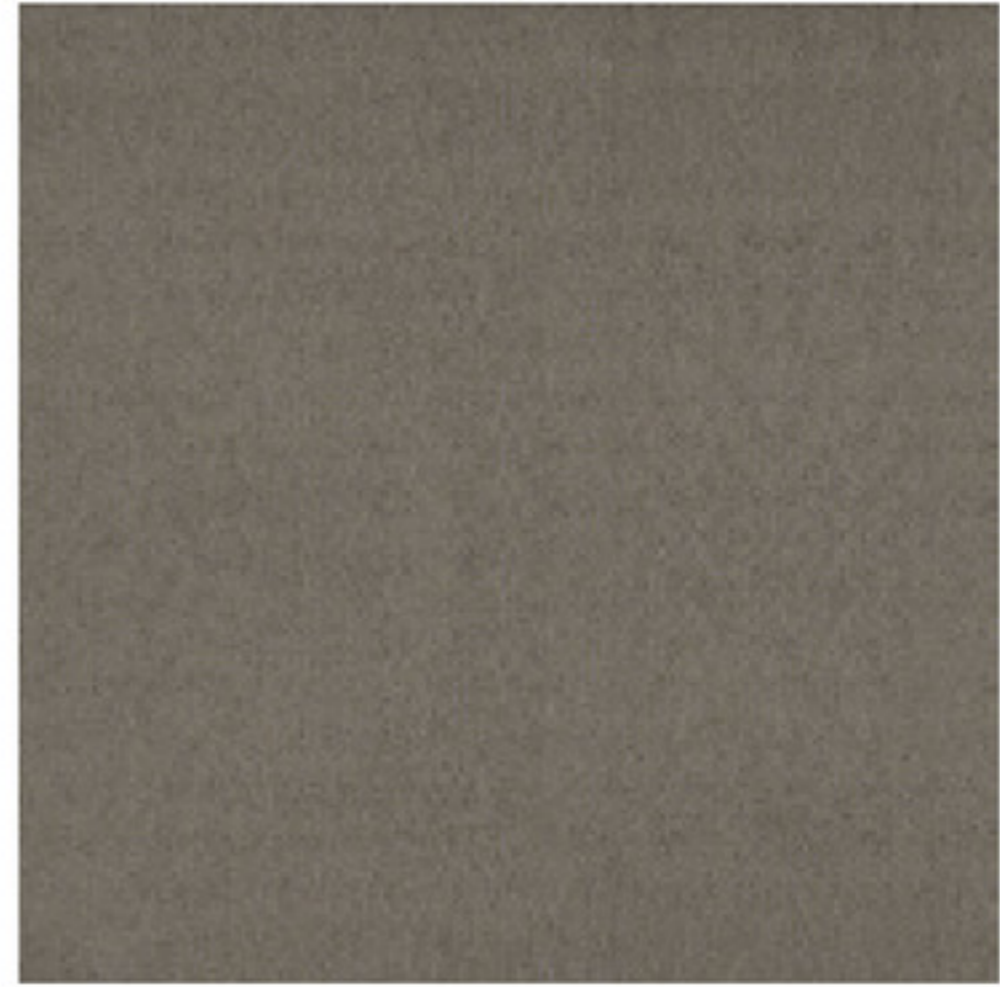
C1 C2  
GB2 GB1

RFM52954242 Song Lines col. 5295



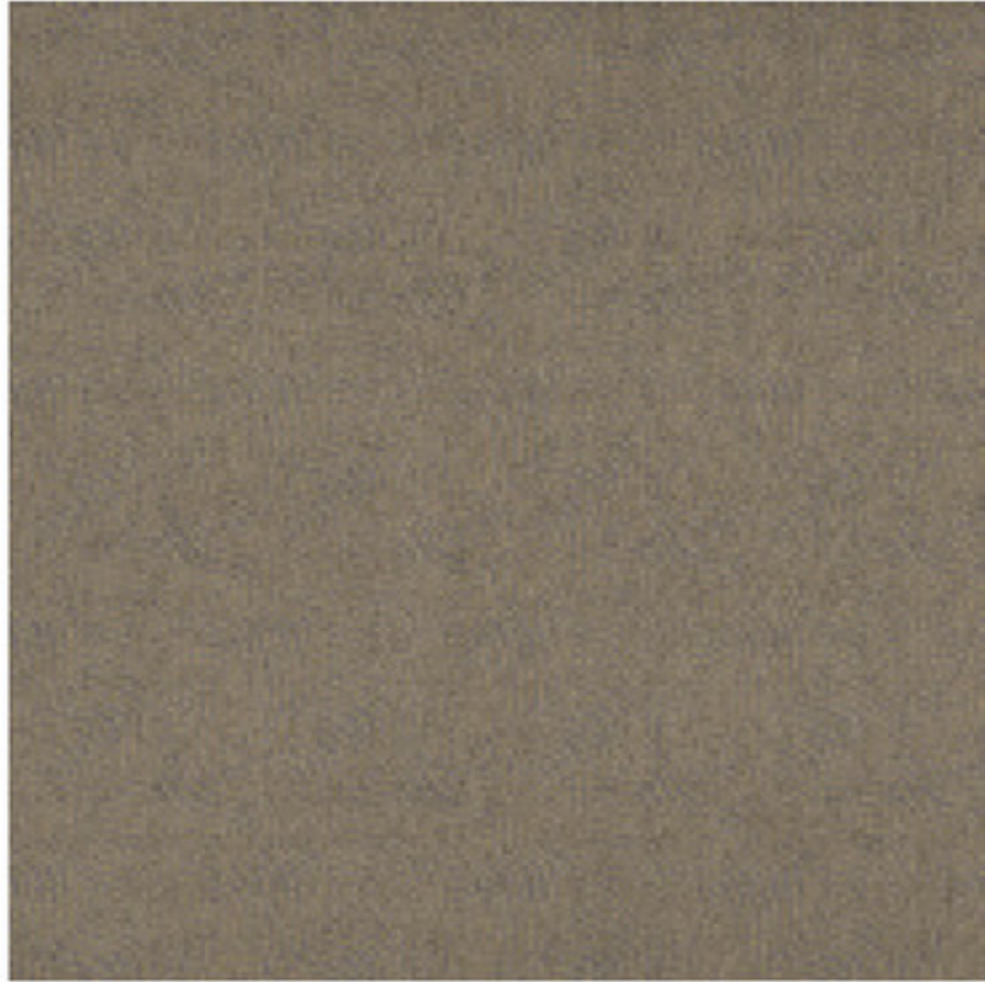
C1 C2  
GB2 GB3

RFM52954243 Song Lines col. 5295



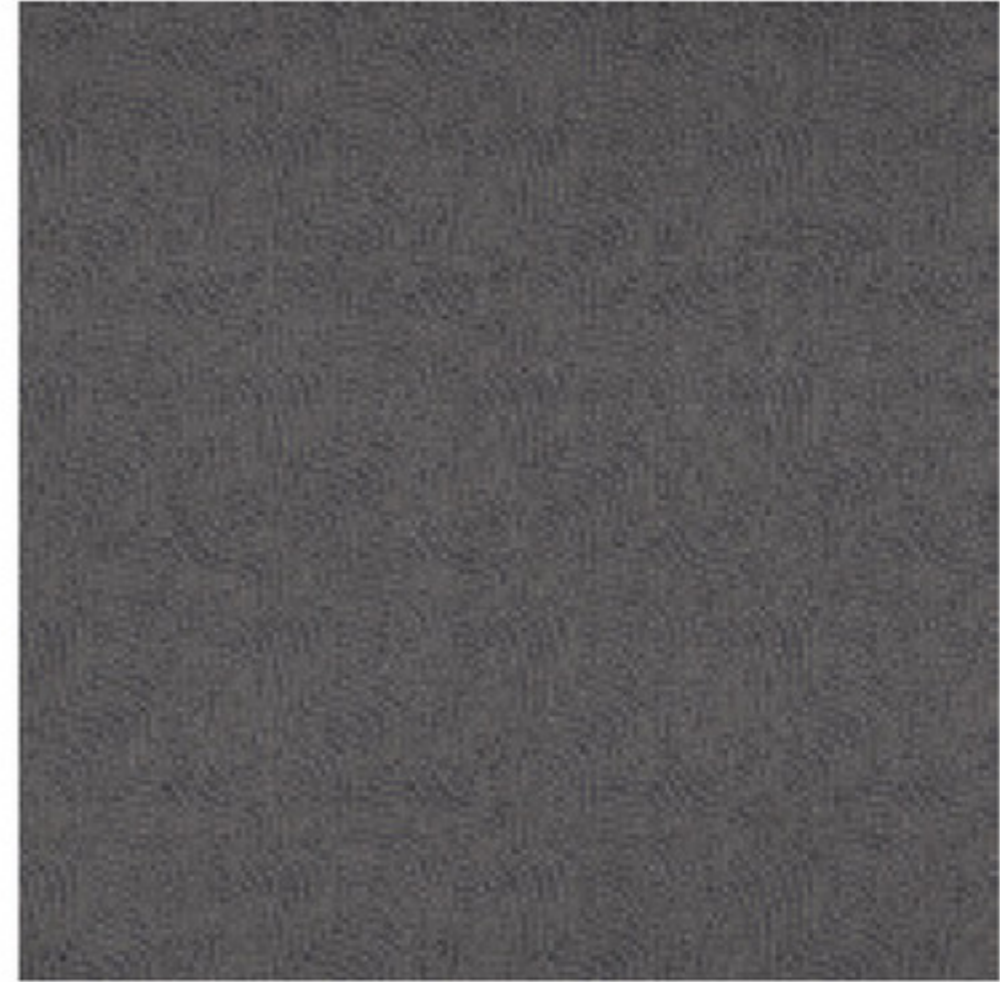
C1 C2  
GB2 GB8

RFM52954244 Song Lines col. 5295



C1 C2  
GB2 GB9

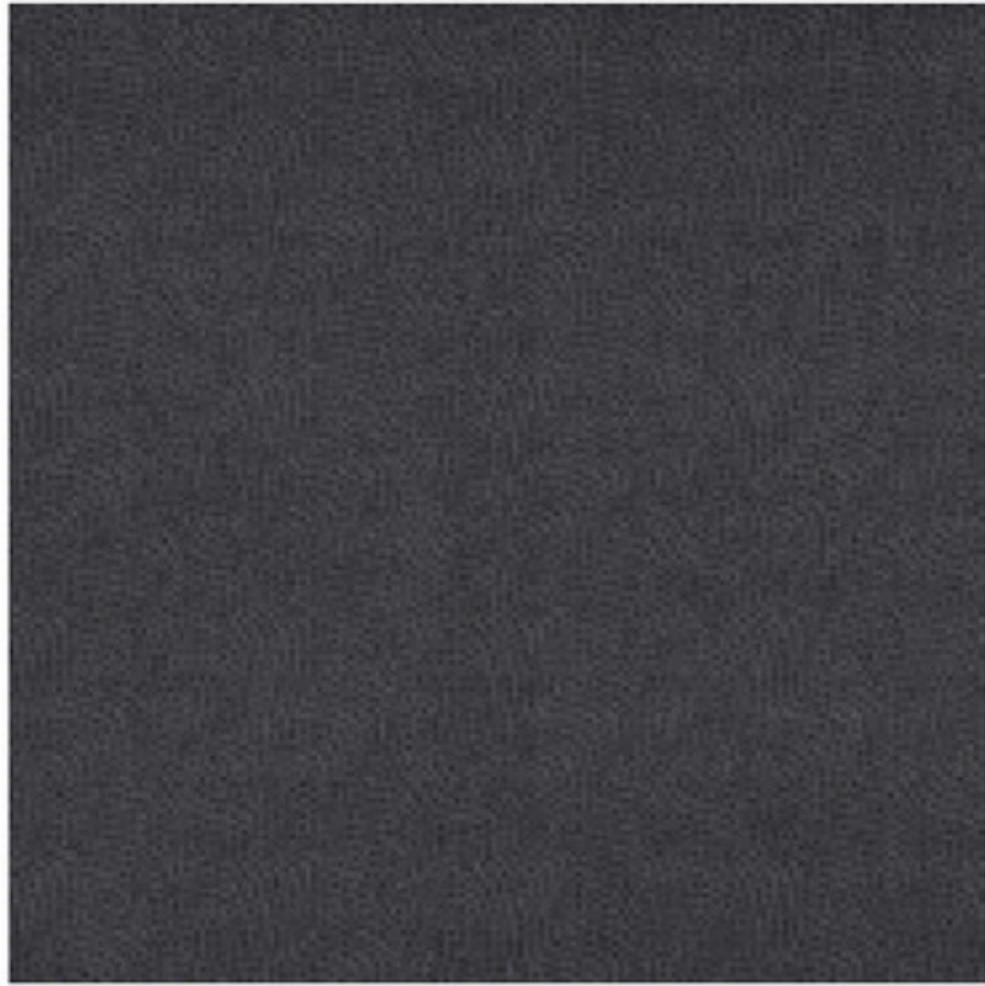
RFM52954245 Song Lines col. 5295



C1 C2  
GB3 GB2

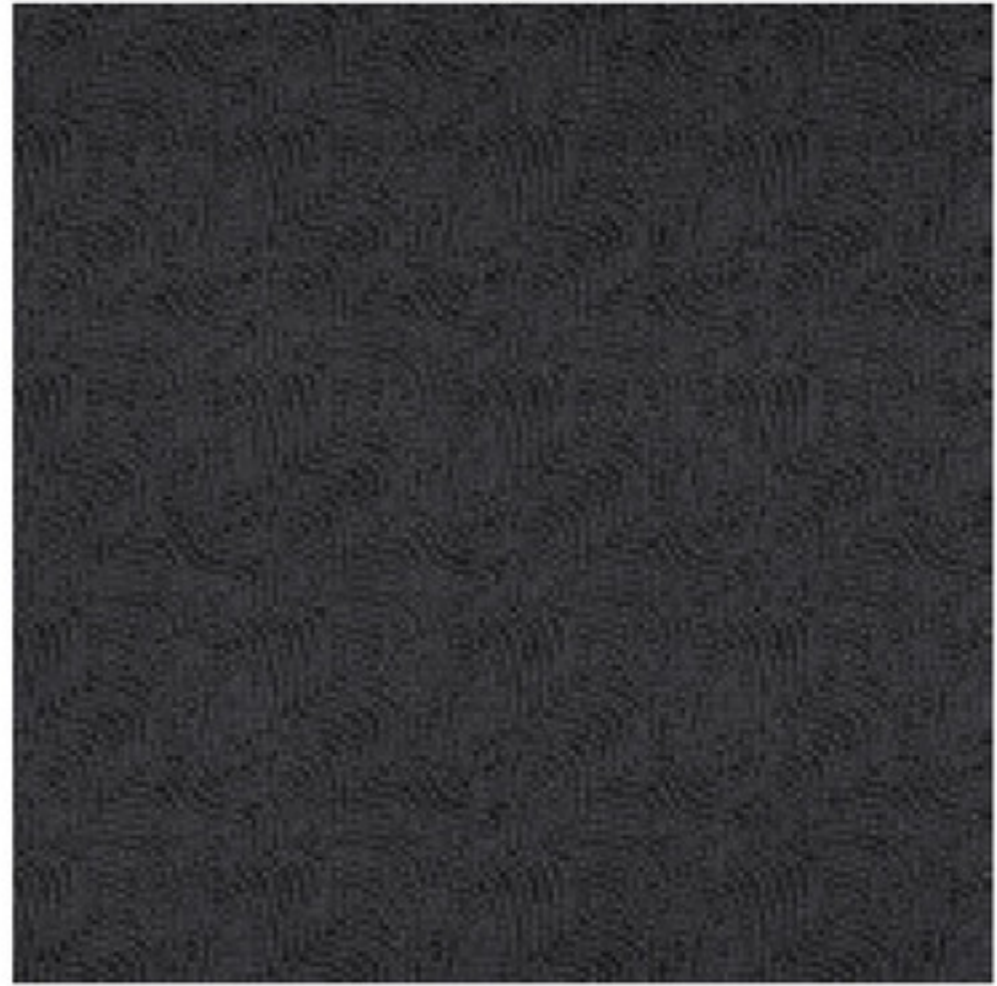


RFM52954246 Song Lines col. 5295



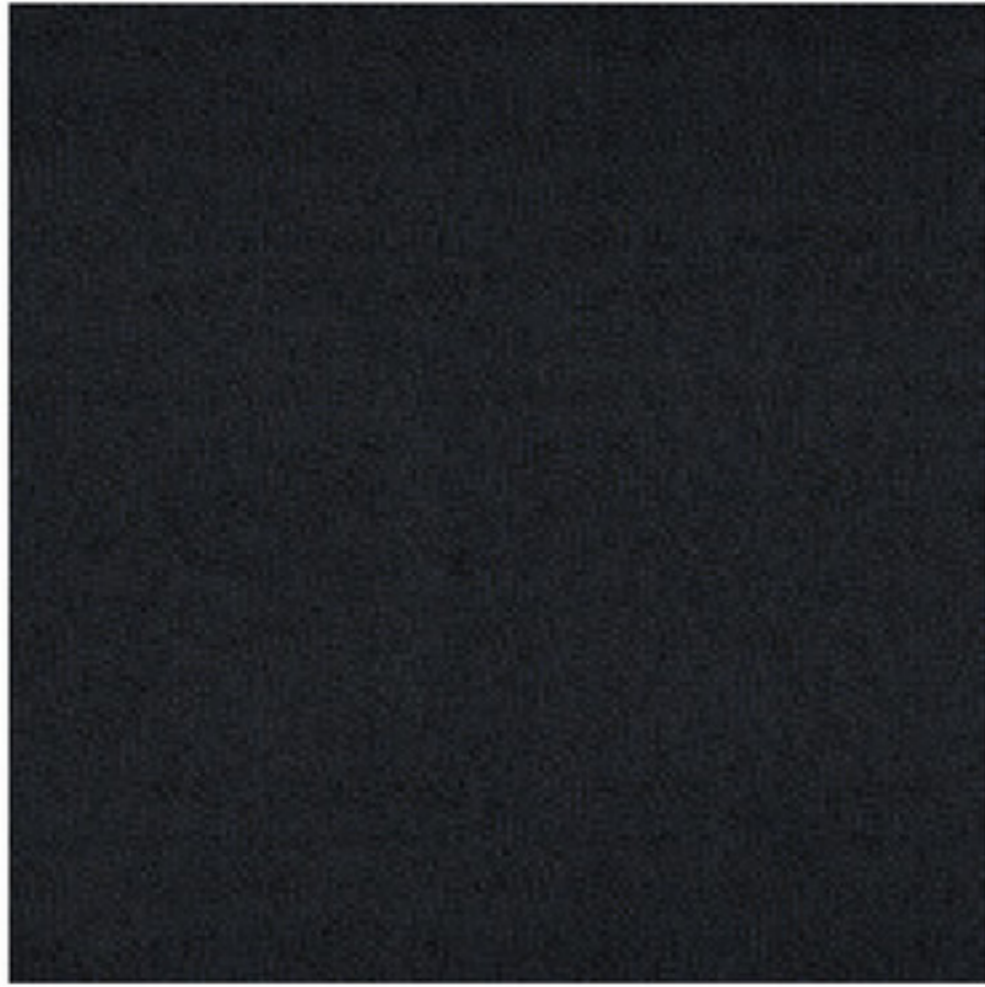
C1 C2  
GB3 GB4

RFM52954247 Song Lines col. 5295



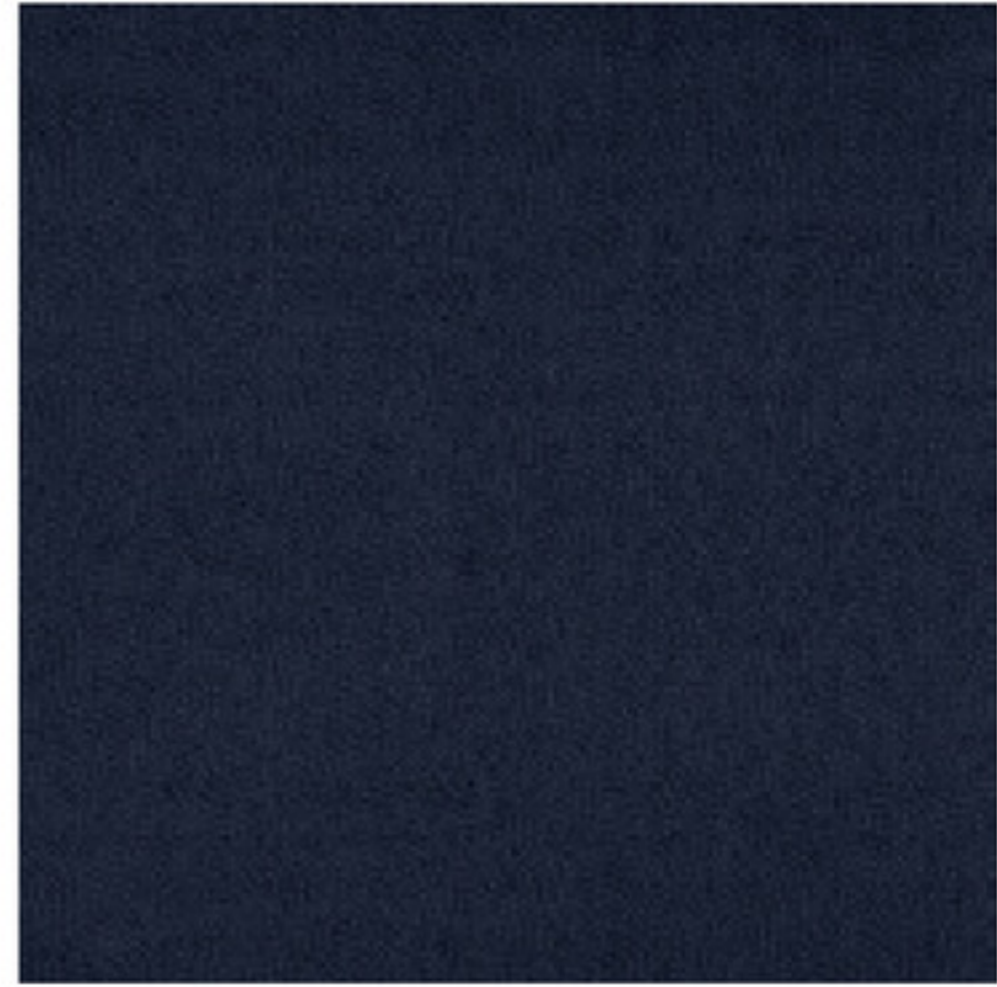
C1 C2  
GB4 GB3

RFM52954248 Song Lines col. 5295



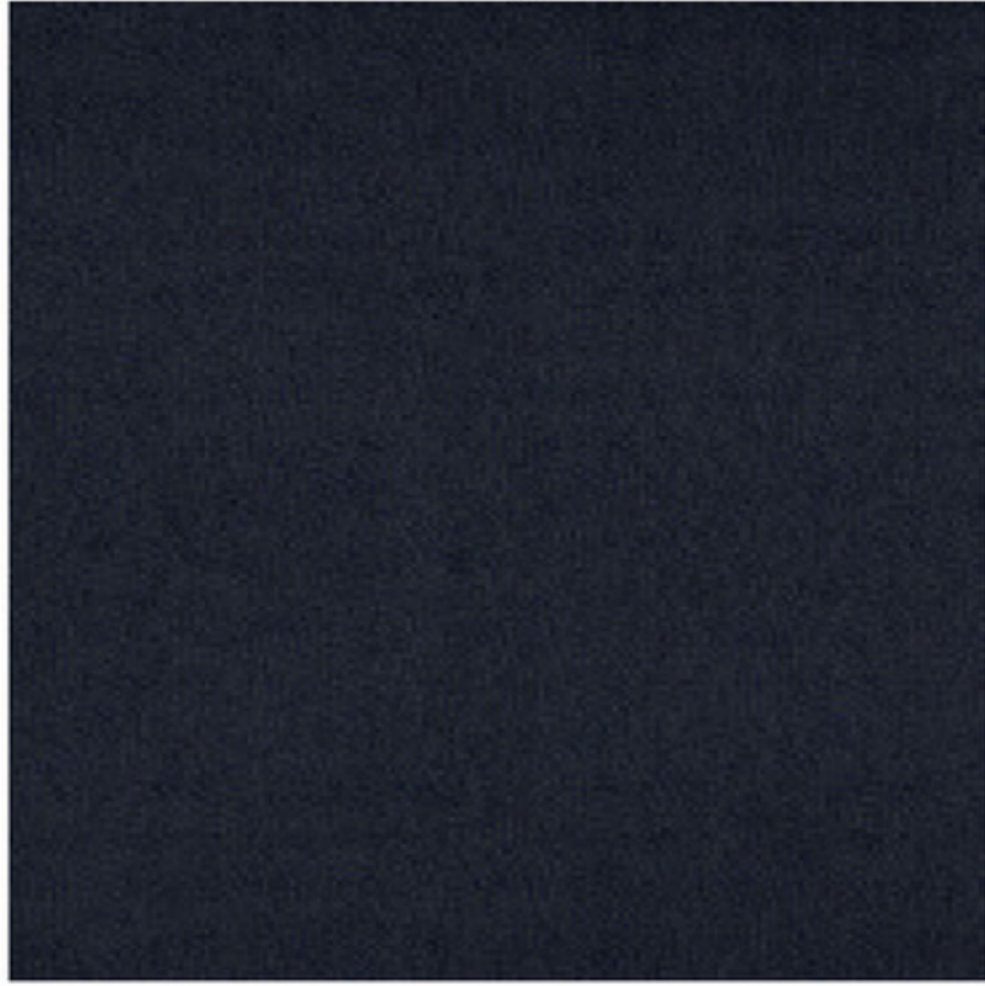
C1 C2  
GB4 GB6

RFM52954249 Song Lines col. 5295



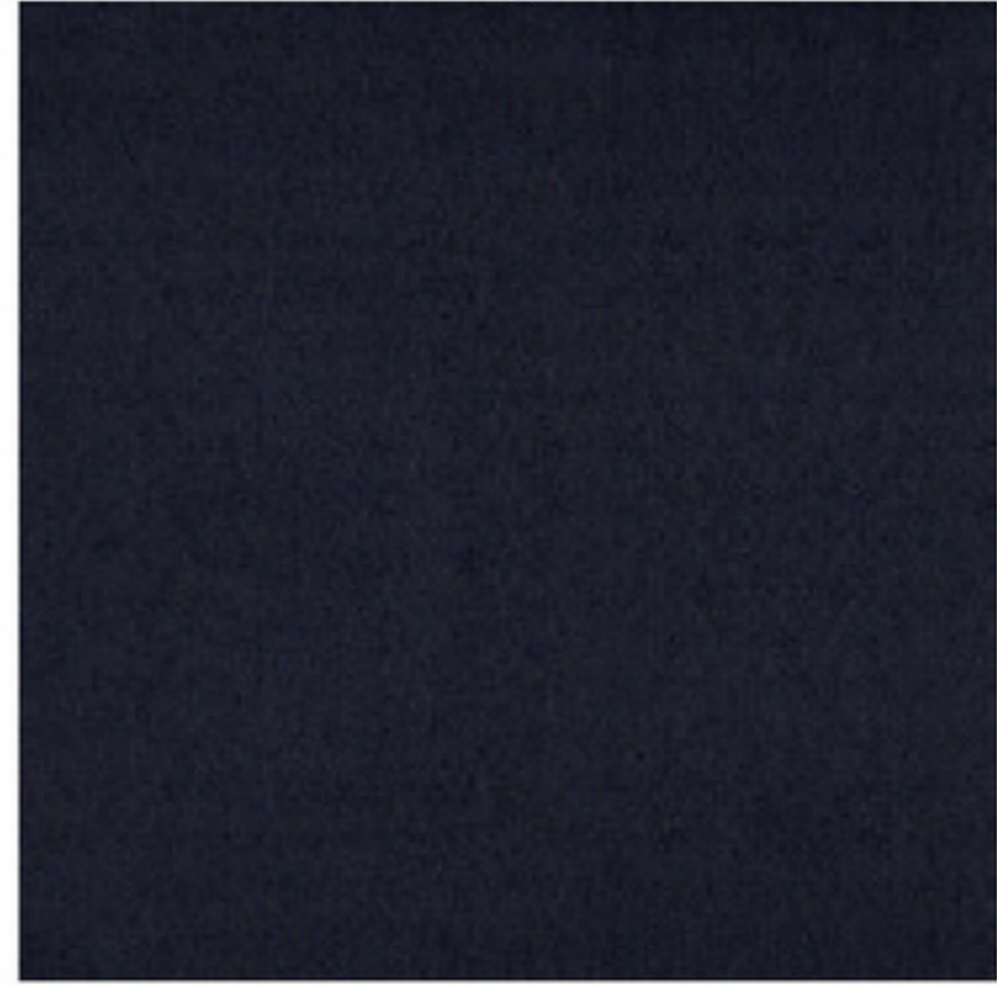
C1 C2  
GB5 GB6

RFM52954250 Song Lines col. 5295



C1 C2  
GB5 GB7

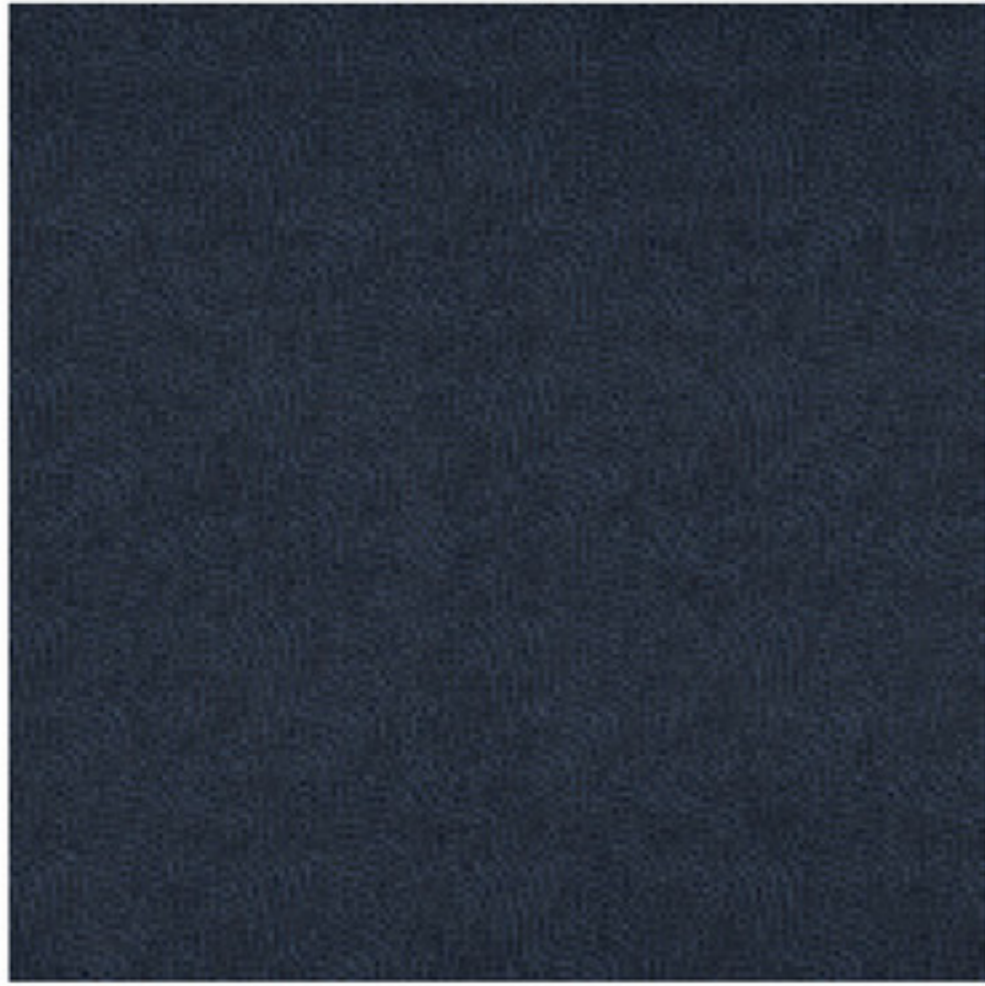
RFM52954251 Song Lines col. 5295



C1 C2  
GB5 GB12



RFM52954252 Song Lines col. 5295



C1 C2  
GB6 GB4

RFM52954253 Song Lines col. 5295



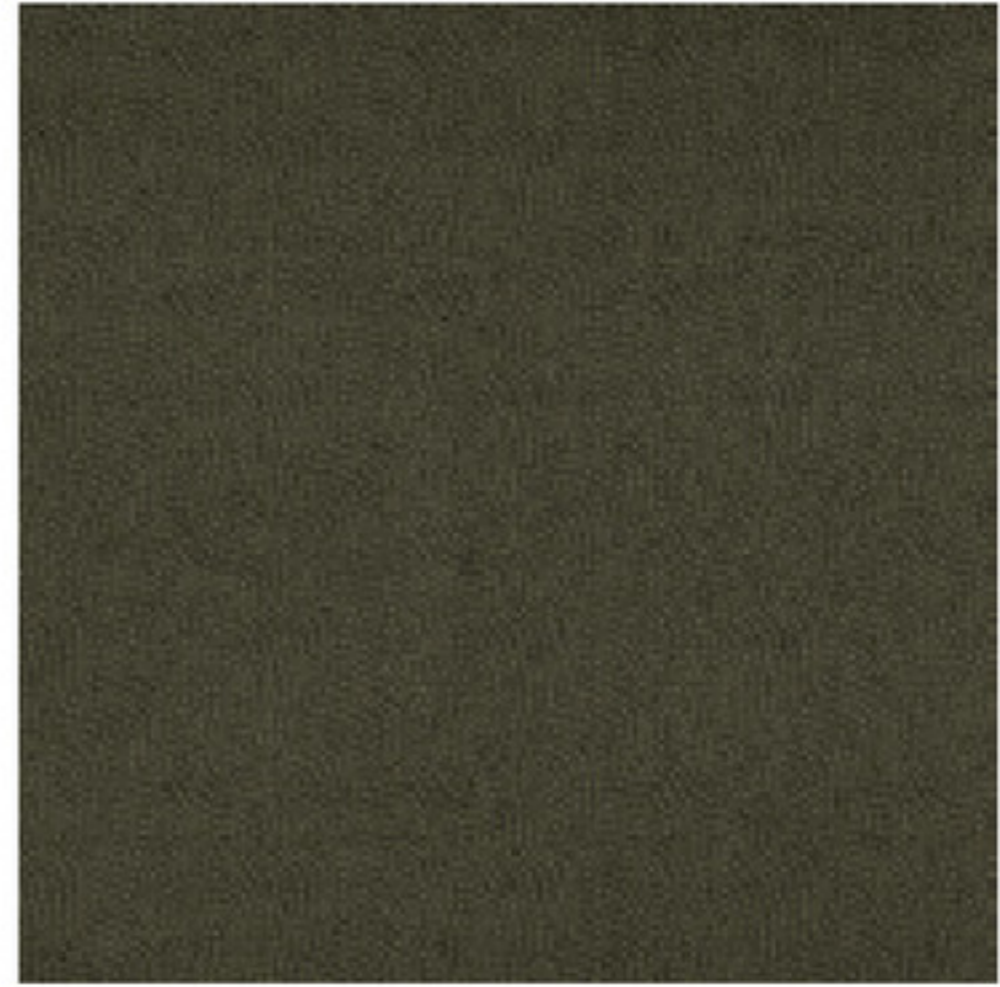
C1 C2  
GB6 GB5

RFM52954254 Song Lines col. 5295



C1 C2  
GB7 GB4

RFM52954255 Song Lines col. 5295



C1 C2  
GB7 GB8

RFM52954256 Song Lines col. 5295



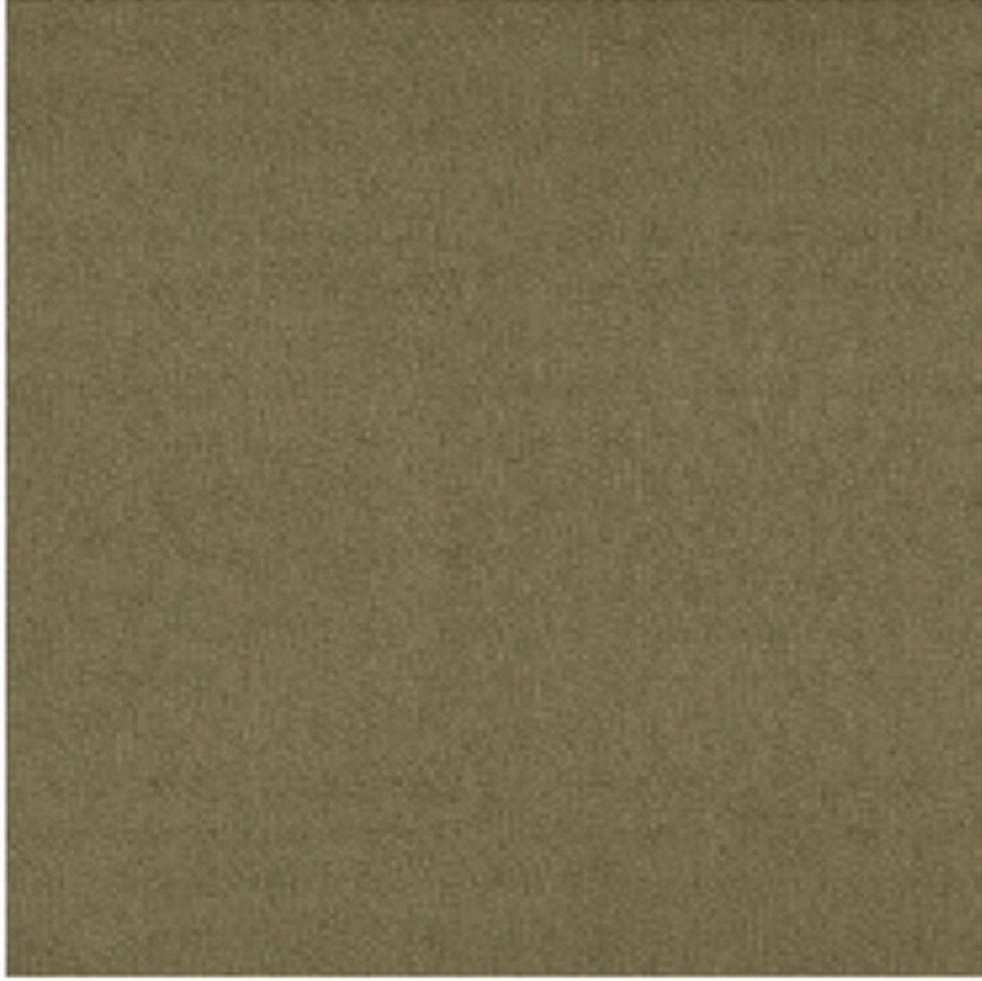
C1 C2  
GB8 GB3

RFM52954257 Song Lines col. 5295



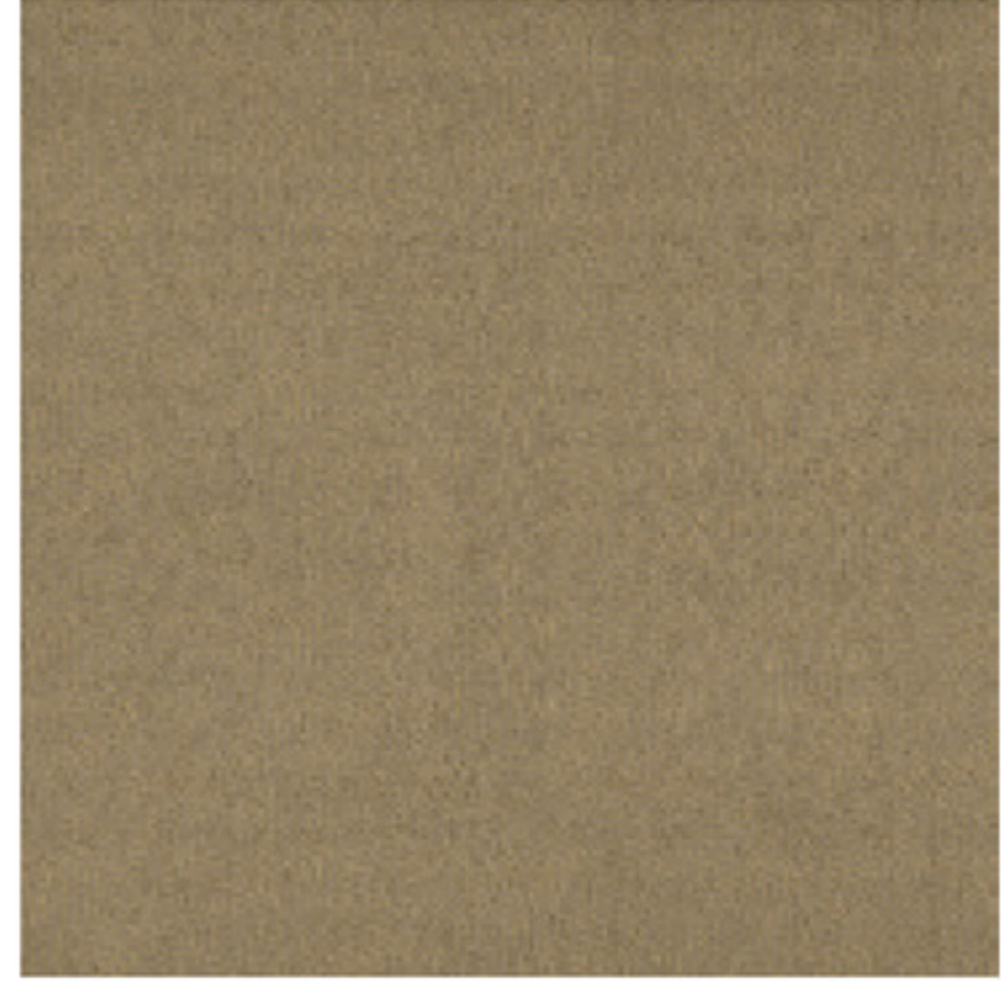
C1 C2  
GB8 GB7

RFM52954258 Song Lines col. 5295



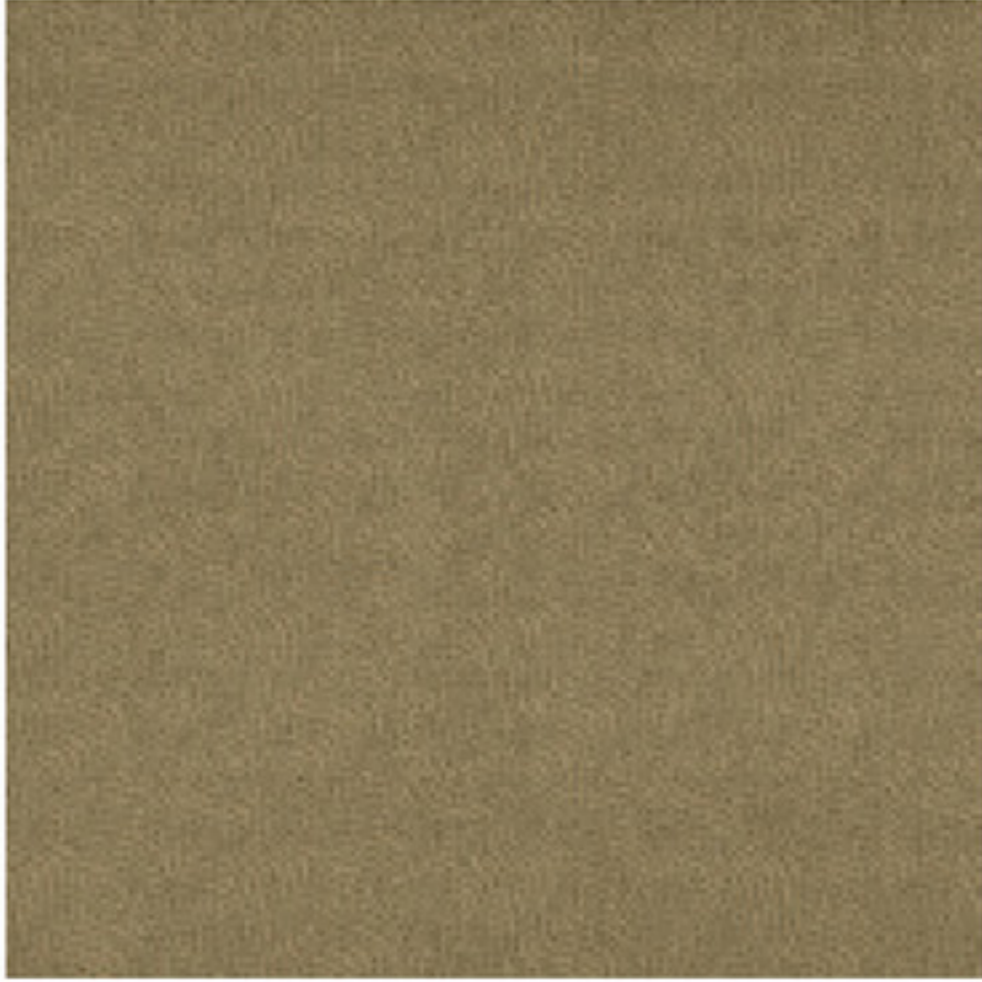
C1 C2  
GB8 GB9

RFM52954259 Song Lines col. 5295



C1 C2  
GB9 GB2

RFM52954260 Song Lines col. 5295



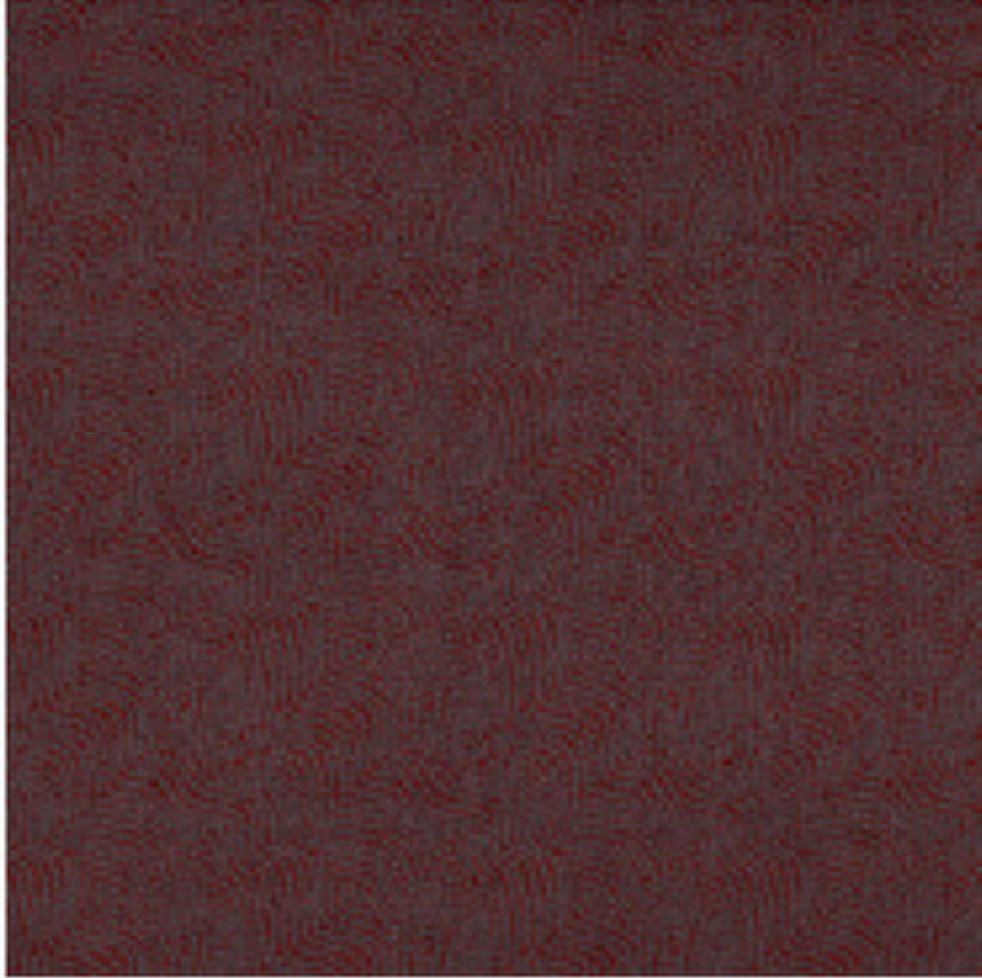
C1 C2  
GB9 GB8

RFM52954261 Song Lines col. 5295



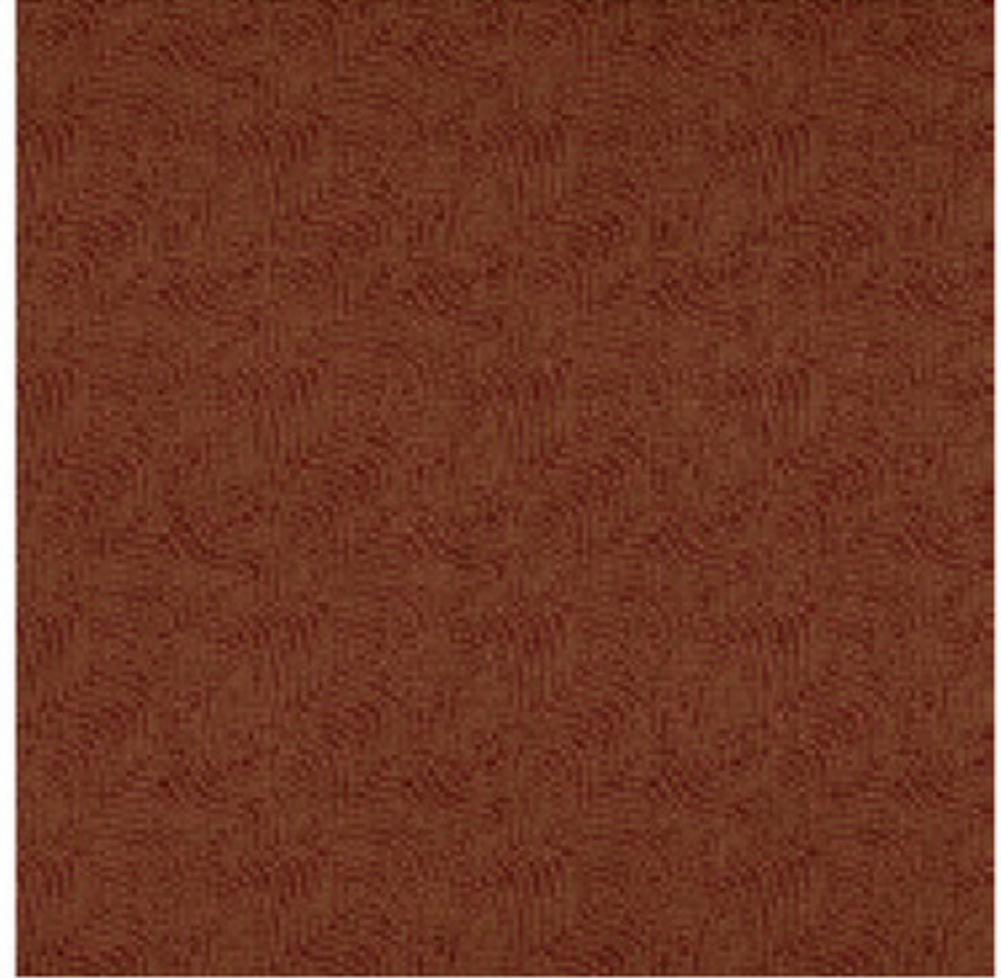
C1 C2  
GB10 GB1

RFM52954262 Song Lines col. 5295



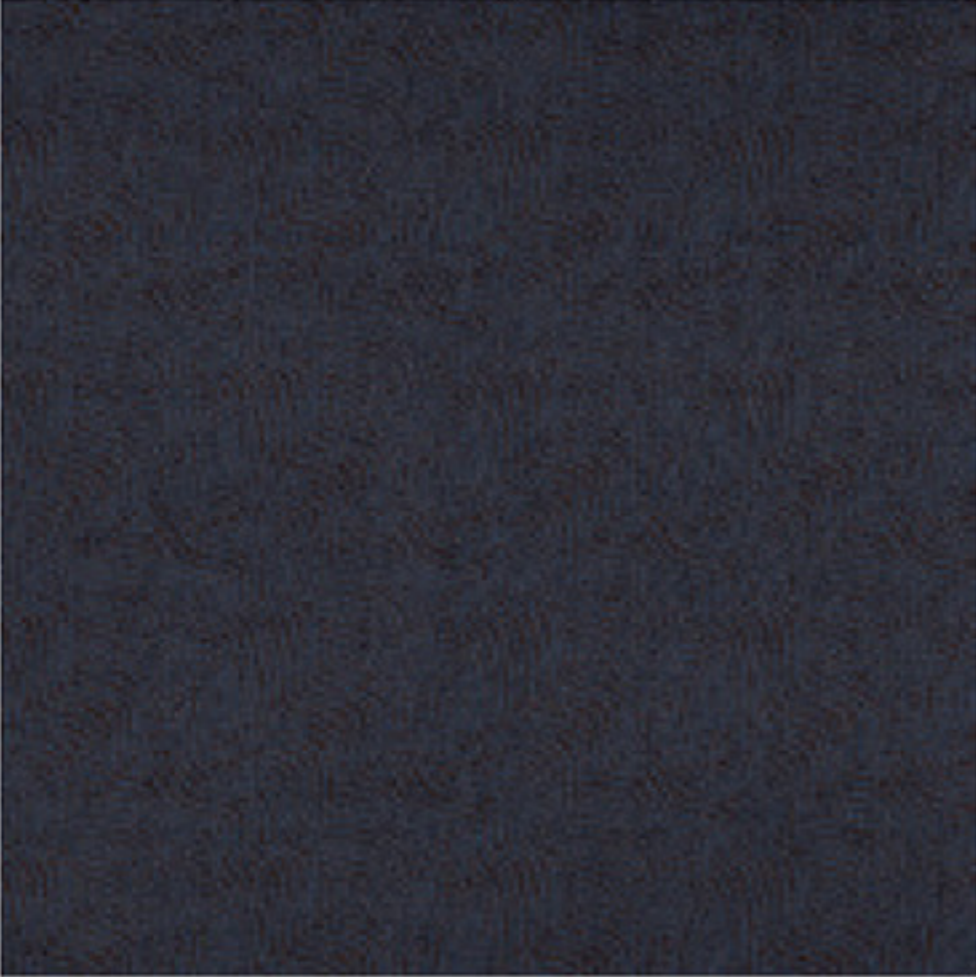
C1 C2  
GB11 GB3

RFM52954263 Song Lines col. 5295



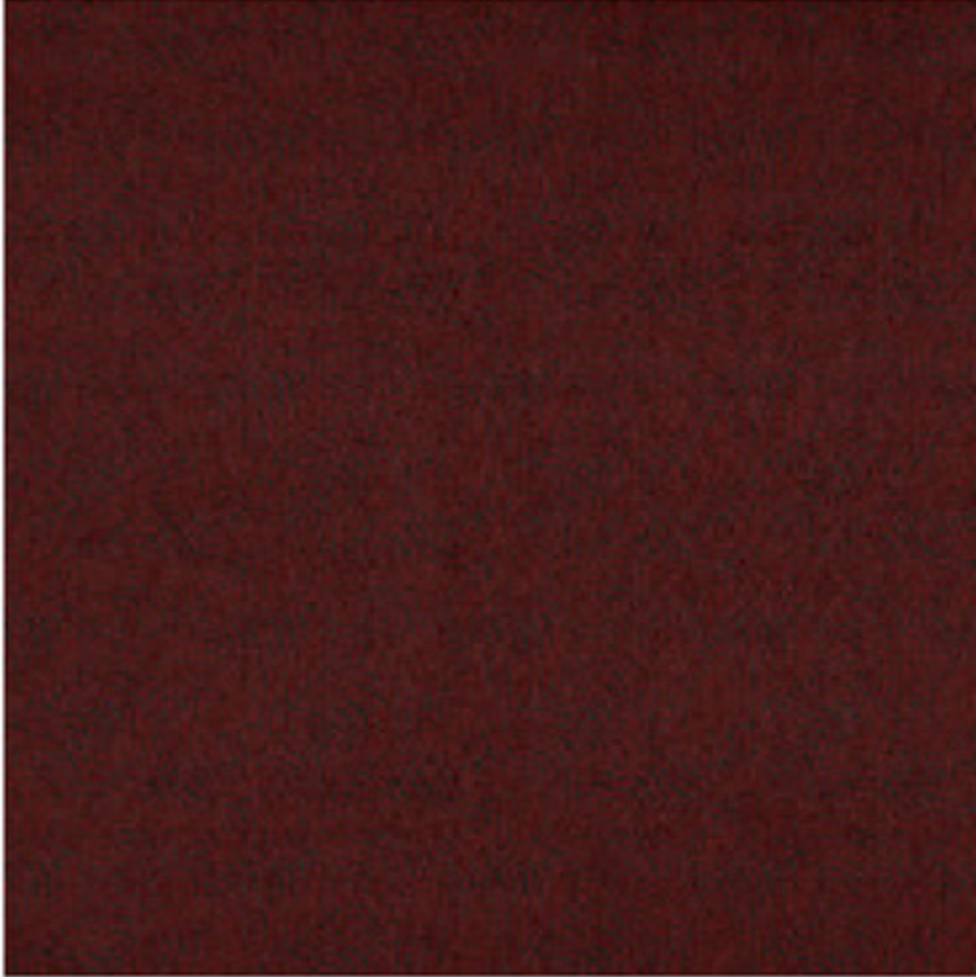
C1 C2  
GB11 GB10

RFM52954264 Song Lines col. 5295



C1 C2  
GB12 GB6

RFM52954265 Song Lines col. 5295



C1 C2  
GB12 GB11

RFM52954279 Stream Lines col. 5295



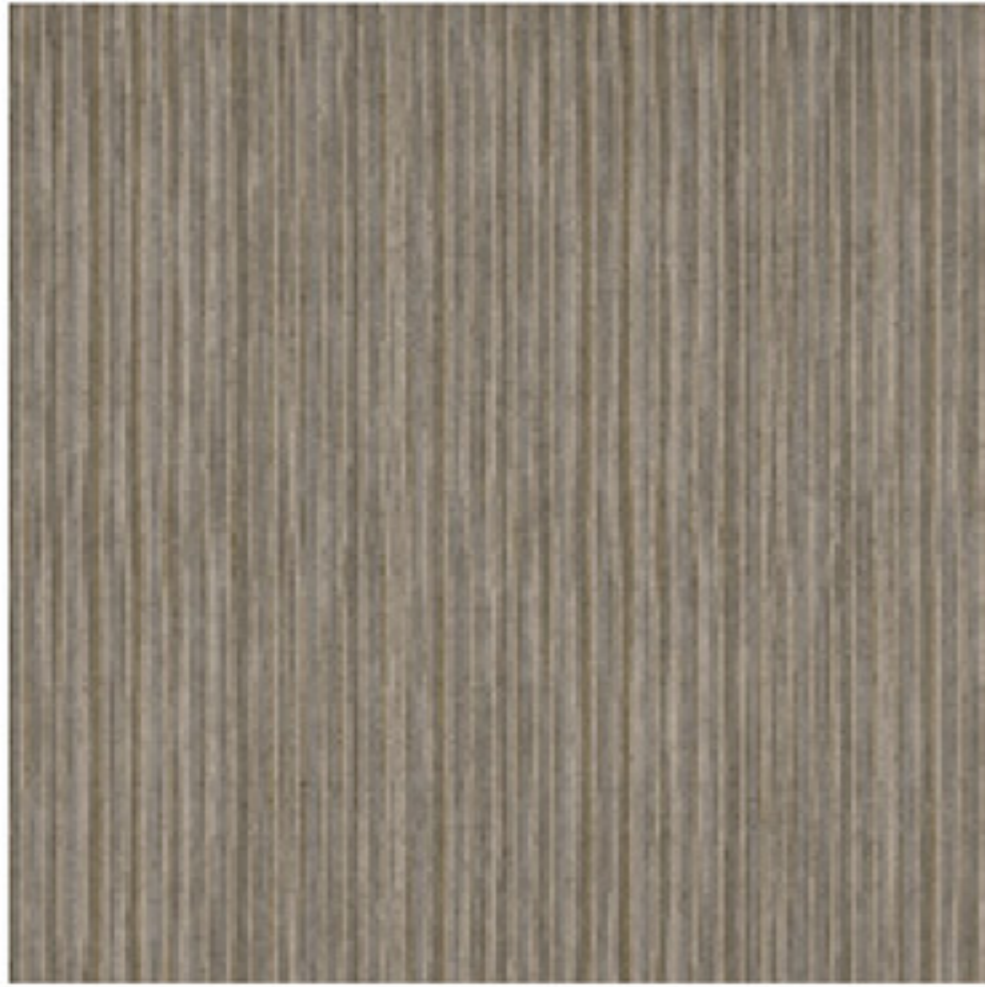
C1 C2 C3 C4 C5  
GB1 AC24 AC25 AC26 AC27

RFM52954280 Stream Lines col. 5295



C1 C2 C3 C4  
GB1 AC24 AC26 AC27

RFM52954270 Stream Lines col. 5295



C1 C2 C3 C4 C5  
GB1 AC14 GB3 AC25 AC14  
GB9

RFM52954281 Stream Lines col. 5295



C1 C2 C3 C4 C5  
GB2 AC16 AC27 GB9 AC25

RFM52954273 Stream Lines col. 5295



C1 C2 C3 C4  
GB2 AC16 AC27 GB9

RFM52954274 Stream Lines col. 5295



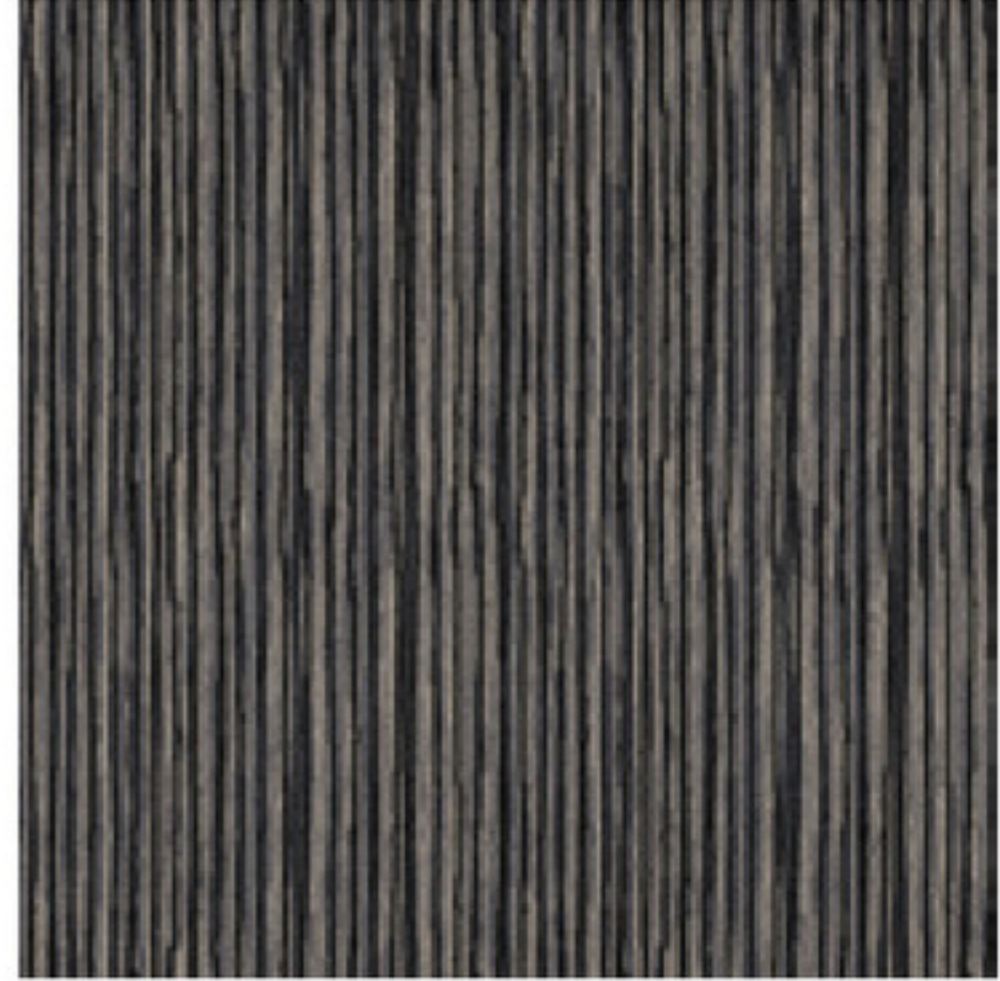
C1 C2 C3 C4  
GB2 AC16 GB3 GB1

RFM52954277 Stream Lines col. 5295



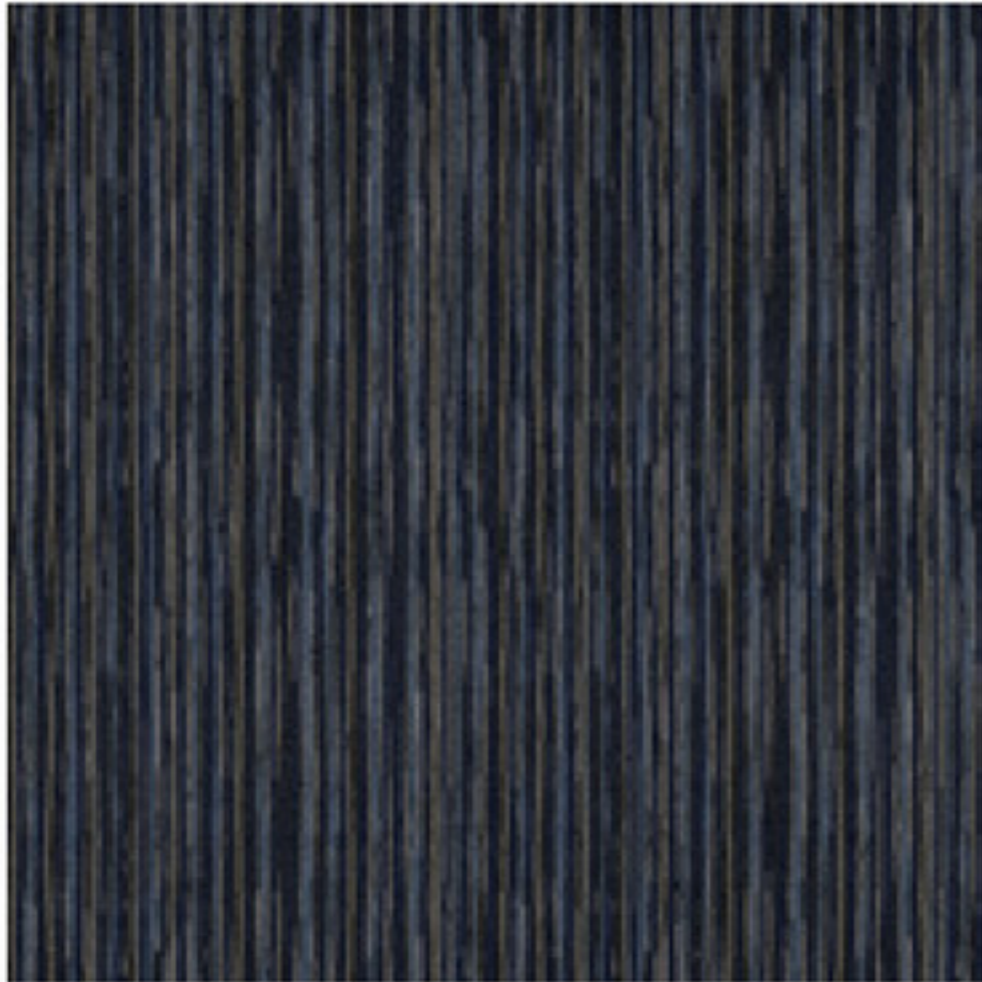
C1	C2	C3	C4	C5
GB2	AC43	GB3	GB1	AC16

RFM52954282 Stream Lines col. 5295



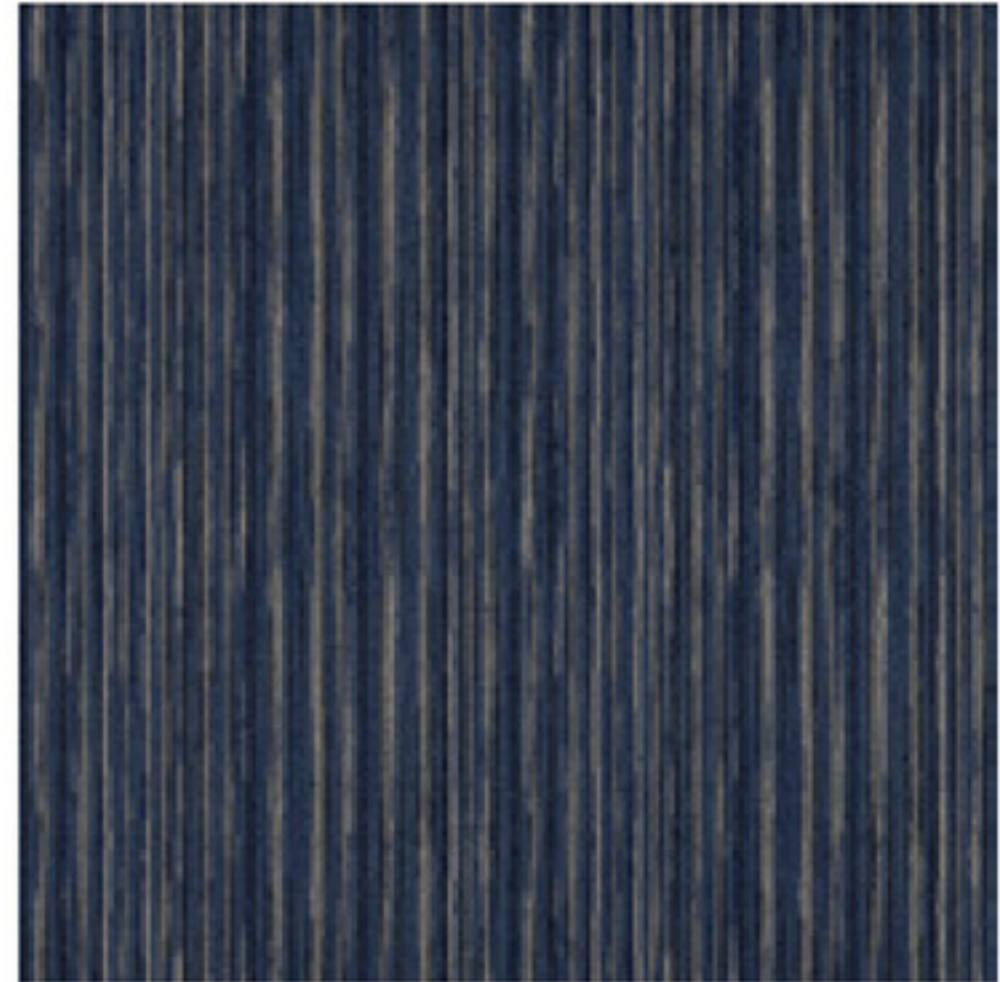
C1	C2	C3	C4
GB4	GB2	GB3	GB1

RFM52954283 Stream Lines col. 5295



C1	C2	C3	C4	C5
GB5	AC18	AC17	AC46	AC13

RFM52954272 Stream Lines col. 5295



C1	C2	C3	C4	C5
GB6	AC46	AC20	AC13	AC17

RFM52954290 Stippled Lines col. 5295



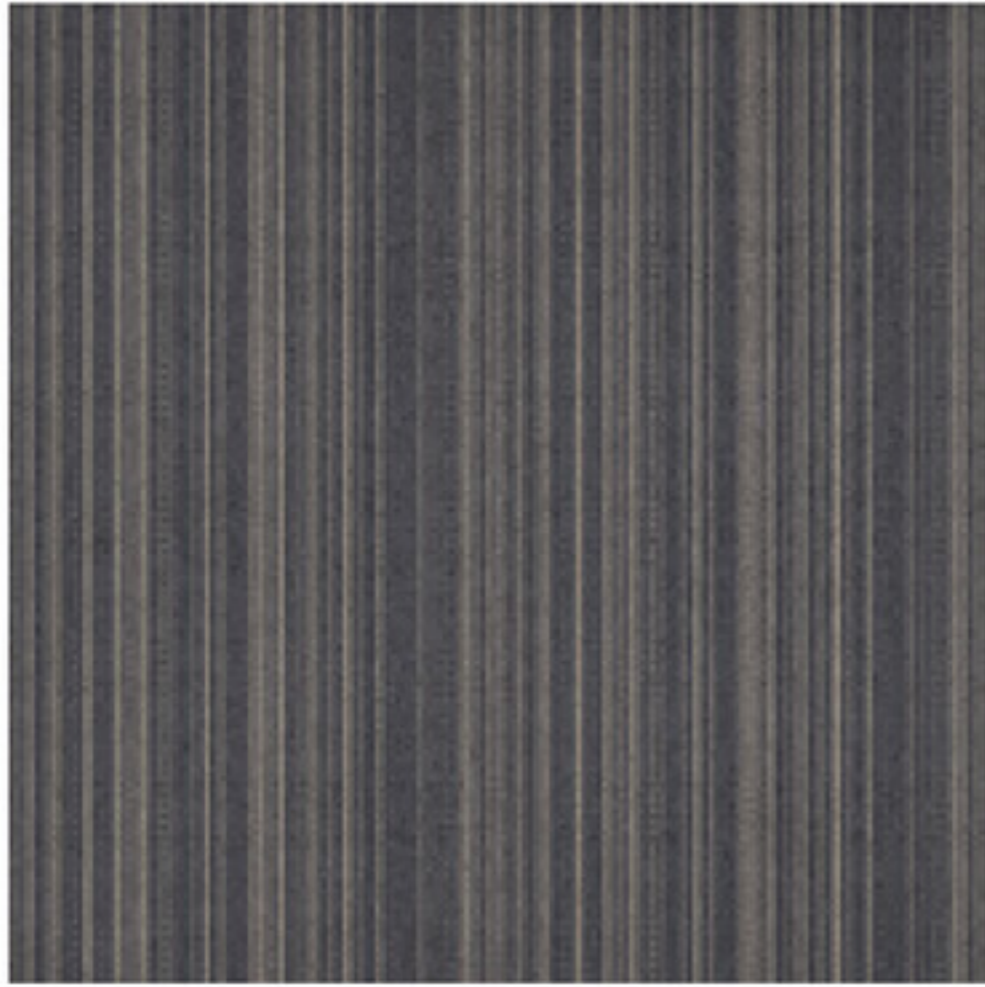
C1 C2 C3 C4 C5 Quater turn only  
GB1 AC14 AC27 AC26 AC23

RFM52954291 Stippled Lines col. 5295



C1 C2 C3 C4 Quater turn only  
GB1 GB3 GB2 GB6

RFM52954295 Stippled Lines col. 5295



C1 C2 C3 Quater turn only  
GB3 GB2 GB1

RFM52954293 Stippled Lines col. 5295



C1 C2 C3 C4 Quater turn only  
GB5 AC18 AC46 AC13

RFM52954294 Stippled Lines col. 5295



C1 C2 C3 C4 C5 Quater turn only  
GB6 AC46 AC20 AC17 AC13



RFM52954294 Stippled Lines

RFM52954307 Split Lines col. 5295



C1 C2 C3 C4 Quater turn only  
GB2 GB1 GB3 AC46

RFM52954308 Split Lines col. 5295



C1 C2 C3 C4 C5 C6 Quater turn only  
GB2 GB1 GB3 GB12 AC46 AC16

RFM52954305 Split Lines col. 5295



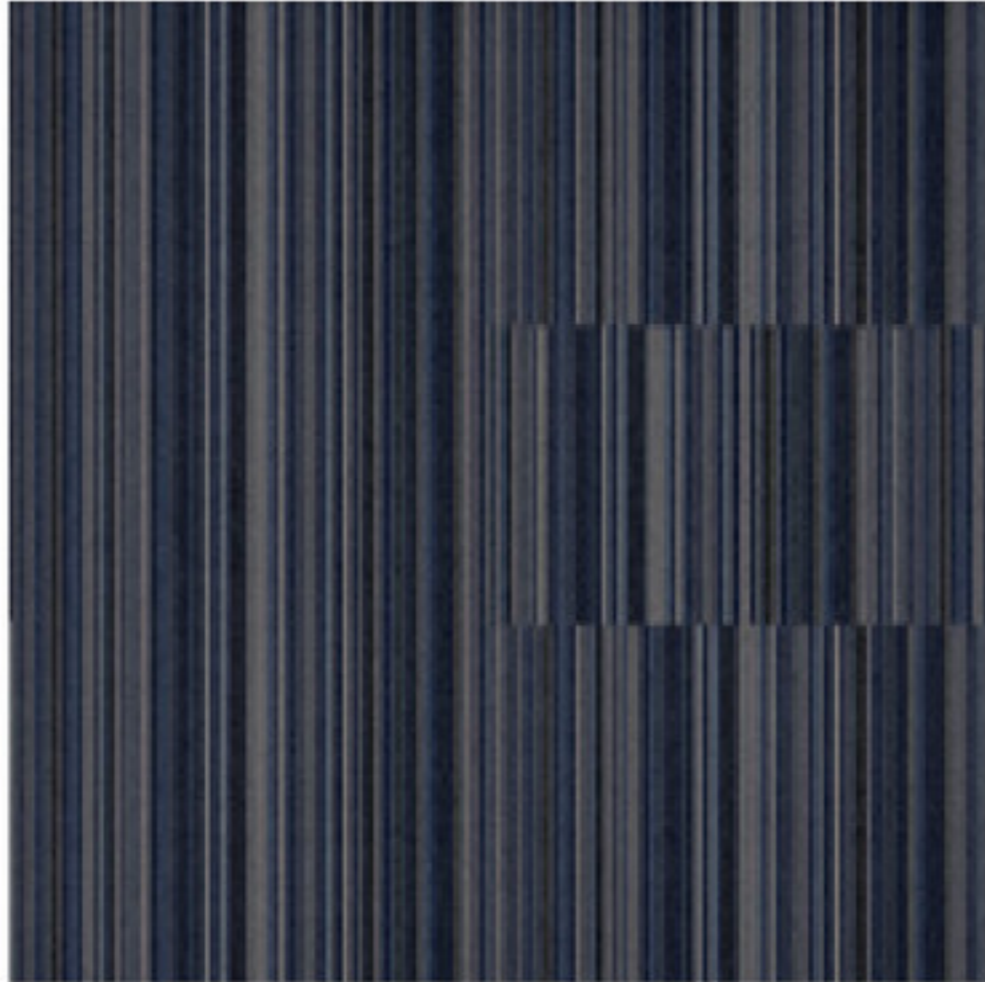
C1 C2 C3 C4 C5 C6 Quater turn only  
GB2 GB9 GB5 GB6 GB3 GB1

RFM52954306 Split Lines col. 5295



C1 C2 C3 C4 C5 Quater turn only  
GB6 AC20 AC13 AC17 AC46

RFM52954311 Split Lines col. 5295



C1 C2 C3 C4 C5 Quater turn only  
GB5 AC18 AC13 AC46 AC17

RFM52954302 Split Lines col. 5295



C1 C2 C3 C4 C5 C6 Quater turn only  
GB3 GB11 GB2 GB9 GB12 GB10



RFM52954303 Split Lines col. 5295



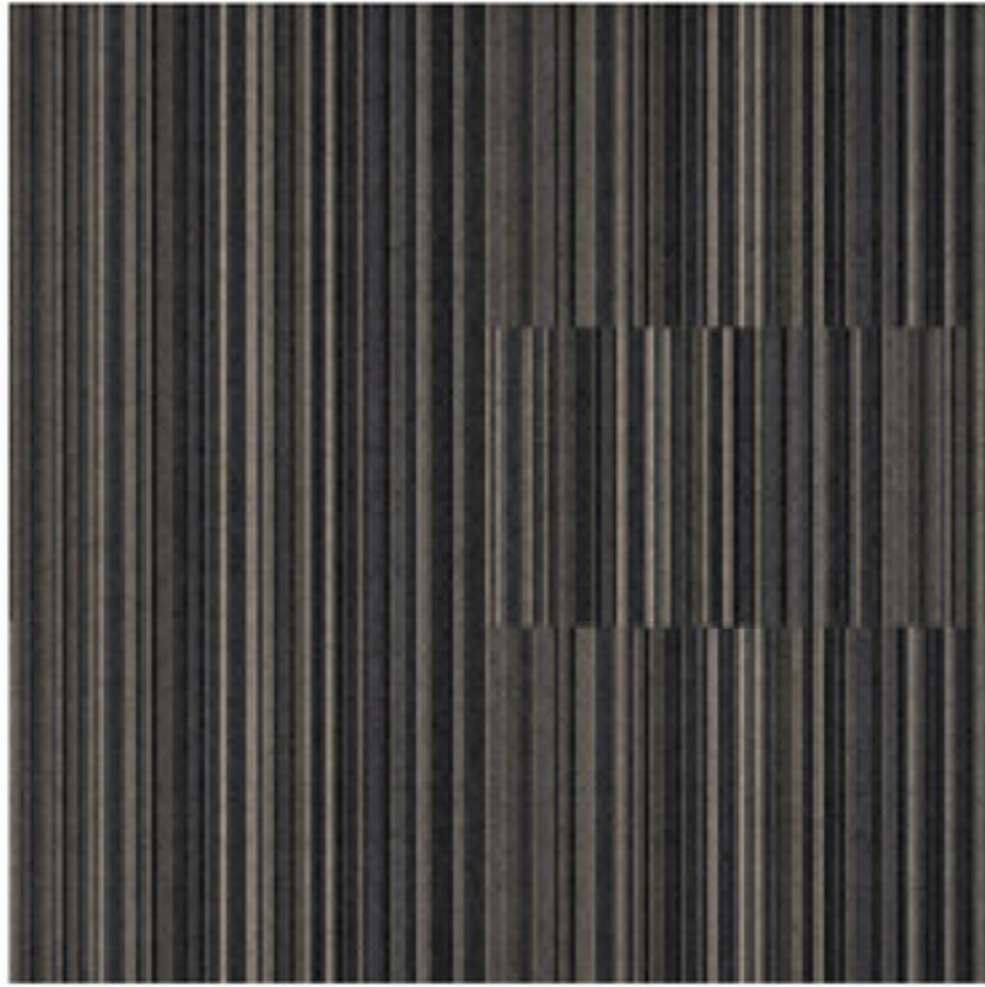
C1 C2 C3 C4 Quater turn only  
GB11 AC36 AC37 AC32

RFM52954312 Split Lines col. 5295



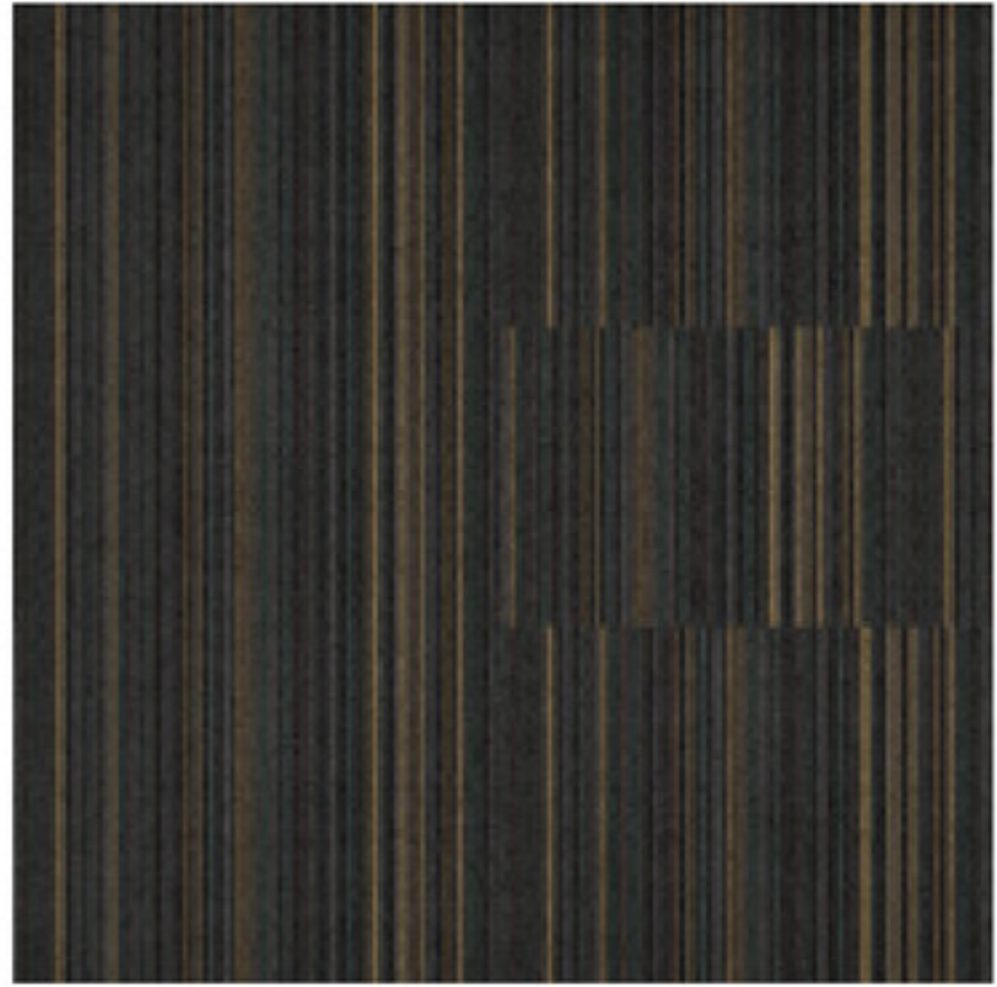
C1 C2 C3 C4 C5 C6 Quater turn only  
GB3 GB9 GB8 GB7 GB1 GB2

RFM52954309 Split Lines col. 5295



C1 C2 C3 C4 Quater turn only  
GB12 GB2 GB3 GB1

RFM52204300 Split Lines col. 5220



C1 C2 C3 C4 C5 Quater turn only  
GB12 GB9 AC65 AC46 AC44

## Sydney



RFM52954200  
page 6



RFM52954201  
page 6



RFM52954202  
page 6



RFM52954203  
page 6



RFM52954205  
page 6



RFM52954208  
page 6



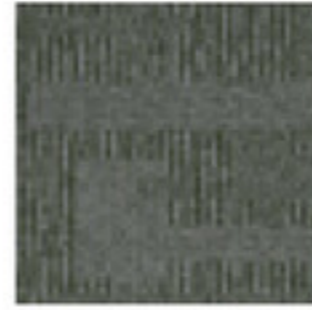
RFM52204202  
page 7



RFM52954206  
page 7



RFM52954207  
page 7



RFM52204203  
page 7

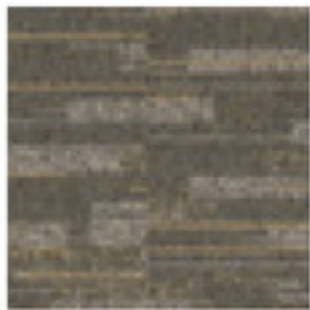


RFM52204200  
page 7



RFM52204201  
page 7

## New York



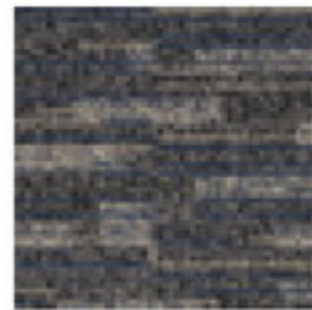
RFM52954210  
page 8



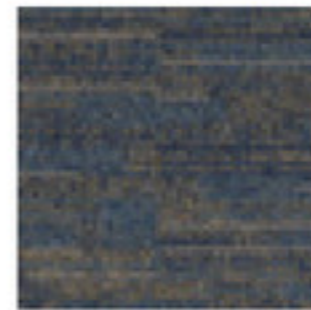
RFM52954211  
page 8



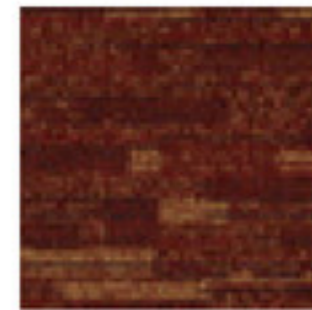
RFM52954212  
page 8



RFM52954213  
page 8



RFM52954214  
page 8



RFM52954215  
page 9

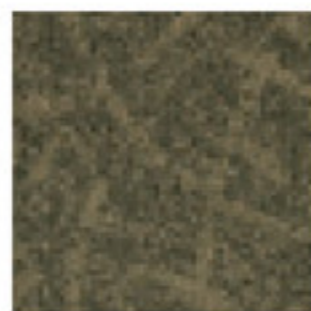


RFM52954216  
page 9

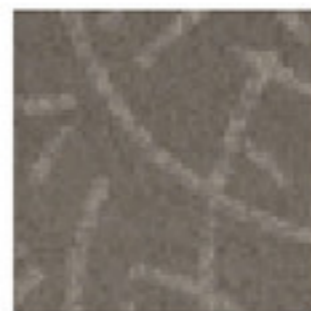
## Nairobi



RFM52954224  
page 10



RFM52954226  
page 10



RFM52954222  
page 10



RFM52954223  
page 10



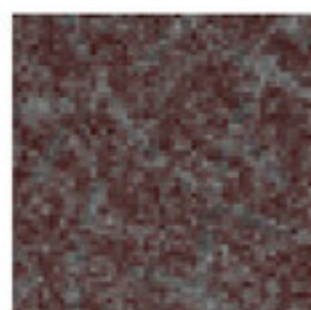
RFM52204220  
page 10



RFM52954225  
page 10



RFM52204222  
page 11

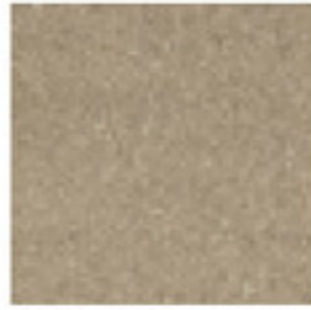


RFM52204223  
page 11

## Helsinki



RFM52954230  
page 12



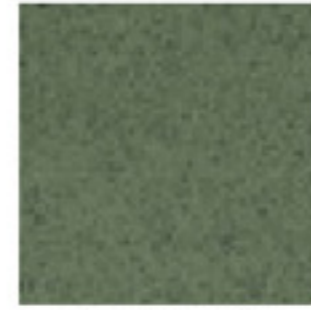
RFM52754230  
page 12



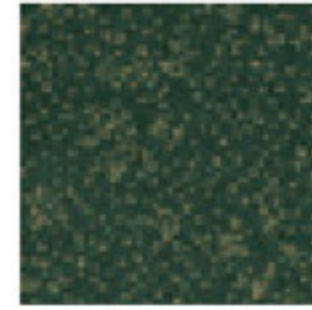
RFM52854230  
page 12



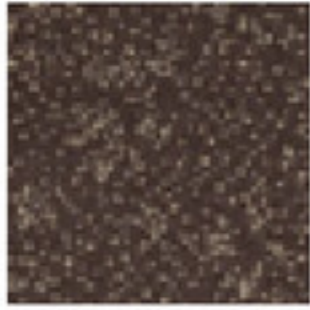
RFM52854231  
page 12



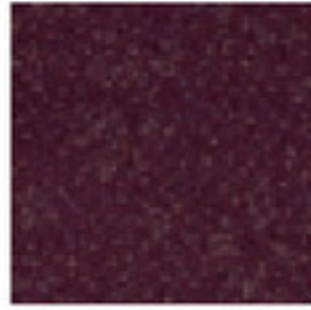
RFM52854232  
page 12



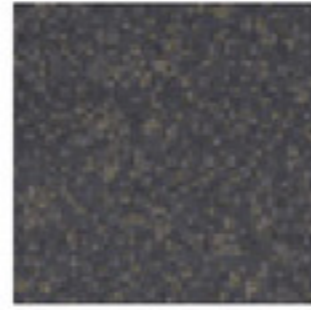
RFM52204230  
page 12



RFM52754231  
page 13



RFM52754232  
page 13



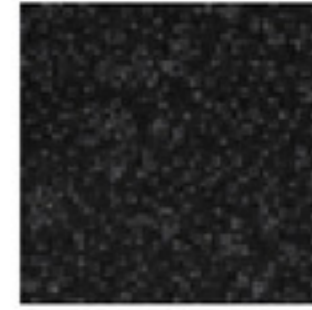
RFM52954231  
page 13



RFM52954232  
page 13



RFM52954233  
page 13



RFM52954234  
page 13

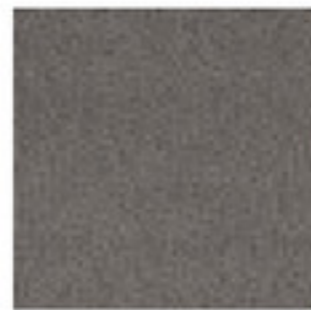
## Song Lines



RFM52954240  
page 14



RFM52954241  
page 14



RFM52954242  
page 14



RFM52954243  
page 14



RFM52954244  
page 14



RFM52954245  
page 14



RFM52954246  
page 16



RFM52954247  
page 16



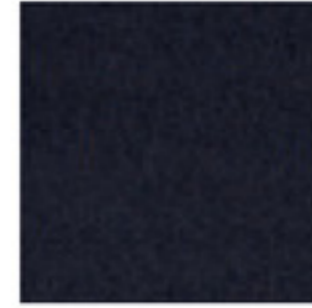
RFM52954248  
page 16



RFM52954249  
page 16



RFM52954250  
page 16



RFM52954251  
page 16



RFM52954252  
page 17



RFM52954253  
page 17



RFM52954254  
page 17



RFM52954255  
page 17



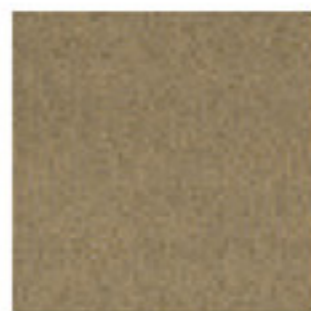
RFM52954256  
page 17



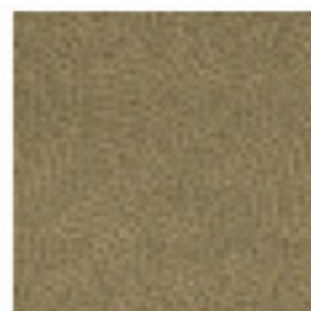
RFM52954257  
page 17



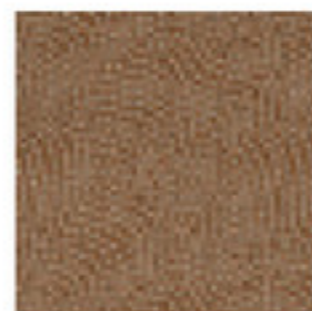
RFM52954258  
page 18



RFM52954259  
page 18



RFM52954260  
page 18



RFM52954261  
page 18



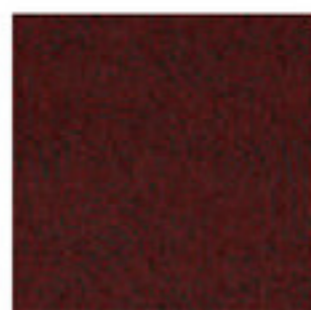
RFM52954262  
page 18



RFM52954263  
page 18



RFM52954264  
page 19



RFM52954265  
page 19

### Stream Lines



RFM52954279  
page 20



RFM52754280  
page 20



RFM52754270  
page 20



RFM52954281  
page 20



RFM52954273  
page 20



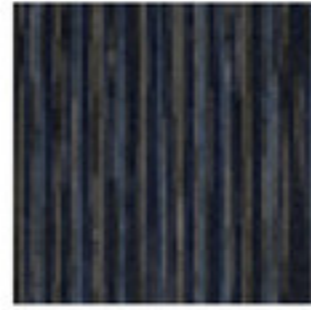
RFM52954274  
page 20



RFM52954277  
page 21



RFM52954282  
page 21



RFM52954283  
page 21



RFM52954272  
page 21

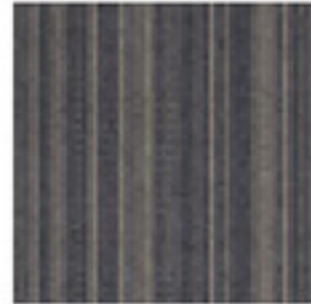
### Stippled lines



RFM52954290  
page 22



RFM52954291  
page 22



RFM52954295  
page 22



RFM52954293  
page 22



RFM52954294  
page 22

### Split lines



RFM52954307  
page 24



RFM52954308  
page 24



RFM52954305  
page 24



RFM52954306  
page 24



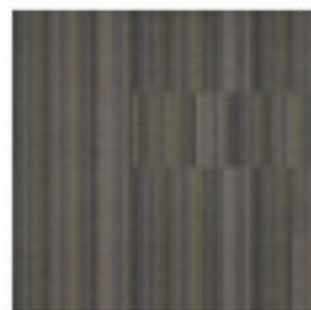
RFM52954311  
page 24



RFM52954302  
page 24



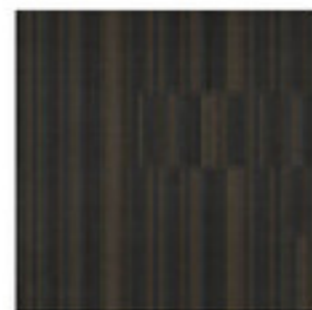
RFM52954304  
page 25



RFM52954312  
page 25



RFM52954309  
page 25



RFM52204300  
page 25









## SUBSIDIARIES:

Denmark  
France  
Germany  
Norway  
Sweden  
United Kingdom  
United Arab Emirates

## AGENTS/DISTRIBUTORS:

Australasia	India	Pakistan
Austria	Iran	Poland
Bahrain	Ireland	Portugal
Belgium/Luxembourg	Italy	P.R. China - Shanghai
Bosnia - Herzegovenia	Japan	Qatar
Bulgaria	Jordan	Romania
Canada	Kenya	Russia
Croatia	Kuwait	Saudi Arabia
Cyprus	Latvia	Serbia
Czech Republic	Lebanon	Singapore
Estonia	Lithuania	Slovakia
Finland	Macau	Slovenia
Greece	Malta	Spain
Hungary	Montenegro	Switzerland
Hong Kong	Netherlands	Turkey
Iceland	Oman	Ukraine

For further contact information please visit  
[www.egecarpet.com](http://www.egecarpet.com)