



carré by ege®

The carré modular collection is a collection of exclusive modules in size 48x48 cm offering three modern modular designs all available in 9 colour combinations.

- 3 designs each available in 9 colour combinations
- Specially developed loop quality
- Undisputed performance standard - EN1307, extra heavy use
- Patented ege® modular backing - 100% textile, PVC- and bitumen free
- Delivered from stock
- Minimum order: 1 box (4,61m<sup>2</sup>)
- Samples available in size 24x24 cm for dispatch within 24 hours

# carré

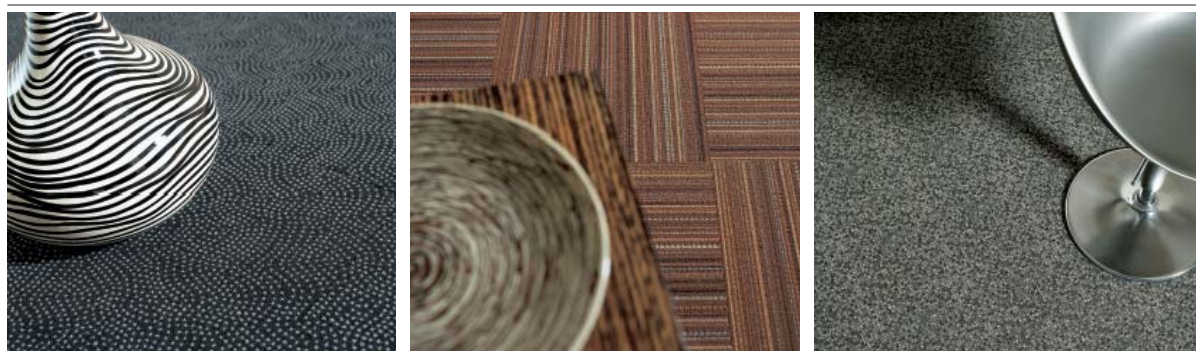
Die carré modular Kollektion ist eine Kollektion von aussergewöhnlichen Modulen in der Grösse 48x48 cm. Die Module werden in drei modischen Designs angeboten - alle in 9 Farbkombinationen.

- 3 Designs - alle in 9 Farbkombinationen
- Eine speziell konzipierte schlinge Fliesenqualität
- Unangefochtener Leistungsstandard – EN 1307, extreme Beanspruchung
- Patentierter ege® Modular Rücken - 100% Textil, ohne PVC und Bitumen
- Lagerhaltung
- Mindestbestellmenge: 1 Box (4,61m<sup>2</sup>)
- Muster in Grösse 24x24 cm werden innerhalb von 24 Stunden geliefert

La collection carré modular est une collection composée de modèles exclusifs en dalles de dimension 48 cms x 48 cms.

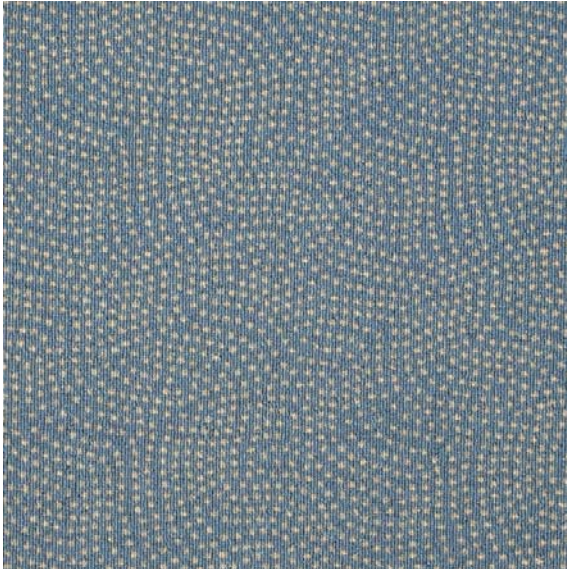
Trois dessins modernes sont disponibles dans 9 combinaisons de couleur.

- 3 dessins en 9 combinaisons couleur chacun
- Dalle moquette velours bouclé spécialement étudiée pour vos besoins
- Standard reconnu EN 1307, usage très élevé
- Dossier ege® modular breveté - 100% textile, sans PVC et bitume
- Livraison sur stock
- Commande minimum: 1 carton de 20 dalles (4,61m<sup>2</sup>)
- Échantillons dans la taille 24x24 cm disponibles sous 24 heures"



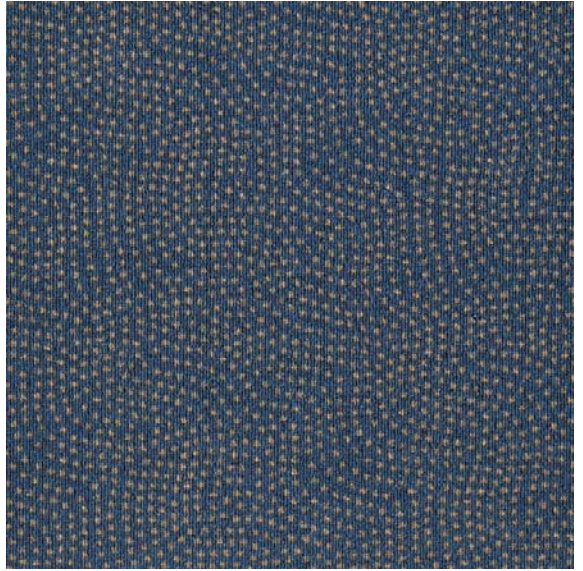
0538520

Song lines



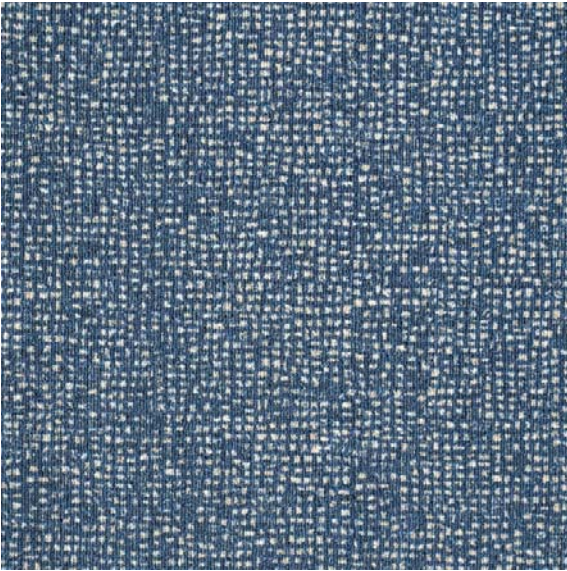
0538580

Song lines



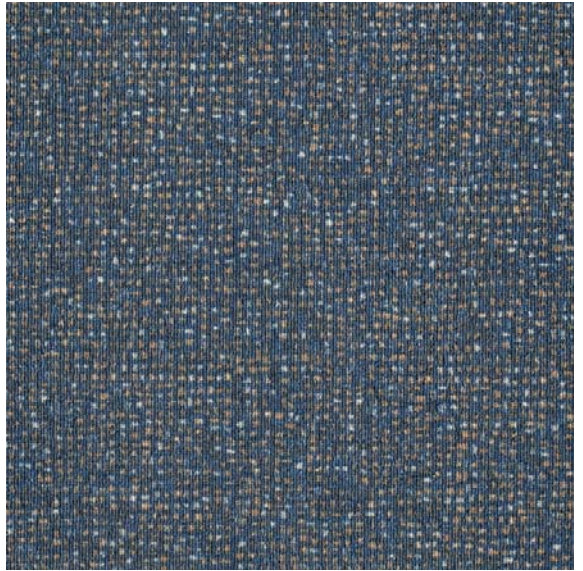
0538530

Old road



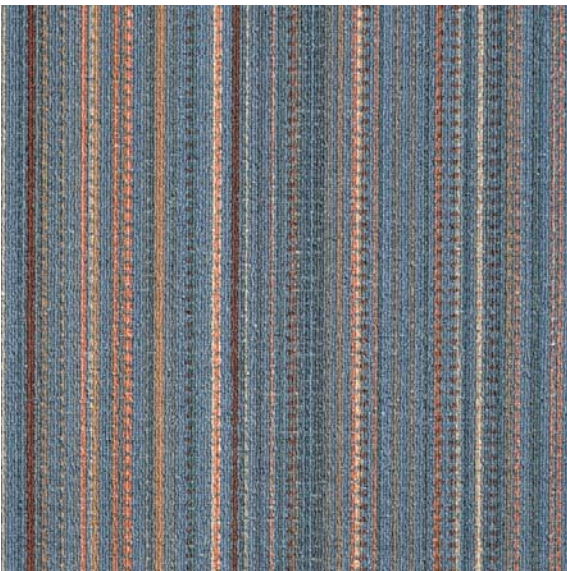
0538560

Old road



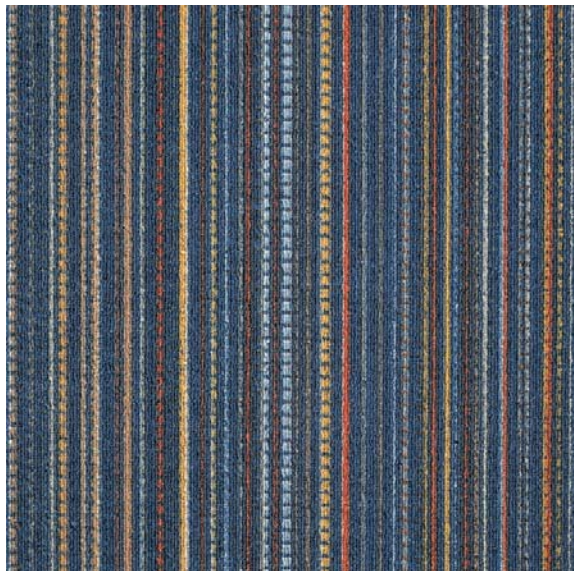
0538550

Stippled lines



0538570

Stippled lines





0538250

Old road



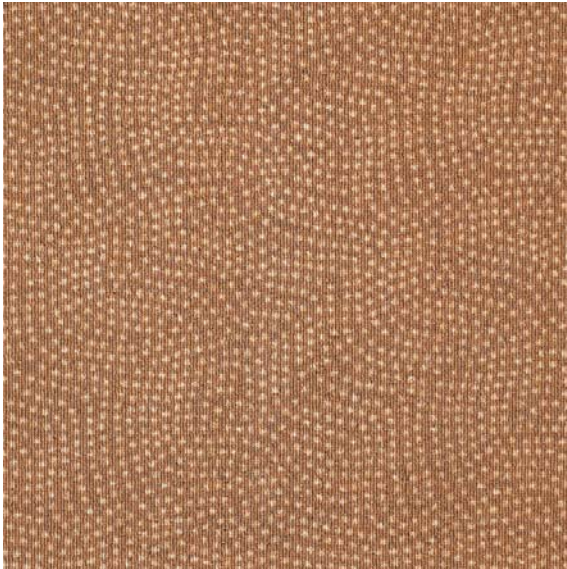
0538140

Old road



0538270

Song lines



0538350

Song lines



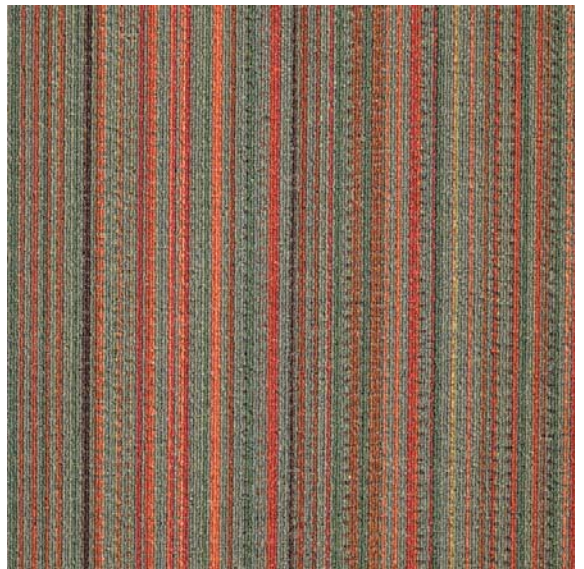
0538340

Old road



0538360

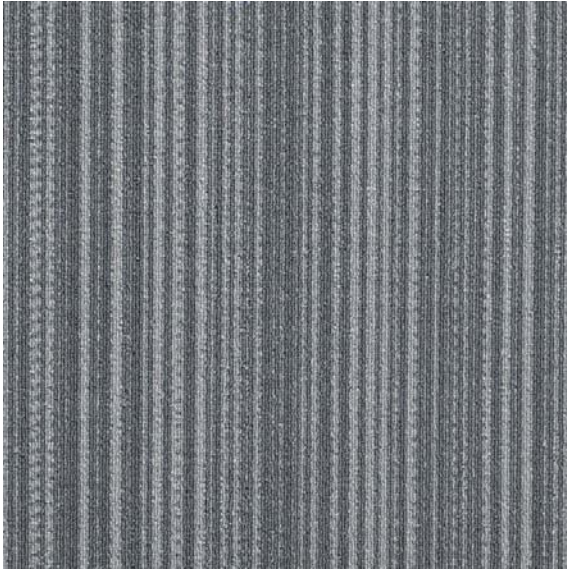
Stippled lines





0538750

Stippled lines



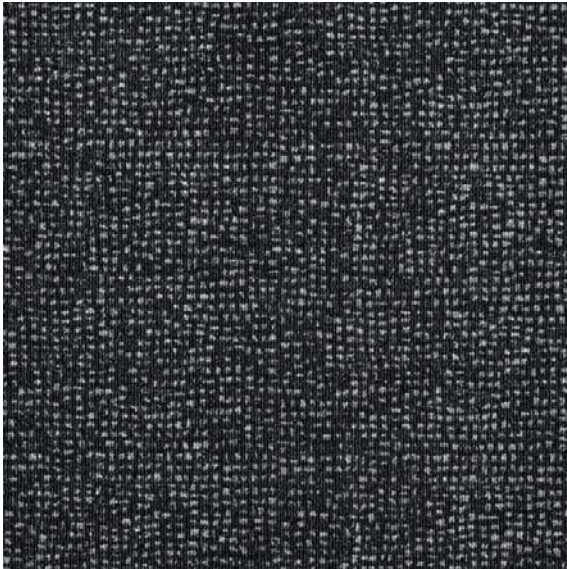
0538790

Stippled lines



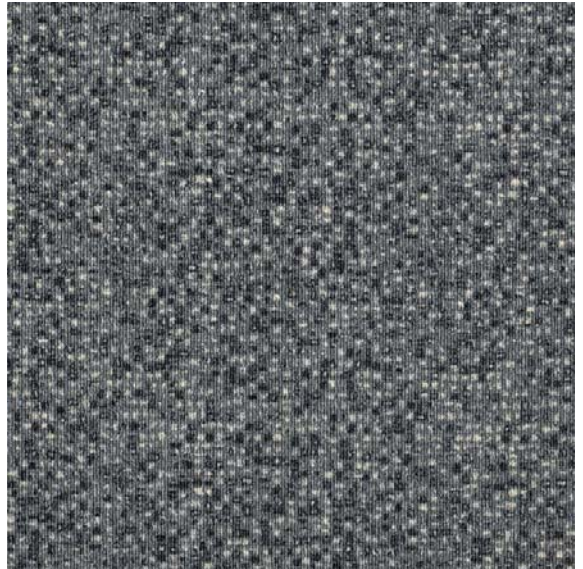
0538800

Old road



0538760

Old road



0538780

Song lines



0538810

Song lines



0538160

Song lines



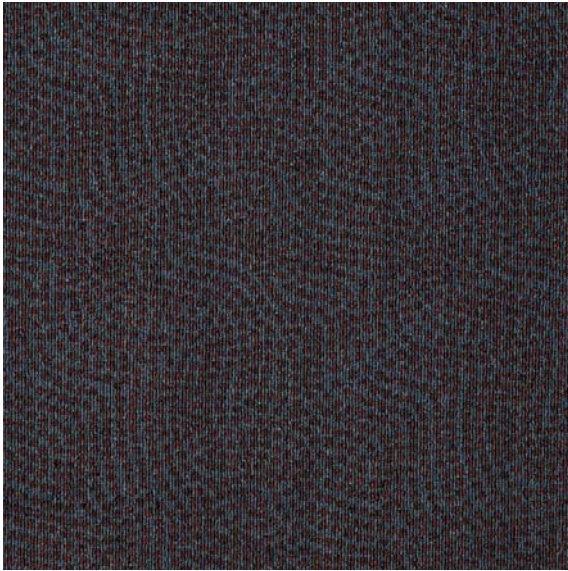
0538150

Stippled lines



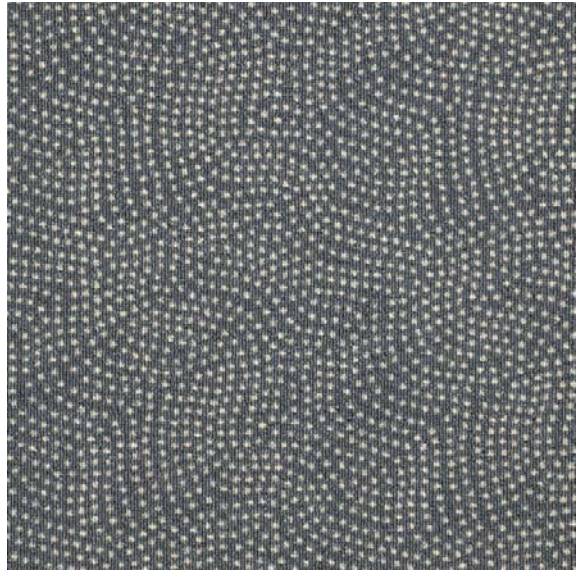
0538590

Song lines



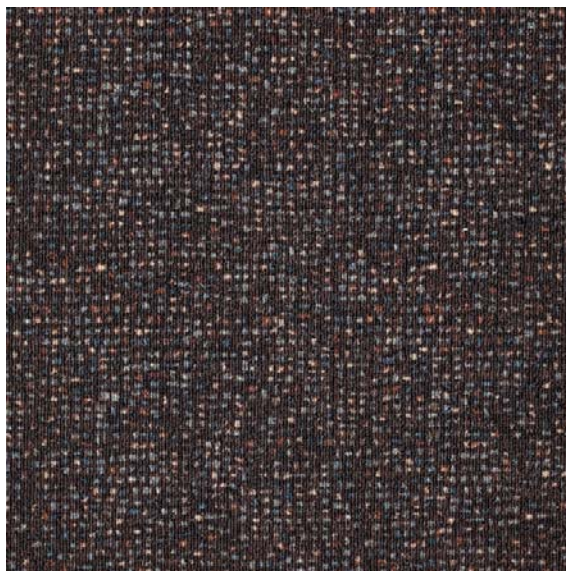
0538770

Song lines



0538190

Old road

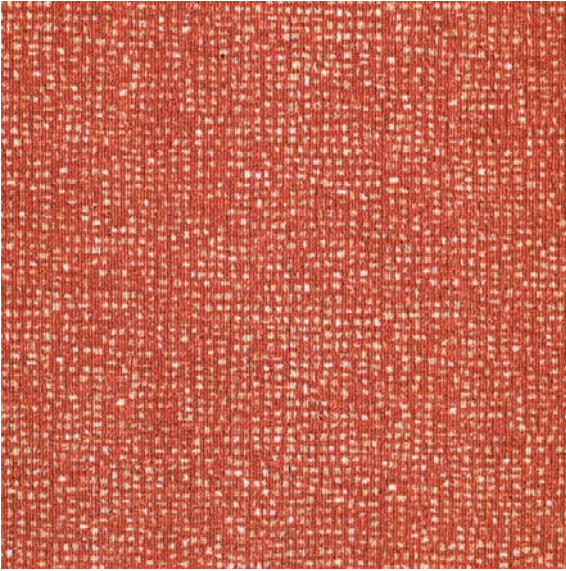






0538920

Old road



0538470

Stippled lines



0538650

Stippled lines



0538930

Stippled lines





## AUSTRIA

Höchsmann (east)  
tel.: +43 2236 42746  
fax: +43 2236 24807  
h.hoechsmann@aon.at

Schiebel (west)  
tel.: +43 6212 6974  
fax: +43 6212 7795  
schiebel@aon.at

## BAHRAIN

BFG Commercial Services  
tel.: +973 17 741 484  
fax: +973 17 741 494  
bfgcomm@batelco.com.bh

## BELGIUM/LUXEMBOURG

Intercovering NV  
tel.: +32 3 459 8538  
fax: +32 3 459 8540  
annevanderroost@intercovering.com

## BOSNIA - HERZEGOVINA

Flooring d.o.o.  
tel.: +387 (0)51 32 47 70  
fax: +387 (0)51 32 47 71  
sukale@inecco.net

## BULGARIA

City Design Centre  
tel.: +359 2 953 15 15  
fax: +359 2 953 10 28  
info@citydesigncentre.com

## CANADA

Tappatec Inc.  
tel.: +1 905 279 8882  
fax: +1 905 279 0889  
tappatec@sympatico.ca

## CYPRUS

N&S Syrimis Contracts Ltd.  
tel.: +357 2244 2243  
fax: +357 2231 3399  
syrimis.contracts@cytanet.com.cy

## CZECH REPUBLIC

Optimal Servis Centrum s.r.o.  
tel.: +420 2 8384 1565-6  
fax: +420 2 8384 3180  
info@optimal-servis.cz

## DENMARK CONTRACT

ege contract a/s  
tel.: +45 86 21 00 00  
fax: +45 86 21 50 77  
egecontract@ege.dk

## ESTONIA

AS Lincona Konsult  
tel.: +372 6 103 750  
fax: +372 6 103 751  
lincona@lincona.ee

## FINLAND

OY Orient Occident Ltd.  
tel.: +358 9 260 660  
fax: +358 9 801 1227  
floors2@orientoccident.fi

## FRANCE

egetaepper france e.u.r.l.  
tel.: +33 1 6912 3939  
fax: +33 1 6912 3930  
france@egecarpet.com

## GERMANY

egetaepper (Deutschland)GmbH  
tel.: +49 221- 969 727-0  
fax: +49 221- 969 727-24  
deutschland@egecarpet.com

## GREECE

Wefi Print Hellas SA  
tel.: +30 210 6100 797  
fax: +30 210 6100 798  
dimitri@wphellas.gr

## HUNGARY

Top Trade Export-Import KFT.  
tel.: +361 221 8926  
fax: +361 383 2935  
top.trade@mail.datanet.hu

## INDIA

Applause Carpets  
tel.: +91 11 2685 1400  
fax: +91 11 2651 6160  
apca@del2.vsnl.net.in

## IRAN

Tarani Tecnical & Trading  
tel.: +98 21 871 1613 & 14  
+98 21 871 9612 & 13  
fax: +98 21 872 8030  
info@taranico.com

## IRELAND

Provincial Floorcoverings Ltd.  
tel.: +353 1 62 63 913  
fax: +353 1 62 63 960

## ITALY

Giovanni Comoletti  
tel.: +39 0163 54444  
fax: +39 0163 54433  
comoletti@tin.it

## KENYA

Spiegel Ltd.  
tel.: +254 2 376 27 62  
fax: +254 2 376 16 77  
spiegel@accesskenya.com

## KUWAIT

Ajal Contracting & General Trading Co.  
tel.: +965 2427773  
fax: +965 2423578  
ajal@qualitynet.net

## LATVIA

Baltiijas Gridu serviss sia  
tel.: +371 7 063 780  
fax: +370 7 063 781  
bgs@actek.lv

## LEBANON

Pictura SAL  
tel./fax: +961 1 500 465  
info@sommerlb.com

## LITHUANIA

Ogrinda  
tel.: +370 5 27 23 822  
fax: +370 5 27 57 470  
ogrinda.floor@takas.lt

## MALTA

Better Living Centre  
tel.: +356 21 695 601/2  
fax: +356 21 661 029  
info@betterlivingcentre.com

## NETHERLANDS

Onstein Textiel Agenturen  
tel.: +31 35 62 37 337  
fax: +31 35 62 84 950  
guytex@knoware.nl

## NEW ZEALAND

Anthéz Projects Ltd.  
tel.: +64 9 425 4561  
fax: +64 9 425 4581  
info@egecarpet.co.nz

## NORWAY

egetepper norge a/s  
tel.: +47 22 51 63 00  
fax: +47 22 51 63 01  
norge@egecarpet.com

## OMAN

Alasfoor Furnishing LLC  
tel.: +968 561 400  
fax: +968 562 377  
alafoco@omantel.net.om  
alafurc@omantel.net.om

## PAKISTAN

Seenqaaf Industrial Co.  
tel.: +92 21 4522 485  
fax: +92 21 4314 726  
seenqaaf@cyber.net.pk

## POLAND

Polmaster Co. Ltd.  
tel.: +48 22 632 36 69  
fax: +48 22 632 54 57  
polmaster@polmaster.com.pl

Topwert Swiat Dywanow Sp. z.o.o.

tel.: +48 22 720 47 85  
fax: +48 22 720 47 89

## PORTUGAL

Decorpisus-Decorações Lda.  
tel.: +351 21 454 81 60  
fax: +351 21 454 81 69  
decorpisus@netcabo.pt

## P.R. CHINA - SHANGHAI

Trayton Trading  
tel.: +86 21 6207 6767  
fax: +86 21 6207 6750  
mail@trayton.com

## QATAR

Jameel Showroom  
tel.: +974 4650101  
fax: +974 4653777  
aljameel@qatar.net.qa

## RUSSIA

Ortgraph  
tel.: +7 095 725-7844  
fax: +7 095 725-7846  
ortgraph@dol.ru

Brandi & Schnipper  
tel.: +7 095 785 4000  
fax: +7 095 785 4005  
info@schnipper.ru

## SERBIA AND MONTENEGRO

ITG d.o.o.  
tel.: +381 11 632 787  
fax: +381 11 186 460  
itg.sr@eunet.yu

## SINGAPORE

AlphaPac Connections  
tel.: +65 9739 7097  
fax: +65 6353 6483  
haimengt@singnet.com.sg

## SLOVAKIA

NOREM s.r.o.  
tel.: +421 2 52 961 608  
fax: +421 2 52 961 437  
norem@gtinet.sk

## SLOVENIA

Flooring d.o.o.  
tel.: +386 1 500 5330  
fax: +386 1 500 5360  
info@flooring.si

## SPAIN

Ibermoqueta ege, S.L.  
tel.: +34 91 651 1121/651 1399  
fax: +34 91 651 3305  
ege@ibermoqueta.com

## SWEDEN

egetepper sverige ab  
tel.: +46 31 778 0050  
fax: +46 31 778 1350  
sverige@egecarpet.com

## SWITZERLAND

Karl Schubiger - Textilagentur (east)  
tel.: +41 079-419 58 50  
fax: +41 01-941 41 05  
ksc@egecarpet.com

Hans-Peter Imhof - ITEX Textilagentur (west)

tel.: +41 079-661 64 78  
fax: +41 01-761 11 51  
hpi@egecarpet.com

## TURKEY

Integro Flooring  
tel.: +90 212 327 33 33  
fax: +90 212 327 88 57  
info@integroflooring.com

## UKRAINE

Stek  
tel.: +380 44 2570074  
fax: +380 44 2580155  
import@stek.kiev.ua

Thermostrip

tel.: +380 44 49 40 095  
fax: +380 44 49 40 096  
t-strip@i.kiev.ua

## UNITED ARAB EMIRATES

Gemaco Interiors  
Abu Dhabi  
tel.: +971 2 633 9100  
fax: +971 2 633 9200

Dubai

tel.: +971 4 338 9500  
fax: +971 4 338 9995  
info@gemaco-uae.com

## UNITED KINGDOM

ege carpets limited  
tel.: +44 1257 239 000  
fax: +44 1257 239 001  
uk@egecarpet.com



Leverandør til det Kgl. Danske Hof  
Purveyors to The Royal Danish Court

Head Office

egetæpper a/s • Industrivej Nord 25 • DK-7400 Herning • Tel. +45 97 11 88 11 • Fax: +45 97 11 95 80 • E-mail: ege@ege.dk • www.egecarpet.com