



modular express
by ege®

The modular collection offers an exclusive collection of modular designs and options generated using ege's successful highline express programme.

ege® 48x48 cm modules are the very essence of freedom of choice. Consider the looks, materials and budget and select the module quality that perfectly matches your requirements. This outstanding collection contains limitless possibilities for creating individual and creative modular flooring solutions supporting both the function and the atmosphere of any building. Recolour with the highline express palettes or create unique floors by combining different patterns in matching or contrasting colours to suit your design and budget requirements.

- Specially selected patterns in a wide variety of colour ways
- 3 comprehensive colour palettes for recolouring the designs
- 3 modular qualities from 630 g/m² to 1100 g/m² including modular loop pile options
- Undisputed performance standard - EN1307, extra heavy use
- Patented ege® modular backing - 100% textile, PVC- and bitumen free
- Dispatch in 3 weeks, min. 20 modules (4.61 m²). A comprehensive full size sample services available with 24-hours dispatch

modular express

Die Modulkollektion bietet eine exklusive Bemusterungsauswahl innerhalb des highline express - Systems. Mit den ege®-Modulen in 48 x 48 cm ist die volle Flexibilität und ein optimales Preis-Leistungsverhältnis gegeben. Durch die Übertragbarkeit aller Designs auf verschiedene Qualitäten bieten sich erhebliche Freiheiten in punkto. Warenoptik und schließlich auch Budget an, denn ege® unterstützt den sparsamen Investor - ohne selbst an der Qualität zu sparen.

Gestalten Sie mit der Farbskala des highline express-Systems einzigartige Flächen. Während in den Anfängen der Teppichfliesen relativ uniforme oder in Schachbrettoptik verlegte Böden an der Tagesordnung waren, eröffnen sich jetzt durch das für ege® typische highline express-System völlig neue Möglichkeiten.

Durch die Replizierung einzelner Expressfarben in diversen Designs sind eine Vielzahl von Kombinationsvarianten gegeben.

Die Highlights auf einem Blick:

- Besonders ausgewählte Muster in zahlreichen Farbkombinationen
- 3 attraktive Farbpaletten
- 3 Qualitäten mit 630 bis 1100 g/m² Poleinsatzgewicht, inklusive einer hochwertigen Schlingenqualität
- Unangefochtener Leistungsstandard – EN 1307, extreme Beanspruchung
- Patentierter ege® Modular Rücken - 100% Textil, ohne PVC und Bitumen
- 3 Wochen Lieferzeit, ab einer Mindestmenge von 20 Modulen (4,61 m²). Alle Designs sind als Musterprobe innerhalb 48 Stunden verfügbar

La collection modular, c'est toute une gamme des dessins exclusifs sur dalles textiles réalisables également à partir du programme highline express.

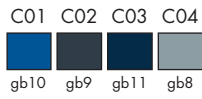
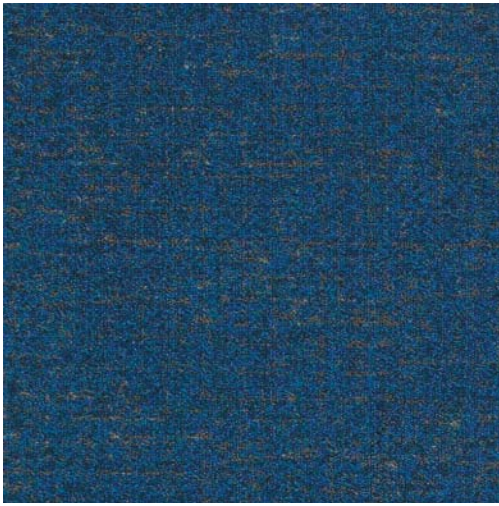
Esthétisme classique ou contemporain laissant le champ libre à l'imagination du concepteur, performances techniques du matériau et respect du coût global font modular un revêtement de sol textile répondant aux plus hautes exigences des prescripteurs et maître d'ouvrage.

Couleurs, dessins ou structures, la pluralité des solutions créatives offertes par modular et la flexibilité de la technique Millitron permettent d'associer étroitement l'ambiance décorative et la fonction de chaque espace intérieur, font des moquettes ege® une référence dans le monde entier.

- Des graphismes originaux sélectionnés dans une grande variété de coloris
- Un choix de trois palettes permettent de recolorier les dessins
- Trois qualités de velours de 630 g/m² à 1100 g/m² ainsi que des possibilités de velours bouclé, pour s'adapter à l'usage des locaux
- Standard reconnu EN 1307, usage très élevé
- Dossier ege® modular breveté - 100% textile, sans PVC et bitume
- Livraison sous 3 semaines, 20 dalles minimum (4.61 m²). Service échantillons avec expédition sous 24h

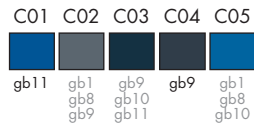
RFT5220056 Tweed

Palette 5220



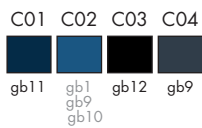
RFT5220039 Forest Floor

Palette 5220



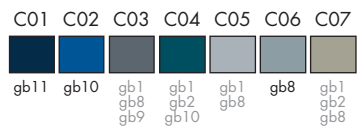
RFT5220055 Tweed

Palette 5220



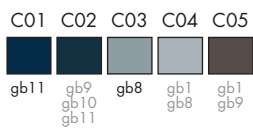
RFT5220047 Cortex

Palette 5220



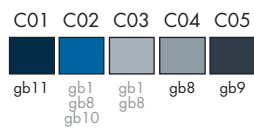
RFT5220050 Wallpaper

Palette 5220



RFT5220063 Canvas

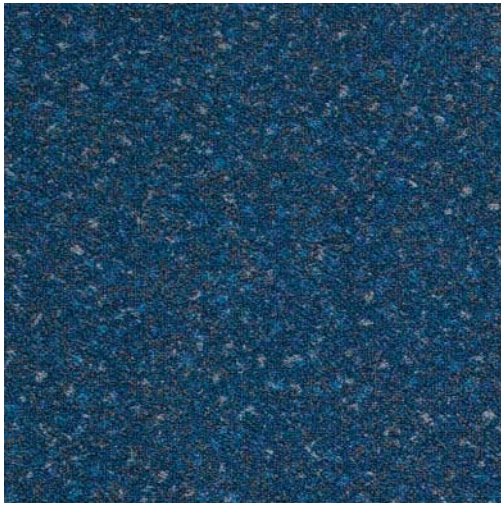
Palette 5220





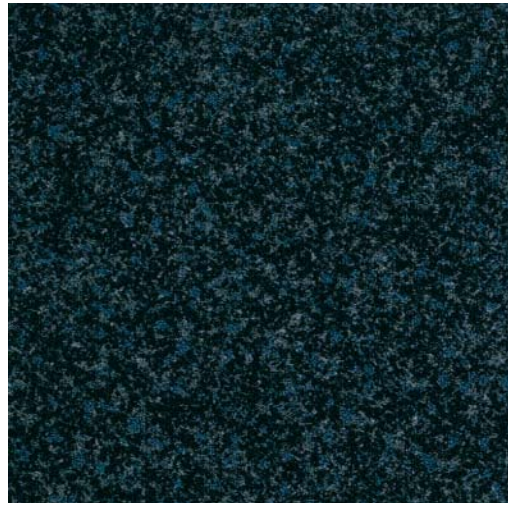
RFT5220050 Wallpaper
RFT5220051 Wallpaper

RFT5220043 Terazzo Palette 5220



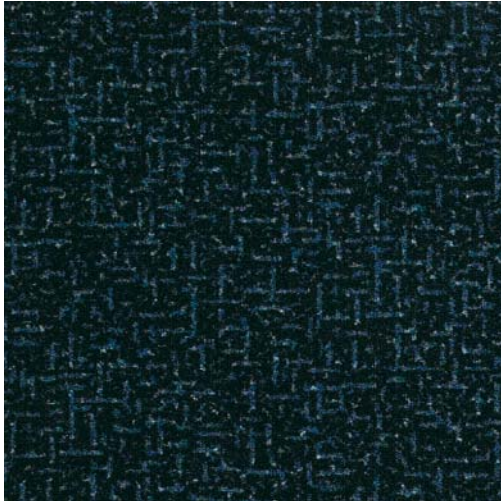
C01	C02	C03	C04	C05	C06
gb9	gb8 gb10 gb11	gb1 gb8 gb11	gb1 gb8 gb10	gb8 gb9 gb10	gb8

RFT5220044 Terazzo Palette 5220



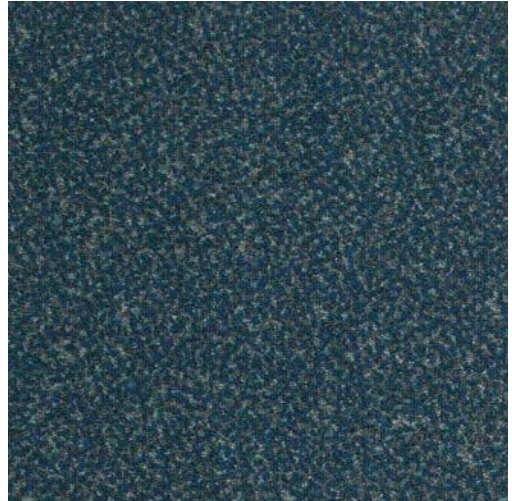
C01	C02	C03	C04	C05
gb12	gb9	gb1 gb8 gb11	gb8	gb1 gb8 gb9

RFT5220051 Wallpaper Palette 5220



C01	C02	C03	C04	C05
gb12	gb9 gb10 gb11	gb9	gb8	gb11

RFT5220038 Forest Floor Palette 5220



C01	C02	C03	C04	C05
gb11	gb8	gb9	gb1 gb8 gb9	gb1 gb8

RFT5220058 Thatch Palette 5220



C01	C02	C03	C04	C05	C06
gb8	gb9	gb11	gb8 gb9 gb10	gb1 gb8 gb11	gb1 gb8 gb9

RFT5220046 Cortex Palette 5220



C01	C02	C03	C04	C05	C06	C07
gb11	gb8	gb1 gb8 gb9	gb9	gb1 gb8	gb1 gb3 gb8	gb1 gb2 gb8

RFT5210067 Pixels

Palette 5210



C01	C02	C03	C04	C05	C06	C07	C08	C09
gb10 gb11 gb12	gb5 gb6 gb11	gb11	gb1 gb3 gb10	gb5	gb4 gb5 gb6	gb1 gb4 gb5	gb1 gb3 gb5	gb3

RFT5210066 Pixels

Palette 5210



C01	C02	C03	C04	C05	C06	C07	C08	C09	C10
gb11	gb10	gb3	gb1 gb3 gb10	gb5	gb1 gb3 gb5	gb1 gb10 gb11	gb4	gb1 gb10	gb6

RFT5210043 Terazzo

Palette 5210



C01	C02	C03	C04	C05	C06
gb6	gb10	gb1 gb5 gb10	gb1 gb10 gb11	gb6 gb10 gb11	gb5

RFT5210044 Terazzo

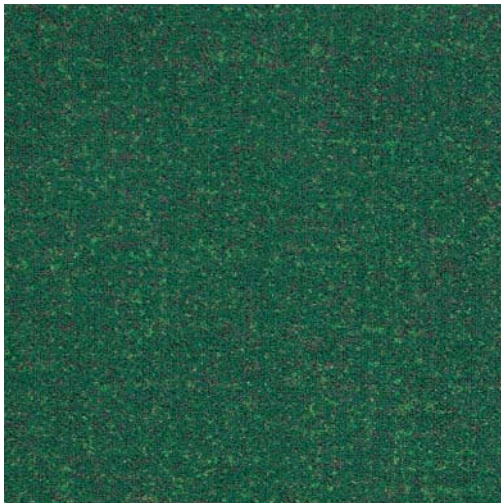
Palette 5210



C01	C02	C03	C04	C05
gb6 gb11	gb10	gb11	gb1 gb10 gb11	gb6

RFT5210054 Tweed

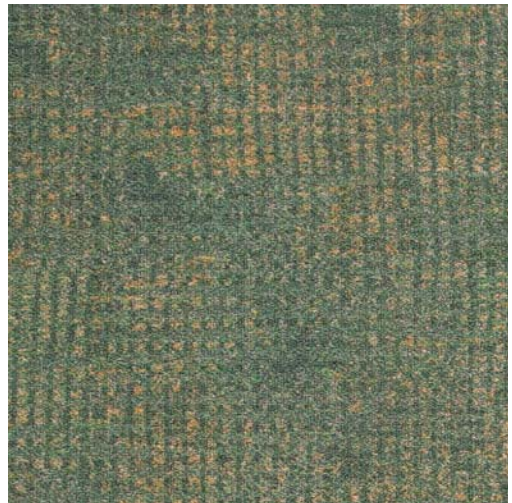
Palette 5210



C01	C02	C03	C04
gb5	gb6	gb11	gb10 gb11 gb12

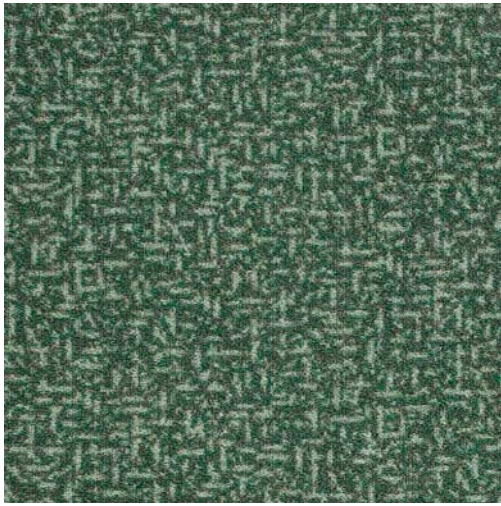
RFT5210059 Thatch

Palette 5210



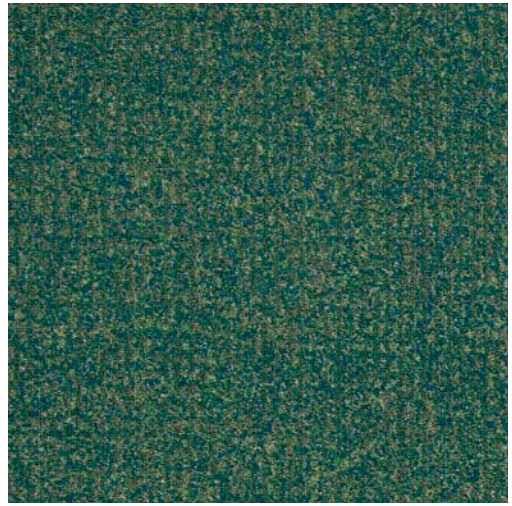
C01	C02	C03	C04	C05	C06	C07
gb1	gb10	gb1 gb10 gb11	gb3	gb5	gb11	gb1 gb2 gb10

RFT5220052 Wallpaper Palette 5220



C01	C02	C03	C04	C05
gb7	gb6 gb7 gb9	gb8	gb1 gb8	gb1 gb9

RFT5220045 Cortex Palette 5220



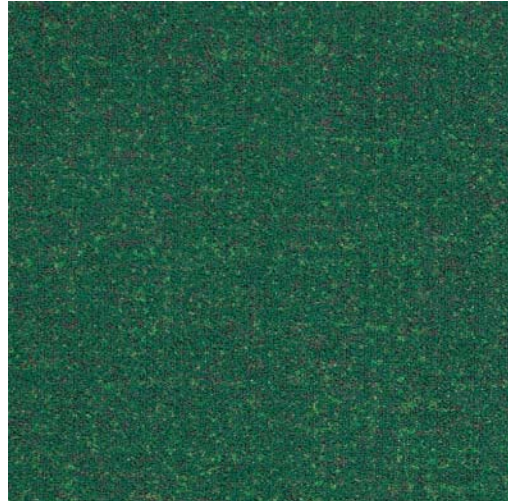
C01	C02	C03	C04	C05	C06	C07	C08
gb7	gb1 gb2 gb6	gb1 gb8 gb9	gb6	gb1 gb8	gb11	gb1 gb3 gb8	gb1 gb2 gb8

RFT5220062 Canvas Palette 5220



C01	C02	C03	C04	C05	C06
gb7	gb6	gb1 gb8	gb8	gb1 gb2 gb8	gb9

RFT5220054 Tweed Palette 5220



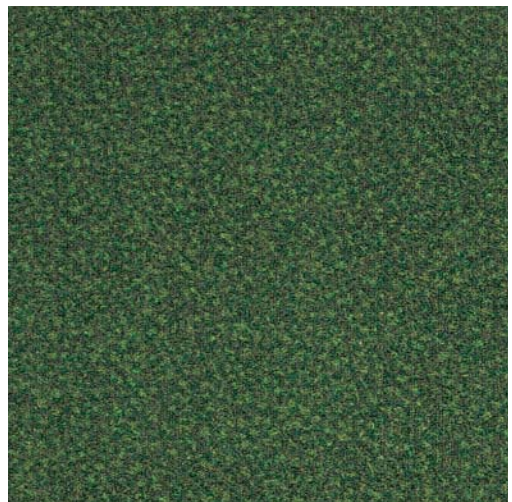
C01	C02	C03	C04
gb7	gb6	gb1 gb2 gb6	gb9

RFT5220065 Pixels Palette 5220



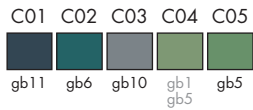
C01	C02	C03	C04	C05	C06	C07	C08	C09
gb7	gb8 gb9	gb6	gb8	gb3 gb8 gb9	gb1 gb8 gb9	gb2 gb3 gb8	gb9	gb1 gb8

RFT5220040 Forest Floor Palette 5220

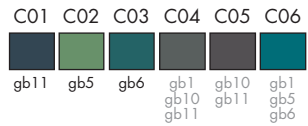


C01	C02	C03	C04	C05
gb7	gb6 gb8 gb9	gb2 gb3 gb6	gb6	gb1 gb2 gb6

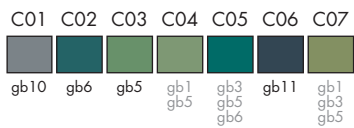
RFT5210062 Canvas Palette 5210



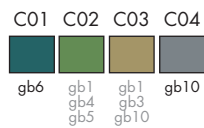
RFT5210063 Canvas Palette 5210



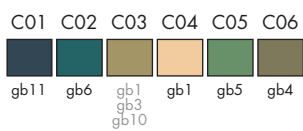
RFT5210060 Thatch Palette 5210



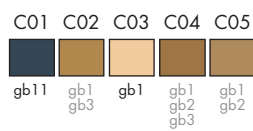
RFT5210040 Forest Floor Palette 5210



RFT5210048 Cortex Palette 5210



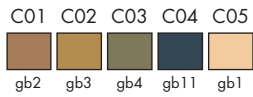
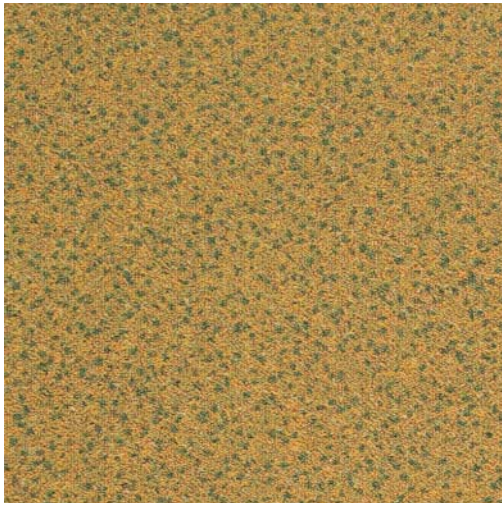
RFT5210061 Canvas Palette 5210



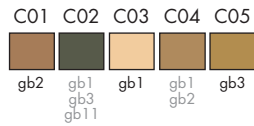
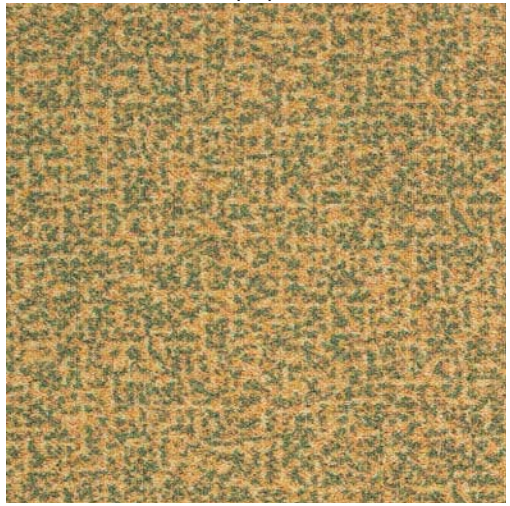


RFT5210061 Canvas
RFT5210065 Canvas

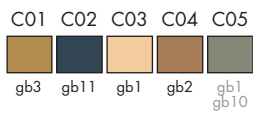
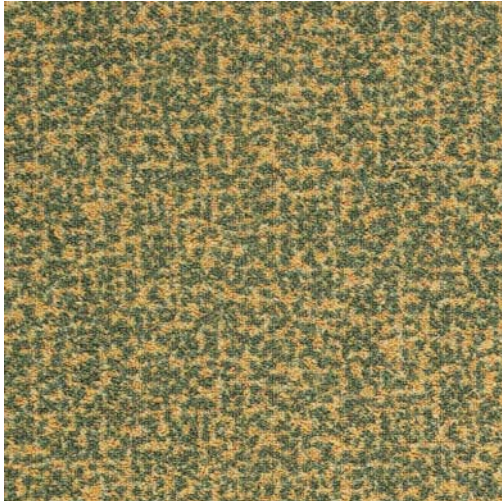
RFT5210037 Forest Floor Palette 5210



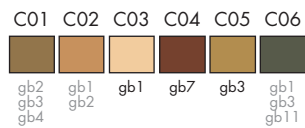
RFT5210049 Wallpaper Palette 5210



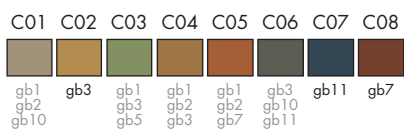
RFT5210050 Wallpaper Palette 5210



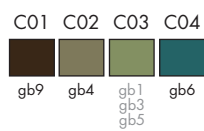
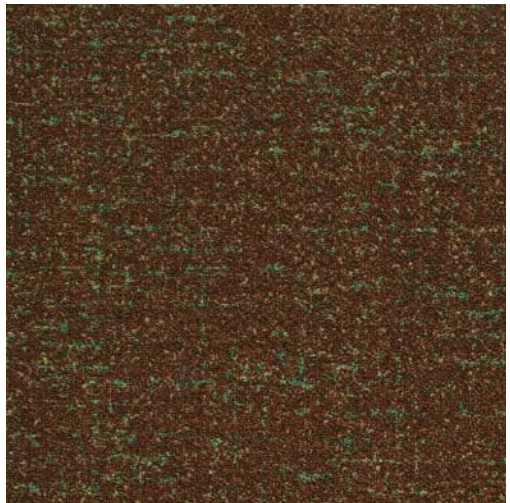
RFT5210041 Terazzo Palette 5210



RFT5210057 Thatch Palette 5210

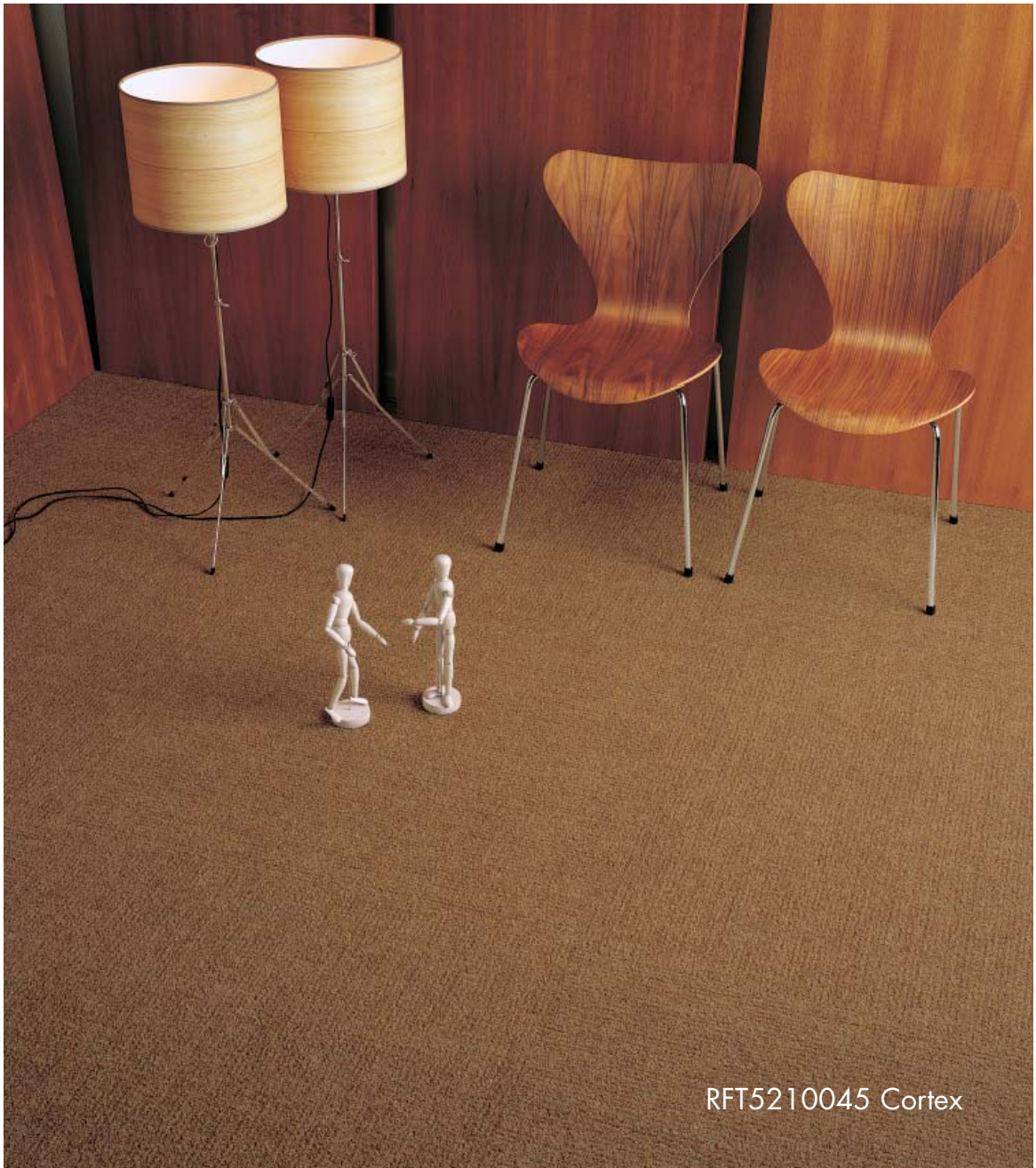


RFT5210055 Tweed Palette 5210





C01	C02	C03	C04	C05	C06	C07	C08
gb1 gb3 gb9	gb2	gb3	gb1 gb2 gb10	gb1 gb2 gb3	gb2 gb3 gb11	gb7	gb1 gb3 gb7



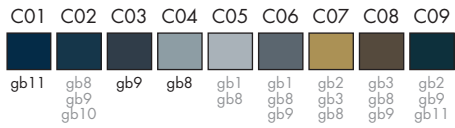
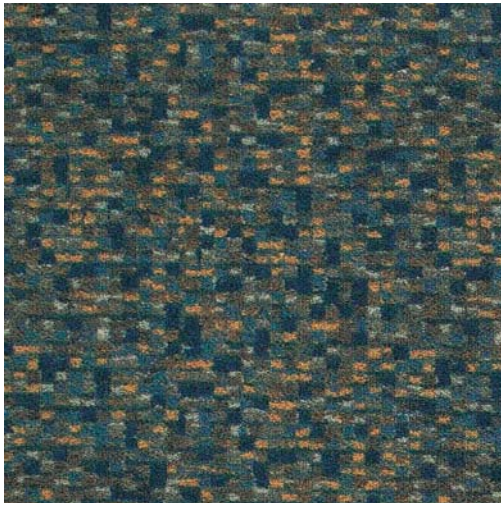
RFT5210045 Cortex



RFT5210053 Tweed
RFT5210056 Tweed

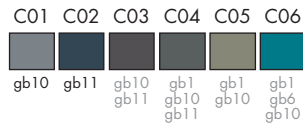
RFT5220064 Pixels

Palette 5220



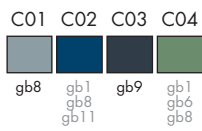
RFT5210064 Canvas

Palette 5210



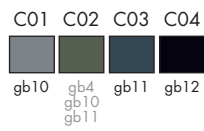
RFT5220053 Tweed

Palette 5220



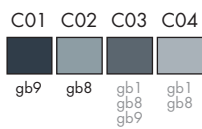
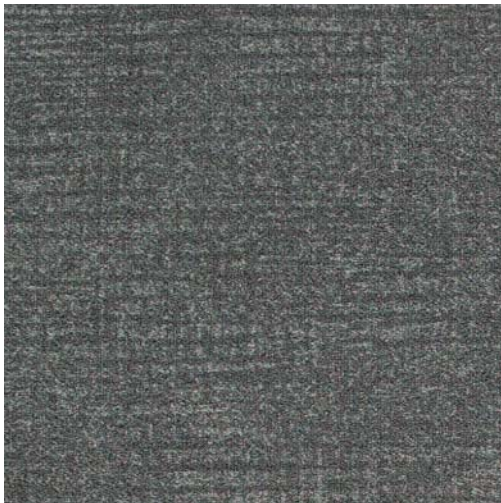
RFT5210053 Tweed

Palette 5210



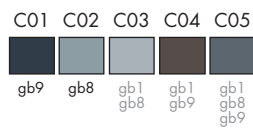
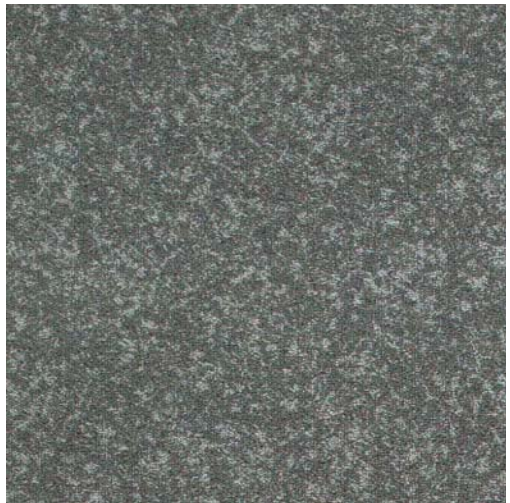
RFT5220057 Thatch

Palette 5220

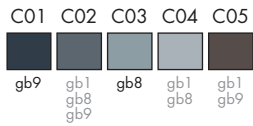
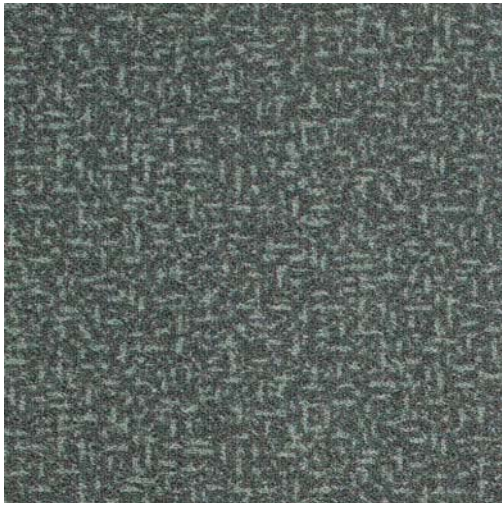


RFT5220041 Terazzo

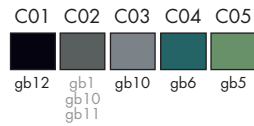
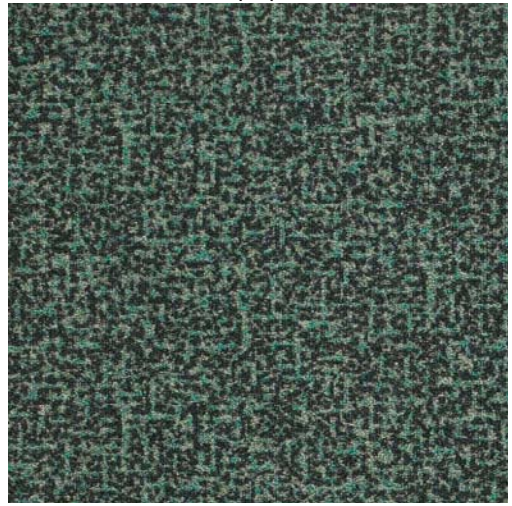
Palette 5220



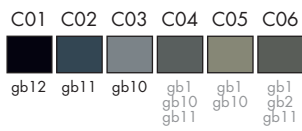
RFT5220049 Wallpaper Palette 5220



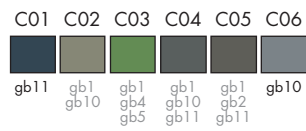
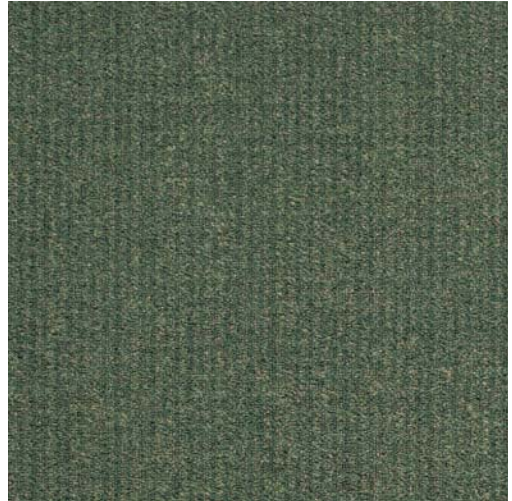
RFT5210051 Wallpaper Palette 5210



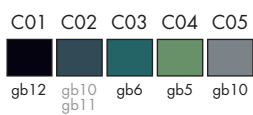
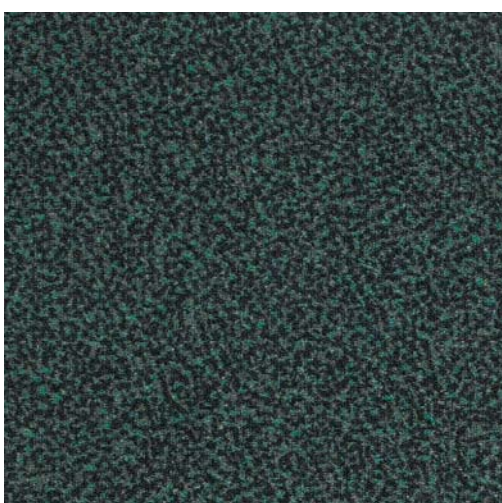
RFT5210047 Cortex



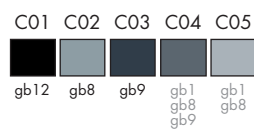
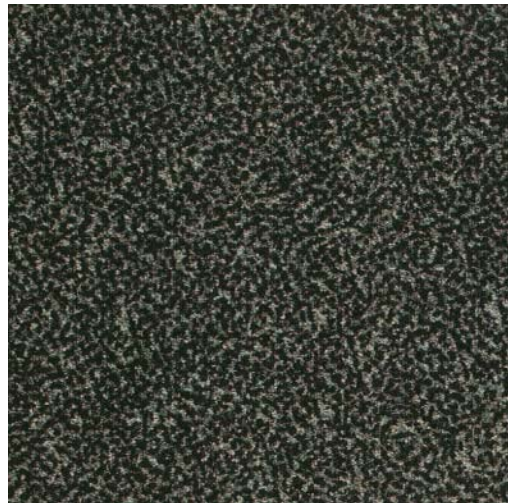
RFT5210046 Cortex Palette 5210



RFT5210038 Forest Floor Palette 5210

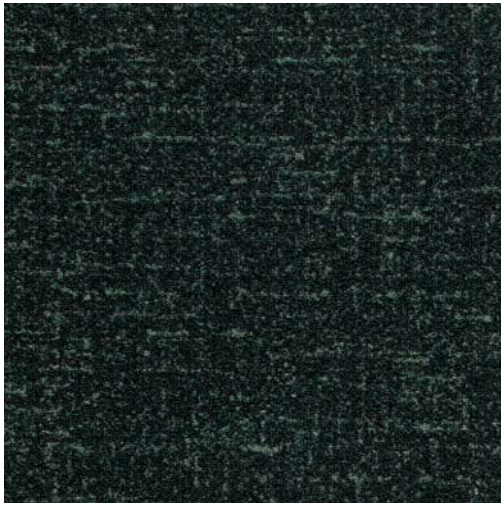


RFT5220037 Forest Floor Palette 5220



RFT5210056 Tweed

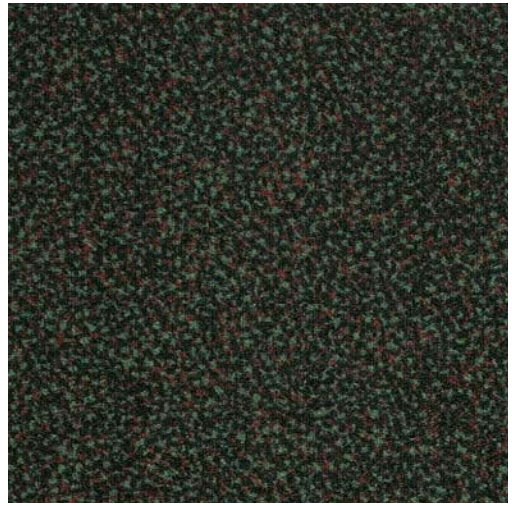
Palette 5210



C01	C02	C03	C04
gb12	gb1 gb10 gb11	gb11	gb1 gb10

RFT5210039 Forest Floor

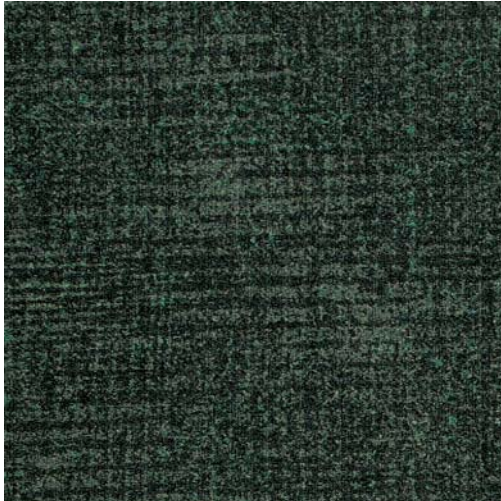
Palette 5210



C01	C02	C03	C04	C05
gb12	gb6 gb8 gb9	gb2 gb3 gb6	gb6	gb1 gb2 gb6

RFT5210058 Thatch

Palette 5210



C01	C02	C03	C04	C05	C06
gb12	gb11	gb1 gb10 gb11	gb6	gb5	gb10 gb11 gb12

RFT5210042 Terazzo

Palette 5210



C01	C02	C03	C04	C05
gb12	gb11	gb1 gb10 gb11	gb1 gb10 gb11	gb3

RFT5210065 Canvas

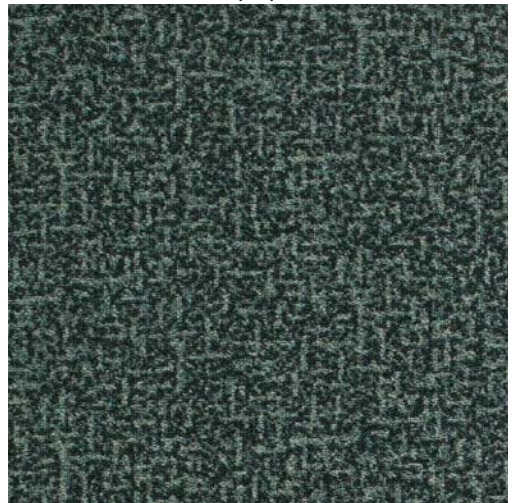
Palette 5210



C01	C02	C03	C04	C05	C06
gb12	gb11	gb1 gb3 gb10	gb1 gb10 gb11	gb10	gb1 gb10

RFT5210052 Wallpaper

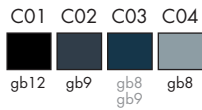
Palette 5210



C01	C02	C03	C04
gb12	gb11	gb10	gb1 gb10 gb11

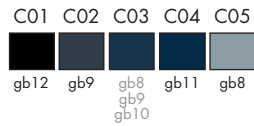
RFT5220060 Thatch

Palette 5220



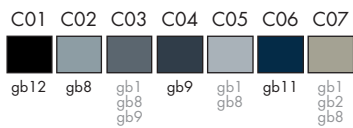
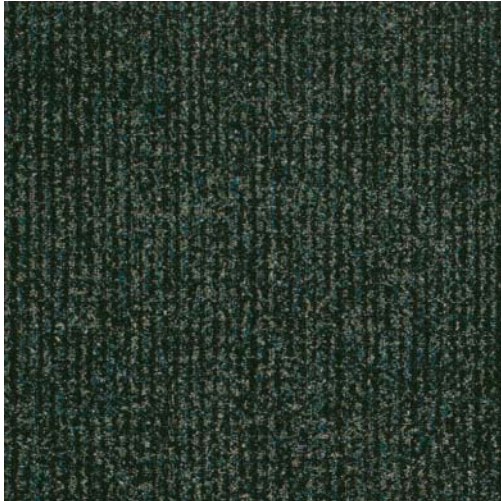
RFT5220059 Thatch

Palette 5220



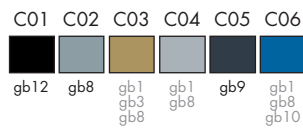
RFT5220048 Cortex

Palette 5220



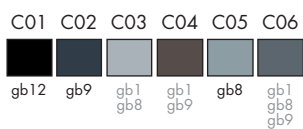
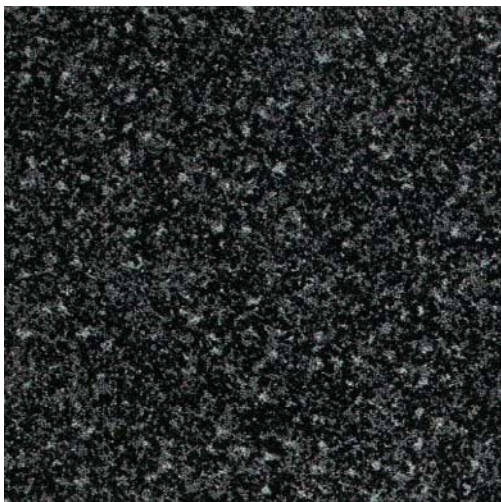
RFT5220061 Canvas

Palette 5220



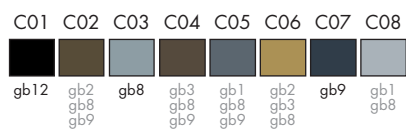
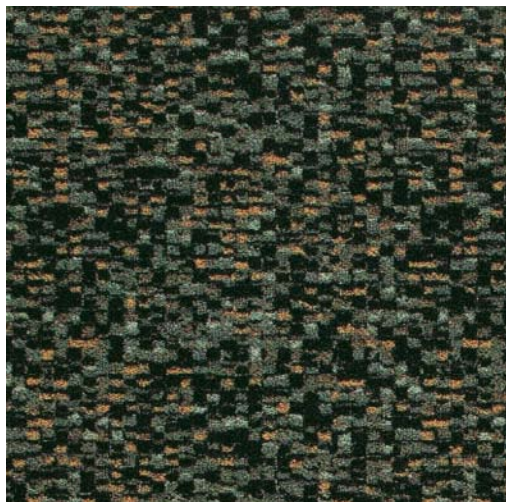
RFT5220042 Terazzo

Palette 5220



RFT5220066 Pixels

Palette 5220





RFT5220066 Pixels
K5220 GB12 Uni

5210 Ground Colours



gb1 / K20020

RF5210001



gb2 / K20021

RF5210002



gb3 / K20022

RF5210003



gb4 / K20023

RF5210004



gb5 / K20024

RF5210005



gb6 / K20025

RF5210006



gb7 / K20026

RF5210007



gb8 / K20027

RF5210008



gb9 / K20028

RF5210009



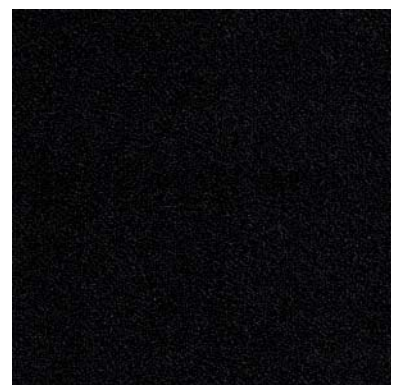
gb10 / K20029

RF5210010



gb11 / K20030

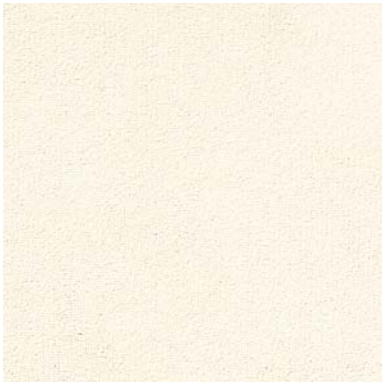
RF5210011



gb12 / K20031

RF5210012

5220 Ground Colours



gb1 / A20041

RF5220001



gb2 / A20042

RF5220002



gb3 / A20043

RF5220003



gb4 / K20044

RF5220004



gb5 / K20045

RF5220005



gb6 / K20046

RF5220006



gb7 / K20047

RF5220007



gb8 / K20048

RF5220008



gb9 / K20049

RF5220009



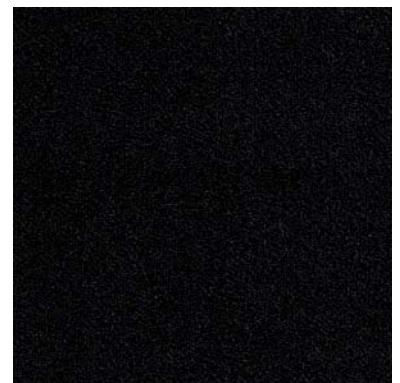
gb10 / K20050

RF5220010



gb11 / K20051

RF5220011



gb12 / K20012

RF5220012

AUSTRIA

Höchsmann (east)
tel.: +43 2236 42746
fax: +43 2236 24807
h.hoechsmann@aon.at

Schiebel (west)
tel.: +43 6212 6974
fax: +43 6212 7795
schiebel@aon.at

BAHRAIN

BFG Commercial Services
tel.: +973 17 741 484
fax: +973 17 741 494
bfgcomm@batelco.com.bh

BELGIUM/LUXEMBOURG

Intercovering NV
tel.: +32 3 459 8538
fax: +32 3 459 8540
annevanderroost@intercovering.com

BOSNIA - HERZEGOVINA

Flooring d.o.o.
tel.: +387 (0)51 32 47 70
fax: +387 (0)51 32 47 71
sukale@inecco.net

BULGARIA

City Design Centre
tel.: +359 2 953 15 15
fax: +359 2 953 10 28
info@citydesigncentre.com

CANADA

Tappatec Inc.
tel.: +1 905 279 8882
fax: +1 905 279 0889
tappatec@sympatico.ca

CYPRUS

N&S Syrimis Contracts Ltd.
tel.: +357 2244 2243
fax: +357 2231 3399
syrimis.contracts@cytanet.com.cy

CZECH REPUBLIC

Optimal Servis Centrum s.r.o.
tel.: +420 2 8384 1565-6
fax: +420 2 8384 3180
info@optimal-servis.cz

DENMARK CONTRACT

ege contract a/s
tel.: +45 86 21 00 00
fax: +45 86 21 50 77
egecontract@ege.dk

ESTONIA

AS Lincona Konsult
tel.: +372 6 103 750
fax: +372 6 103 751
lincona@lincona.ee

FINLAND

OY Orient Occident Ltd.
tel.: +358 9 260 660
fax: +358 9 801 1227
floors2@orientoccident.fi

FRANCE

egetaepper france e.u.r.l.
tel.: +33 1 6912 3939
fax: +33 1 6912 3930
france@egecarpet.com

GERMANY

egetaepper (Deutschland)GmbH
tel.: +49 221- 969 727-0
fax: +49 221- 969 727-24
deutschland@egecarpet.com

GREECE

Wefi Print Hellas SA
tel.: +30 210 6100 797
fax: +30 210 6100 798
dimitri@wphellas.gr

HUNGARY

Top Trade Export-Import KFT.
tel.: +361 221 8926
fax: +361 383 2935
top.trade@mail.datanet.hu

INDIA

Applause Carpets
tel.: +91 11 2685 1400
fax: +91 11 2651 6160
apca@del2.vsnl.net.in

IRAN

Tarani Tecnical & Trading
tel.: +98 21 871 1613 & 14
+98 21 871 9612 & 13
fax: +98 21 872 8030
info@taranico.com

IRELAND

Provincial Floorcoverings Ltd.
tel.: +353 1 62 63 913
fax: +353 1 62 63 960

ITALY

Giovanni Comoletti
tel.: +39 0163 54444
fax: +39 0163 54433
comoletti@tin.it

KENYA

Spiegel Ltd.
tel.: +254 2 376 27 62
fax: +254 2 376 16 77
spiegel@accesskenya.com

KUWAIT

Ajal Contracting & General Trading Co.
tel.: +965 2427773
fax: +965 2423578
ajal@qualitynet.net

LATVIA

Baltiijas Gridu serviss sia
tel.: +371 7 063 780
fax: +370 7 063 781
bgs@actek.lv

LEBANON

Pictura SAL
tel./fax: +961 1 500 465
info@sommerlb.com

LITHUANIA

Ogrinda
tel.: +370 5 27 23 822
fax: +370 5 27 57 470
ogrinda.floor@takas.lt

MALTA

Better Living Centre
tel.: +356 21 695 601/2
fax: +356 21 661 029
info@betterlivingcentre.com

NETHERLANDS

Onstein Textiel Agenturen
tel.: +31 35 62 37 337
fax: +31 35 62 84 950
guytex@knoware.nl

NEW ZEALAND

Anthéz Projects Ltd.
tel.: +64 9 425 4561
fax: +64 9 425 4581
info@egecarpet.co.nz

NORWAY

egetaepper norge a/s
tel.: +47 22 51 63 00
fax: +47 22 51 63 01
norge@egecarpet.com

OMAN

Alasfoor Furnishing LLC
tel.: +968 561 400
fax: +968 562 377
alafoco@omantel.net.om
alafurc@omantel.net.om

PAKISTAN

Seenqaaf Industrial Co.
tel.: +92 21 4522 485
fax: +92 21 4314 726
seenqaaf@cyber.net.pk

POLAND

Polmaster Co. Ltd.
tel.: +48 22 632 36 69
fax: +48 22 632 54 57
polmaster@polmaster.com.pl

Topwert Swiat Dywanow Sp. z.o.o.

tel.: +48 22 720 47 85
fax: +48 22 720 47 89

PORTUGAL

Decorpisus-Decorações Lda.
tel.: +351 21 454 81 60
fax: +351 21 454 81 69
decorpisus@netcabo.pt

P.R. CHINA - SHANGHAI

Trayton Trading
tel.: +86 21 6207 6767
fax: +86 21 6207 6750
mail@trayton.com

QATAR

Jameel Showroom
tel.: +974 4650101
fax: +974 4653777
aljameel@qatar.net.qa

RUSSIA

Ortgraph
tel.: +7 095 725-7844
fax: +7 095 725-7846
ortgraph@dol.ru

Brandi & Schnipper
tel.: +7 095 785 4000
fax: +7 095 785 4005
info@schnipper.ru

SERBIA AND MONTENEGRO

ITG d.o.o.
tel.: +381 11 632 787
fax: +381 11 186 460
itg.sr@eunet.yu

SINGAPORE

AlphaPac Connections
tel.: +65 9739 7097
fax: +65 6353 6483
haimengt@singnet.com.sg

SLOVAKIA

NOREM s.r.o.
tel.: +421 2 52 961 608
fax: +421 2 52 961 437
norem@gtinet.sk

SLOVENIA

Flooring d.o.o.
tel.: +386 1 500 5330
fax: +386 1 500 5360
info@flooring.si

SPAIN

Ibermoqueta ege, S.L.
tel.: +34 91 651 1121/651 1399
fax: +34 91 651 3305
ege@ibermoqueta.com

SWEDEN

egetaepper sverige ab
tel.: +46 31 778 0050
fax: +46 31 778 1350
sverige@egecarpet.com

SWITZERLAND

Karl Schubiger - Textilagentur (east)
tel.: +41 079-419 58 50
fax: +41 01-941 41 05
ksc@egecarpet.com

Hans-Peter Imhof - ITEX Textilagentur (west)

tel.: +41 079-661 64 78
fax: +41 01-761 11 51
hpi@egecarpet.com

TURKEY

Integro Flooring
tel.: +90 212 327 33 33
fax: +90 212 327 88 57
info@integroflooring.com

UKRAINE

Stek
tel.: +380 44 2570074
fax: +380 44 2580155
import@stek.kiev.ua

Thermostrip

tel.: +380 44 49 40 095
fax: +380 44 49 40 096
t-strip@i.kiev.ua

UNITED ARAB EMIRATES

Gemaco Interiors
Abu Dhabi
tel.: +971 2 633 9100
fax: +971 2 633 9200

Dubai

tel.: +971 4 338 9500
fax: +971 4 338 9995
info@gemaco-uae.com

UNITED KINGDOM

ege carpets limited
tel.: +44 1257 239 000
fax: +44 1257 239 001
uk@egecarpet.com



Leverandør til det Kgl. Danske Hof
Purveyors to The Royal Danish Court

Head Office

egetæpper a/s • Industrivej Nord 25 • DK-7400 Herning • Tel. +45 97 11 88 11 • Fax: +45 97 11 95 80 • E-mail: ege@ege.dk • www.egecarpet.com