



ASPECTA[®]
ONE

A NEW DIMENSION IN FLOORING

ASPECTA® ONE
A NEW DIMENSION IN FLOORING

THE NEXT CHAPTER

Introducing Aspecta® ONE, the latest range of innovative and exciting flooring designs from the specialists in LVT. With years of experience in the industry, we're committed to growing and improving the options available to our customers.

Aspecta ONE consists of 46 trendsetting tiles and planks, with colors to suit every type of space. Our range of embosses create authentic, eye-catching textures that enhance the natural details of the designs.

Aspecta ONE is joining two other incredible collections in our range: Aspecta FIVE and Aspecta TEN.

Discover them all at aspectaflooring.com



DRYBACK

22mil (0.55mm) wear layer
46 colors

Recommended for Healthcare, Education,
Hospitality, Retail and Corporate.



DRYBACK

28mil (0.7mm) wear layer
109 colors

Recommended for Healthcare, Transportation,
Education, Hospitality, Retail, Light Industrial,
Corporate and any area with heavy duty requirements.



Featuring  ISOCORE Technology®

CLICK-System

28mil (0.7mm) wear layer
ISOCORE Technology®
34 colors

Recommended for Healthcare, Education, Hospitality,
Retail and Corporate. Because of its multi-layer
construction, it is especially recommended for
hotels, schools, offices and renovation projects.





WOODS

A RANGE OF 24 PLANKS



STONE & MASONRY

A RANGE OF 22 TILES



WOODS

Aspecta® ONE boasts an eclectic and intriguing collection of stunning wood designs for every environment.

Our extensive range of embosses enhance the finer details of the wood grain with a soft and subtle elegance, and are matched beautifully with our full selection of inspiring colors. From bright, uplifting hues to rich, warming tones, you're sure to find a color to suit your project.

Planks are available in 9" x 60"/228.6mm x 1524mm and 7.87" x 48.11"/200mm x 1222mm for your convenience.



LOFT WOOD

Crafted from robust pinewood, this flooring design is available in a stunning range of natural grey tones. It creates a distressed, industrial effect that would be perfect for converted living spaces.

Size: 9" x 60"/228.6mm x 1524mm
Edge Detail: Micro Bevel
Emboss: Barnside



LOFT WOOD - COLOR: ALTO - PATTERN# 1404264



LOFT WOOD - COLOR: STRATUS - PATTERN# 1404263



LOFT WOOD - COLOR: CIRRO - PATTERN# 1404262

Traditionally used as a veneer or furniture wood, this Cherry wood floor is a rare and unusual addition to any space. Here, we have used the raw, untreated wood to create a design with unexpected charm.

Size: 9” x 60”/228.6mm x 1524mm
Edge Detail: Micro Bevel
Emboss: Natural Timber



COVENTRY – COLOR: ROCK – PATTERN# 1403726



COVENTRY – COLOR: ALDABRA – PATTERN# 1403724



COVENTRY – COLOR: SIPYRS – PATTERN# 1403721





This wood design gives an aged effect as if it once belonged to an old town hall. Even after years of slowly drying and aging, the wood retains its original look and shine.

Size: 9" x 60"/228.6mm x 1524mm
Edge Detail: Micro Bevel
Emboss: Barnside

DOCKSIDE



DOCKSIDE - COLOR: DEPTFORD - PATTERN# 1412916



DOCKSIDE - COLOR: HALIFAX - PATTERN# 1412917



SHIPWRIGHT

Oak, a firm favourite across the construction and interior design industries for premium quality, is given a rustic yet modern twist. Wood imperfections along with cutting and planing marks are accented with a sophisticated in-register emboss.

Size: 7.87" x 48.11"/200mm x 1222mm
Edge Detail: Square
Emboss: In-Register



SHIPWRIGHT – COLOR: PIONEER – PATTERN# 1329418



SHIPWRIGHT – COLOR: ROSEWAY – PATTERN# 1329417



SHIPWRIGHT – COLOR: DANZIG – PATTERN# 1329411



SHIPWRIGHT – COLOR: LYNX – PATTERN# 1329416



SHIPWRIGHT – COLOR: MONARCH – PATTERN# 1329415



SHIPWRIGHT – COLOR: BOUNTY – PATTERN# 1329414

This washed wood design is reminiscent of the limed wood beams of worn, rugged agricultural barns. Authentic marks and grooves from farming tools and equipment give a stunning visual effect.

Size: 7.87" x 48.11"/200mm x 1222mm
Edge Detail: Square
Emboss: Barnside



WASHED WOOD – COLOR: LIGHT – PATTERN# 1326817



WASHED WOOD – COLOR: MIDNIGHT – PATTERN# 1326816



WASHED WOOD – COLOR: ARCTIC – PATTERN# 1326819



ALPINE RIDGE

The characteristics of this wood tell a beautiful story through its lightly faded, worn and weathered details. Naturally altered by rain, hail, storm and sunshine, it has gained new life with this enchanting design.

Size: 7.87" x 48.11"/200mm x 1222mm
Edge Detail: Square
Emboss: Sawcut



ALPINE RIDGE - COLOR: PUMICE - PATTERN# 1328511



ALPINE RIDGE - COLOR: LAVA - PATTERN# 1328516



ALPINE RIDGE - COLOR: MICA - PATTERN# 1328519



INTRODUCING NEW
PATTERNED FLOORS.
BRING YOUR PROJECT
TO LIFE.

Create stunning visual effects with Aspecta’s® Patterned Flooring range. This new plank size enables you to express your creativity with a choice of five alluring pattern styles to add an intriguing detail to any space.

Our Patterned Flooring comes in eight striking wood colors from the Aspecta ONE range, across our Shipwright, Washed Wood and Alpine Ridge collections.

The elements are available in **4” x 24”/101.6mm x 609.6mm**, and can be arranged in a number of bold and interesting ways. The beveled edges on all 4 sides further emphasize the stunning pattern effect.



WASHED WOOD- COLOR: ARCTIC – PATTERN# 1126819



ALPINE RIDGE – COLOR: MICA – PATTERN# 1128519



ALPINE RIDGE – COLOR: MOONSTONE – PATTERN# 1128510



WASHED WOOD – COLOR: MIDNIGHT – PATTERN# 1126816



SHIPWRIGHT- COLOR: MONARCH – PATTERN# 1129415



SHIPWRIGHT – COLOR: DANZIG – PATTERN# 1129411



SHIPWRIGHT – COLOR: ROSEWAY – PATTERN# 1129417



SHIPWRIGHT- COLOR: PIONEER – PATTERN# 1129418

DESIGN EXAMPLES FOR PATTERNED FLOORING



CHECKER BLOCK



RANDOM STRIPE



SINGLE HERRINGBONE



WICKET



TRIPLE HERRINGBONE

WOODS

Our planks boast an eclectic and intriguing collection of stunning wood designs for every environment. From bright, uplifting hues to rich, warming tones, you’re sure to find a color to suit your project.

Planks are available in 9” x 60”/228.6mm x 1524mm and 7.87” x 48.11”/200mm x 1222mm for your convenience.



WASHED WOOD – COLOR: MIDNIGHT* – PATTERN# 1326816



ALPINE RIDGE- COLOR: PUMICE – PATTERN# 1328511



COVENTRY – COLOR: ROCK – PATTERN# 1403726



LOFT WOOD – COLOR: NIMBO – PATTERN# 1404269



ALPINE RIDGE – COLOR: LAVA – PATTERN# 1328516



SHIPWRIGHT – COLOR: PIONEER* – PATTERN# 1329418



ALPINE RIDGE – COLOR: MOONSTONE* – PATTERN# 1328510



SHIPWRIGHT- COLOR: ROSEWAY*- PATTERN# 1329417



COVENTRY – COLOR: PHOENIX – PATTERN# 1403727



DOCKSIDE – COLOR: DEPTFORD – PATTERN# 1412916



SHIPWRIGHT – COLOR: LYNX – PATTERN# 1329416



SHIPWRIGHT – COLOR: DANZIG* – PATTERN# 1329411

*Also available in Patterned Flooring. Please refer to pages 24-25 for dedicated pattern numbers.



SHIPWRIGHT – COLOR: BOUNTY – PATTERN# 1329414



SHIPWRIGHT- COLOR: MONARCH* – PATTERN# 1329415



LOFT WOOD – COLOR: ALTO – PATTERN# 1404264



LOFT WOOD – COLOR: STRATUS – PATTERN# 1404263



ALPINE RIDGE – COLOR: MICA* – PATTERN# 1328519



COVENTRY – COLOR: ALDABRA – PATTERN# 1403724



DOCKSIDE – COLOR: HAMILTON – PATTERN# 1412914



LOFT WOOD – COLOR: CIRRO – PATTERN# 1404262



DOCKSIDE – COLOR: HALIFAX – PATTERN# 1412917



WASHED WOOD – COLOR: LIGHT – PATTERN# 1326817

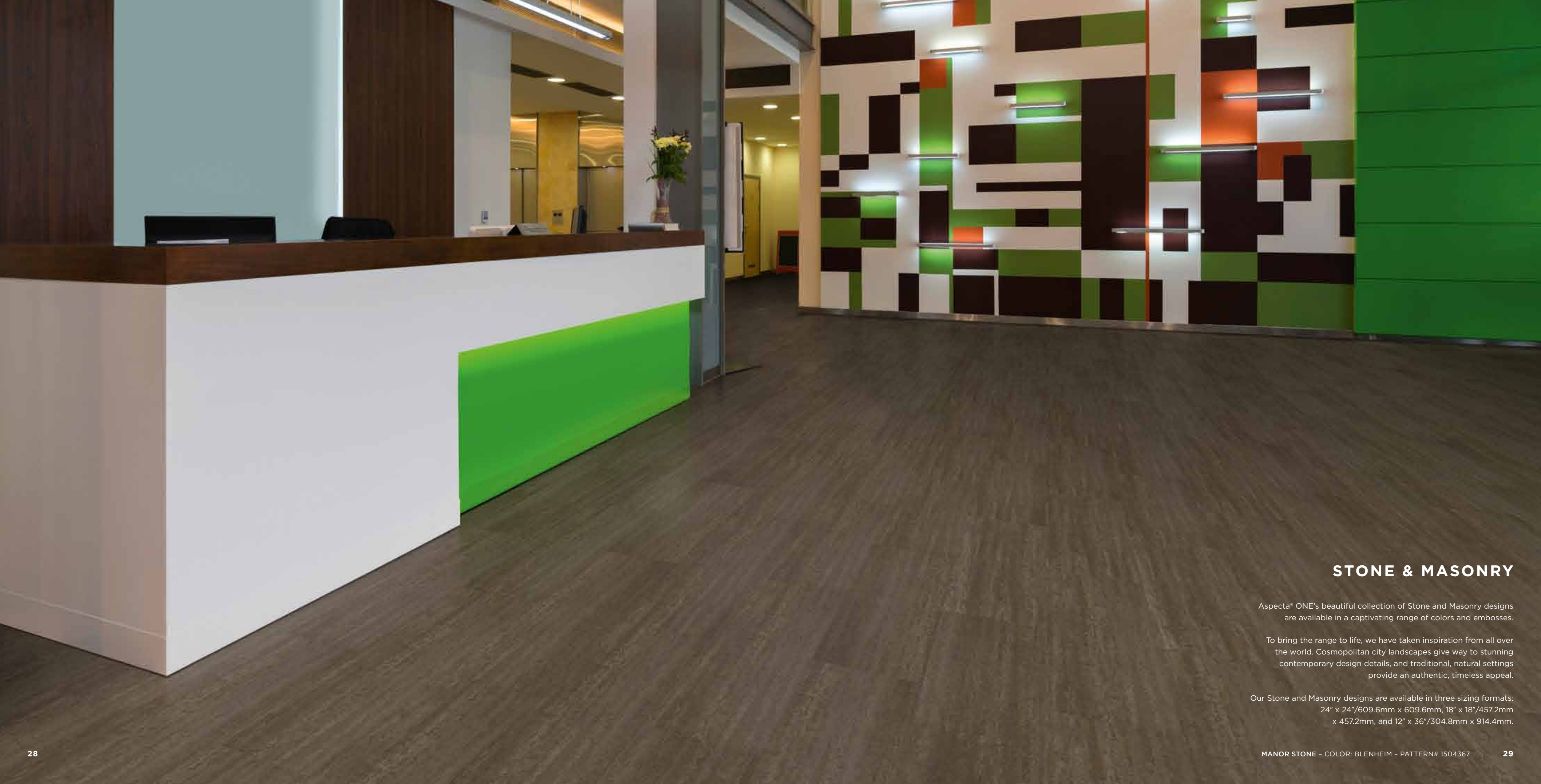


WASHED WOOD – COLOR: ARCTIC* – PATTERN# 1326819



COVENTRY – COLOR: SIPYRS – PATTERN# 1403721

Pictures are for reference only. Please order samples to experience the full color and texture.

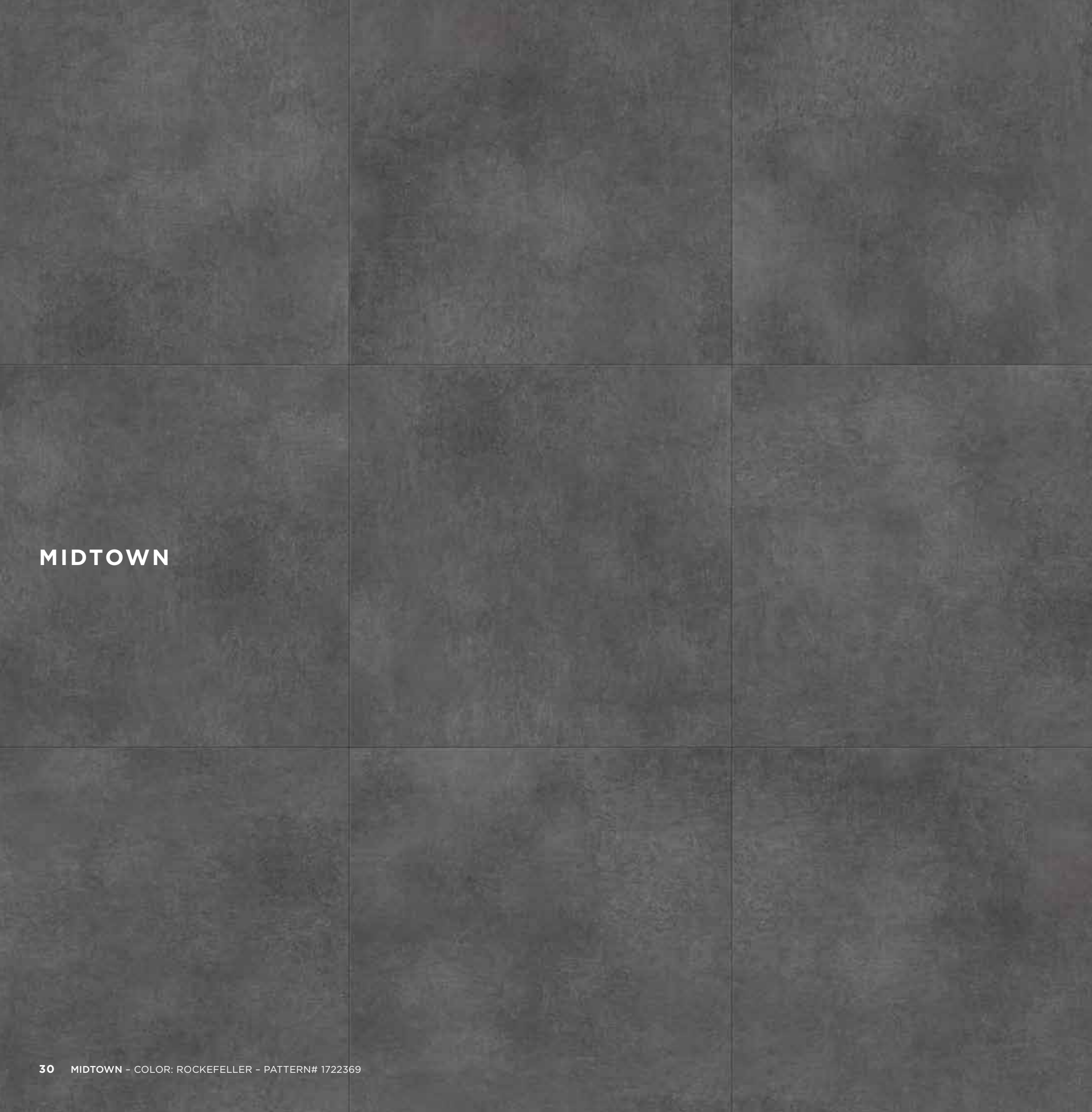


STONE & MASONRY

Aspecta® ONE's beautiful collection of Stone and Masonry designs are available in a captivating range of colors and embosses.

To bring the range to life, we have taken inspiration from all over the world. Cosmopolitan city landscapes give way to stunning contemporary design details, and traditional, natural settings provide an authentic, timeless appeal.

Our Stone and Masonry designs are available in three sizing formats:
24" x 24"/609.6mm x 609.6mm, 18" x 18"/457.2mm x 457.2mm, and 12" x 36"/304.8mm x 914.4mm.



MIDTOWN

This authentic, rough concrete features traces of the production process including wood imprints, drying pores and slight chalk efflorescence. The emboss, especially developed for this design, reflects and emphasizes these details in a stylishly subtle way.

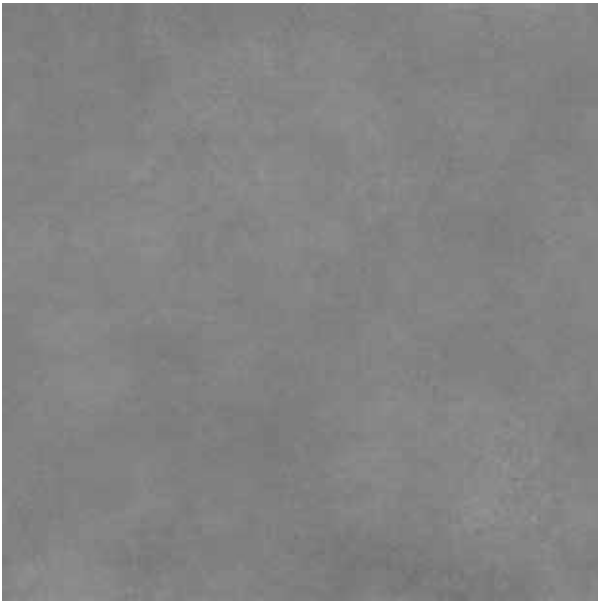
Size: 24" x 24"/609.6mm x 609.6mm
Edge Detail: Square
Emboss: Textured Concrete



MIDTOWN - COLOR: BROWNSTONE - PATTERN# 1722364



MIDTOWN - COLOR: GRACE - PATTERN# 1722360



MIDTOWN - COLOR: EMPIRE - PATTERN# 1722367



MIDTOWN - COLOR: FLATIRON - PATTERN# 1722362



MIDTOWN - COLOR: GRAMERCY - PATTERN# 1722361



MIDTOWN PRISM

Similar to our Midtown design, this flooring consists of 6 on-trend colors, collected from cities all around the world. It can be used as a bold, singular color statement, or together to create a multi-colored effect.

Size: 24” x 24”/609.6mm x 609.6mm
Edge Detail: Square
Emboss: Textured Concrete



MIDTOWN PRISM – COLOR: RED – PATTERN# 17223621



MIDTOWN PRISM – COLOR: ORANGE – PATTERN# 17223620



MIDTOWN PRISM – COLOR: YELLOW – PATTERN# 17223619



MIDTOWN PRISM – COLOR: BLUE – PATTERN# 17223623



MIDTOWN PRISM – COLOR: GREEN – PATTERN# 17223618



At first glance, this ancient stone effect is reminiscent of rich marble or sand stone. On closer inspection, the intricate bark details really come into view. A perfect fusion of stone and wood goes to create a truly unusual design.

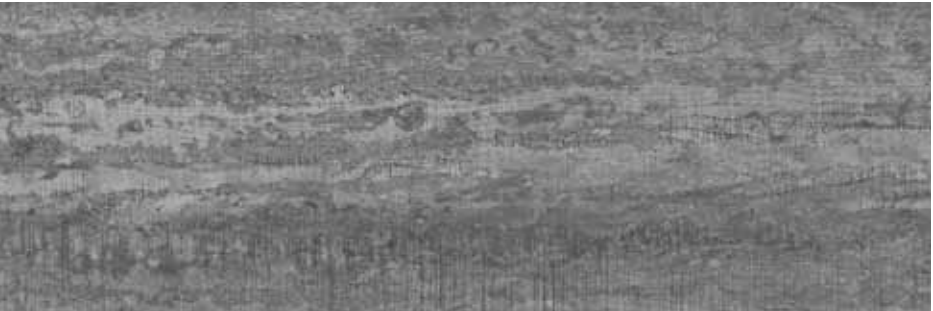
Size: 12" x 36"/304.8mm x 914.4mm
Edge Detail: Micro Bevel
Emboss: Satin



MANOR STONE - COLOR: BLENHEIM - PATTERN# 1504367



MANOR STONE - COLOR: WOBURN - PATTERN# 1504365



MANOR STONE - COLOR: LYME PARK - PATTERN# 1504361



MANOR STONE - COLOR: HARDWICK - PATTERN# 1504369



MANOR STONE - COLOR: CHATSWORTH - PATTERN# 1504362



MANOR STONE - COLOR: HOWARD - PATTERN# 1504364





HIGHLAND STEP

A ceramic flooring effect with the perfect balance of clay, quartz and oxides to create this beautifully modern design. Glaze details add a new dimension to this flooring, making it truly stand out.

Size: 18" x 18"/457.2mm x 457.2mm
Edge Detail: Micro Bevel
Emboss: Satin



HIGHLAND STEP - COLOR: DUBH - PATTERN# 1912171



HIGHLAND STEP - COLOR: RUADH - PATTERN# 1912179



HIGHLAND STEP - COLOR: LIATH - PATTERN# 1912172

STONE & MASONRY

Our beautiful collection of Stone and Masonry designs are available in a captivating range of colors and embosses, created using inspiration from all over the world.

Our Stone and Masonry designs are available in three sizing formats: 24" x 24"/609.6mm x 609.6mm, 18" x 18"/457.2mm x 457.2mm, and 12" x 36"/304.8mm x 914.4mm.



MANOR STONE - COLOR: BLENHEIM - PATTERN# 1504367



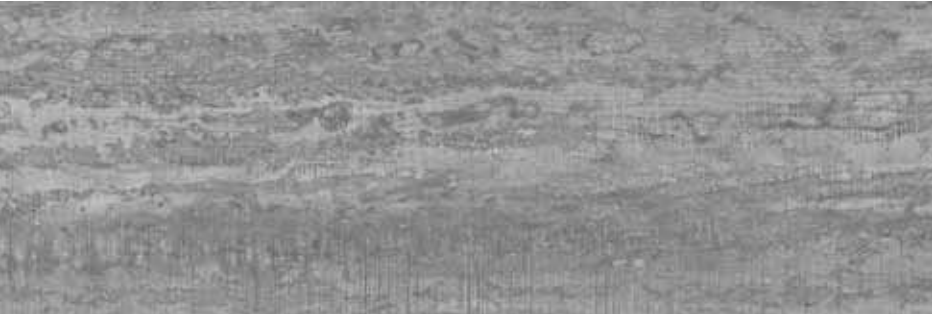
MANOR STONE - COLOR: WOBURN - PATTERN# 1504365



MANOR STONE - COLOR: LYME PARK - PATTERN# 1504361



MANOR STONE - COLOR: HOWARD - PATTERN# 1504364



MANOR STONE - COLOR: HARDWICK - PATTERN# 1504369



MANOR STONE - COLOR: CHATSWORTH - PATTERN# 1504362



HIGHLAND STEP - COLOR: DUBH - PATTERN# 1912171



HIGHLAND STEP - COLOR: RUADH - PATTERN# 1912179



MIDTOWN - COLOR: FLATIRON - PATTERN# 1722362



MIDTOWN PRISM - COLOR: PLUM - PATTERN# 17223622



MIDTOWN - COLOR: ROCKEFELLER - PATTERN# 1722369



MIDTOWN - COLOR: BROWNSTONE - PATTERN# 1722364



MIDTOWN - COLOR: GRAMERCY - PATTERN# 1722361



MIDTOWN PRISM - COLOR: RED - PATTERN# 17223621



HIGHLAND STEP - COLOR: DONN - PATTERN# 1912175



MIDTOWN - COLOR: GRACE - PATTERN# 1722360



MIDTOWN PRISM - COLOR: BLUE - PATTERN# 17223623



MIDTOWN PRISM - COLOR: ORANGE - PATTERN# 17223620



MIDTOWN - COLOR: EMPIRE - PATTERN# 1722367



HIGHLAND STEP - COLOR: LIATH - PATTERN# 1912172



MIDTOWN PRISM - COLOR: GREEN - PATTERN# 17223618



MIDTOWN PRISM - COLOR: YELLOW - PATTERN# 17223619

EMBOSS

Discover Aspecta® ONE's beautiful collection of in-register and specially designed Wood embosses. The Tile collection boasts an exclusive range of embossing techniques, including Textured Concrete and Satin.

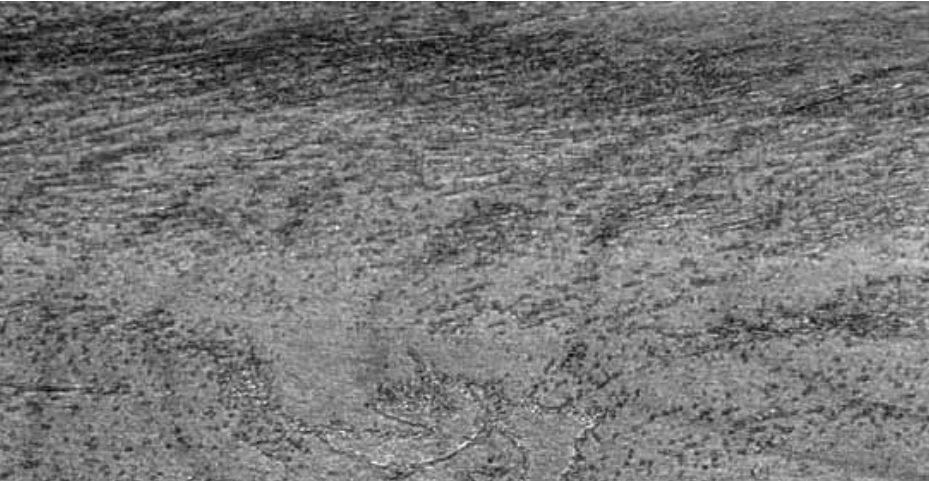
WOODS



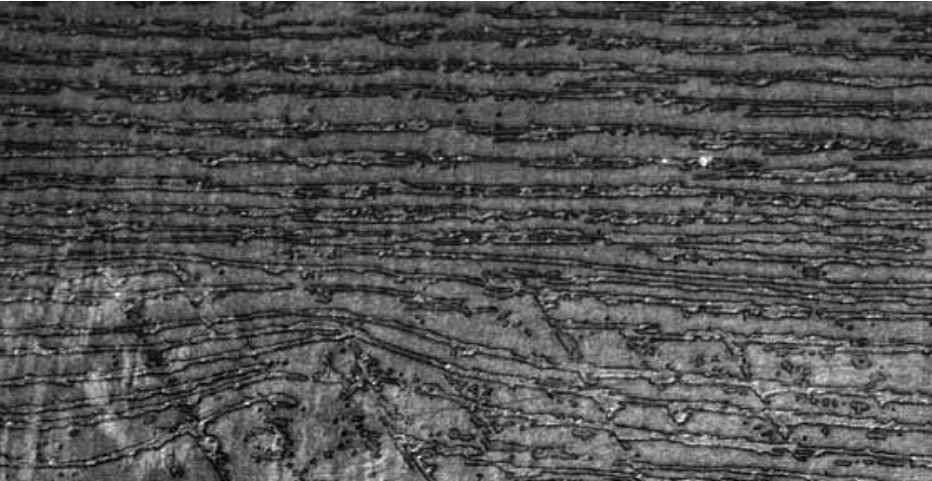
BARNSIDE - The relief-like surface image of Barnside reflects natural aged wooden planks and gives rustic wood interiors a truly authentic finish.



IN REGISTER SHIPWRIGHT - This beautiful oak is straight-grown and virtually knotless, with only slight imperfections as well as cutting and planing marks reflected in its surface.



NATURAL TIMBER - The richly varied pore course of minimally treated precious wood gives Natural Timber its unique unpretentious earthy finish.

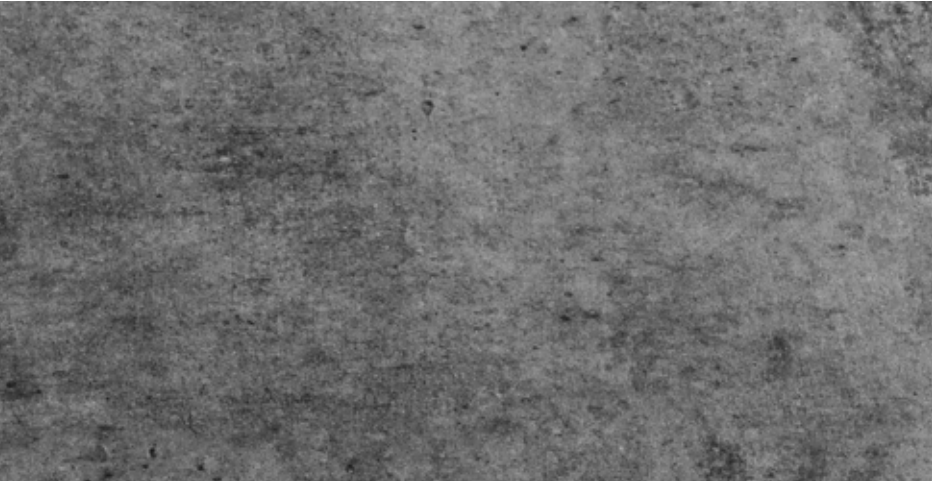


SAWCUT - Unplaned and unpolished, Sawcut is construction timber cut directly from tree trunks, with sawing marks and sawdust intact. This gives this wood unmatched character and authenticity.

STONE AND MASONRY



TEXTURED CONCRETE - With its rough texture, this freshly dried industrial concrete shows traces of the preparation process, such as drying pores and the beat trace of smoothing tools. Perfect for adding an industrial feel to any setting.

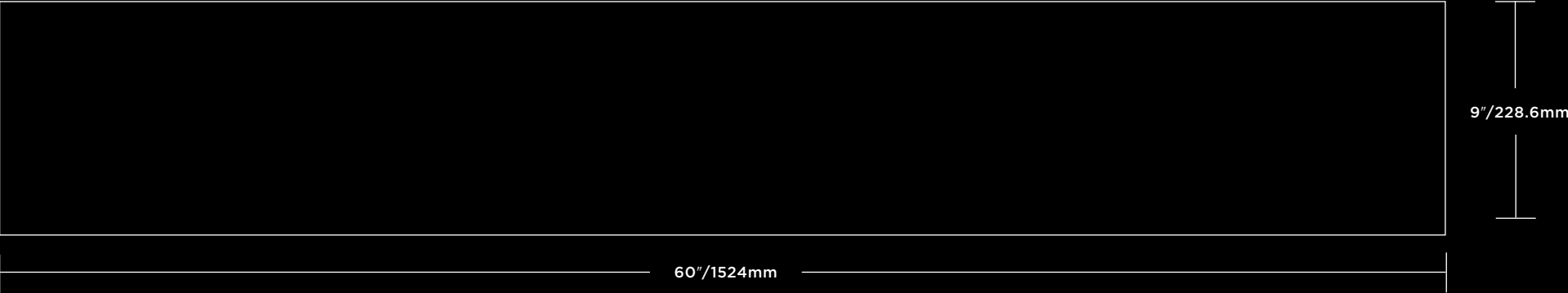


SATIN - The regular, subtle fine structure creates the noble tile image of Satin and gives a stunning natural light refraction.

TECHNICAL DETAILS

Aspecta® ONE Planks and Tiles are available in a wide range of sizes:

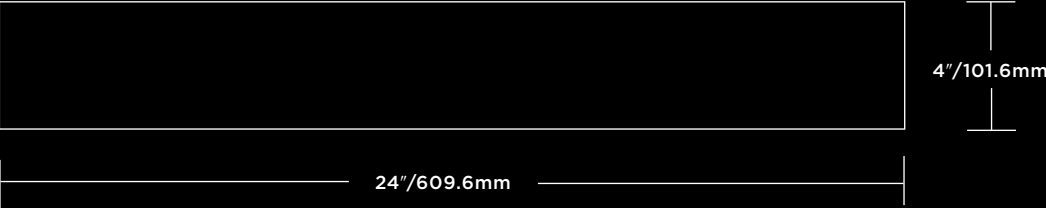
PLANK



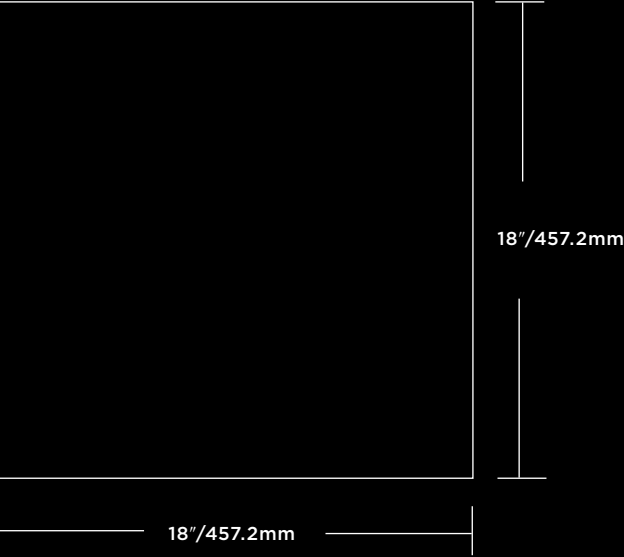
PLANK



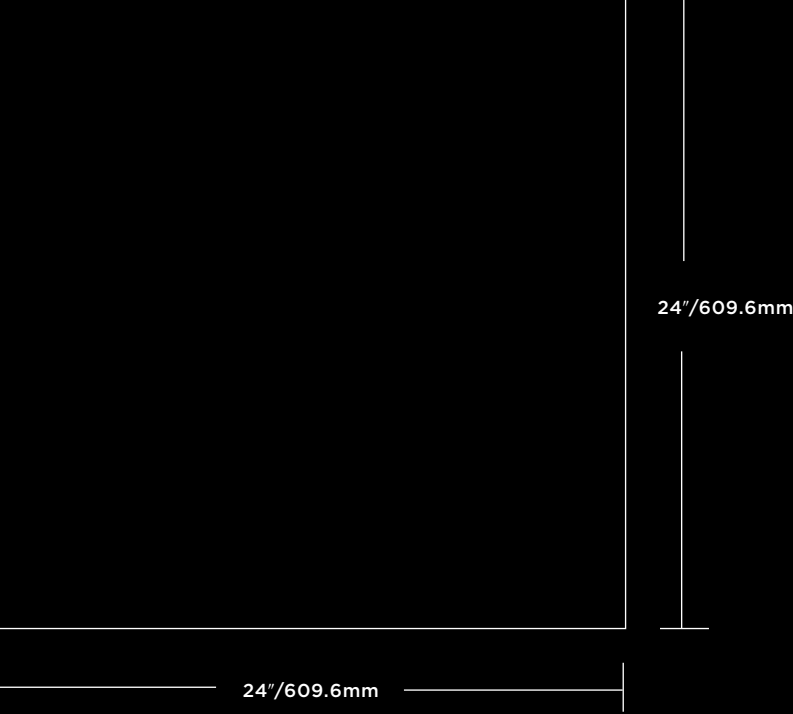
PATTERNED FLOORING



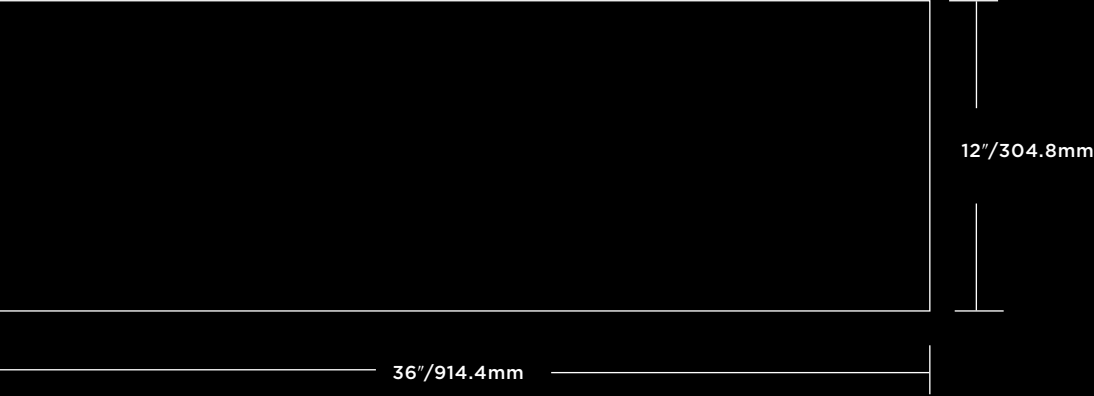
TILE



TILE














TILE








TECHNICAL DATA SHEET







PHYSICAL PROPERTIES & PACKAGING - PLANK (DRYBACK 2.5MM/0.55MM)			
Size	101.6mm x 609.6mm (4" x 24")	200mm x 1222mm (7.87" x 48.11")	228.6mm x 1524mm (9" x 60")
Construction	Solid Vinyl Tile/LVT	Solid Vinyl Tile/LVT	Solid Vinyl Tile/LVT
Use	Commercial	Commercial	Commercial
Wear Layer	0.55mm (22 mil)	0.55mm (22 mil)	0.55mm (22 mil)
Finish	Urethane Coating with Ceramic Bead Particles	Urethane Coating with Ceramic Bead Particles	Urethane Coating with Ceramic Bead Particles
Thickness	2.5mm (0.098")	2.5mm (0.098")	2.5mm (0.098")
Mass Per Unit Area	4.438kg/m²	4.438kg/m²	4.438kg/m²
Pieces/Carton	36	12	10
Coverage/Piece	0.0619 Sq.M. (¾ Sq.Ft.)	0.244 Sq.M. (2.63 Sq.Ft.)	0.348 Sq.M. (3.75 Sq.Ft.)
Coverage/Carton	2.23 Sq.M. (24 Sq.Ft.)	2.93 Sq.M. (31.56 Sq.Ft.)	3.48 Sq.M. (37.5 Sq.Ft.)
Coverage/Pallet	48 Cartons (107.04 Sq.M./1,152 Sq.Ft.)	40 Cartons (117.2 Sq.M./1,262.4 Sq.Ft.)	60 Cartons (208.8 Sq.M./2,250 Sq.Ft.)
Coverage/Container	42 Pallets (4,495.68 Sq.M/48,384 Sq.Ft.)	40 Pallets (4,688 Sq.M./50,496 Sq.Ft.)	21 Pallets (4,384.8 Sq.M./47,250 Sq.Ft.)
Aspecta® One Limited Commercial Warranty¹	Material: 20 Years (100%) Labour: 10 Years (Pro-Rated)	Material: 20 Years (100%) Labour: 10 Years (Pro-Rated)	Material: 20 Years (100%) Labour: 10 Years (Pro-Rated)

PHYSICAL PROPERTIES & PACKAGING - TILE (DRYBACK 2.5MM/0.55MM)			
Size	304.8mm x 914.4mm (12" x 36")	457.2mm x 457.2mm (18" x 18")	609.6mm x 609.6mm (24" x 24")
Construction	Solid Vinyl Tile/LVT	Solid Vinyl Tile/LVT	Solid Vinyl Tile/LVT
Use	Commercial	Commercial	Commercial
Wear Layer	0.55mm (22 mil)	0.55mm (22 mil)	0.55mm (22 mil)
Finish	Urethane Coating with Ceramic Bead Particles	Urethane Coating with Ceramic Bead Particles	Urethane Coating with Ceramic Bead Particles
Thickness	2.5mm (0.098")	2.5mm (0.098")	2.5mm (0.098")
Mass Per Unit Area	4.438kg/m²	4.438kg/m²	4.438kg/m²
Pieces/Carton	12	16	9
Coverage/Piece	0.278 Sq.M. (3 Sq.Ft.)	0.209 Sq.M. (2.25 Sq.Ft.)	0.371 Sq.M. (4 Sq.Ft.)
Coverage/Carton	3.34 Sq.M. (36 Sq.Ft.)	3.34 Sq.M. (36 Sq.Ft.)	3.34 Sq.M. (36 Sq.Ft.)
Coverage/Pallet	45 Cartons (150.3 Sq.M./1,620 Sq.FT.)	48 Cartons (160.32 Sq.M./1,728 Sq.Ft.)	20 Cartons (66.8 Sq.M./720 Sq.Ft.)
Coverage/Container	30 Pallets (4,509 Sq.M./48,600 Sq.Ft.)	30 Pallets (4,809.6 Sq.M./51,840 Sq.Ft.)	66 Pallets (4,408.8 Sq.M./47,520 Sq.Ft.)
Aspecta® One Limited Commercial Warranty¹	Material: 20 Years (100%) Labour: 10 Years (Pro-Rated)	Material: 20 Years (100%) Labour: 10 Years (Pro-Rated)	Material: 20 Years (100%) Labour: 10 Years (Pro-Rated)

EUROPEAN/INTERNATIONAL STANDARDS - MANUFACTURING & USAGE (EN ISO 10582)				
Description	Standard	Symbol	Requirements	Results
Identification	EN ISO 10582	N/A	Type I: Wear Layer Binder Content ≥80%	Passes Requirements
Classification (Level of Use)	EN ISO 10582 EN ISO 10874	  	Domestic – Heavy (Class 23) Wear Layer (Nominal): ≥0.30mm Thickness (Nominal): ≥1.5mm Commercial – Heavy (Class 33) Wear Layer (Nominal): ≥0.55mm Thickness (Nominal): ≥2.0mm Light Industrial – General (Class 42) Wear Layer (Nominal): ≥0.55mm Thickness (Nominal): ≥2.0mm	Passes Requirements (Nominal) Passes Requirements (Nominal) Passes Requirements (Nominal)
Size, Squareness, and Straightness	EN ISO 24342		Size: ≤0.15% from Nominal Squareness/Straightness: If size ≤400mm: ≤0.25mm If size >400mm: ≤0.35mm	Passes Requirements
Thickness	EN ISO 24346/ EN 428		Average (from Nominal): +0.13mm / -0.10mm Any Sample (from Average): ±0.15mm	Passes Requirements
Mass per Unit Area	EN ISO 23997/ EN 430		+13% / -10% from Nominal	Passes Requirements
Dimensional Stability	EN ISO 23999/ EN 434		≤0.25%	Surpasses Requirements
Curling	EN ISO 23999/ EN 434	N/A	≤2mm	Surpasses Requirements
Flexibility	EN ISO 24344 (Method A)/ EN 435		No cracks (20mm Mandrel)	Passes Requirements
Residual Indentation	EN ISO 24343-1/ EN 433		≤0.1mm	Surpasses Requirements
Castor Chair	ISO 4918		After 25,000 cycles: Delamination – None Appearance ≤ “Slight Change”	Passes Requirements
Color Fastness to Light	ISO 105-B02, Method 3		≥Grade 6	Surpasses Requirements

EUROPEAN/INTERNATIONAL STANDARDS - CE CERTIFICATION/TESTING				
Description	Standard	Symbol	Requirements	Results
CE Certification	EN 14041		Refer to Standards Below	Refer to Results Below
Reaction to Fire (and Smoke Production)	EN 13501-1 EN ISO 9239-1 EN ISO 11925-2		B_{fl} – s1 Classification Critical Flux: ≥8.0kW/m² Flame Spread: ≤150mm within 20s Smoke value as % x min: ≤750	Passes Requirements
Content of PCP (pentachlorophenol)	EN 14041		<5ppm	Passes Requirements

EUROPEAN/INTERNATIONAL STANDARDS - CE CERTIFICATION/TESTING (CONTINUED)				
Description	Standard	Symbol	Requirements	Results
Formaldehyde Emission	EN 717-1		Class E1: Release ≤0.124mg/m³	Passes Requirements
Slip Resistance (Dry)	EN 13893		Class DS: Coefficient of Friction ≥0.30	Surpasses Requirements

EUROPEAN/INTERNATIONAL STANDARDS - AUXILIARY PERFORMANCE & SAFETY				
Description	Standard	Symbol	Requirements	Results
Slip Resistance (Wet) ²	DIN 51130	N/A	Grade R10: ≥10° and <19°	Passes/Surpasses (Except Satin Emboss)
Slip Resistance (Australia/New Zealand)	AS 4586	N/A	Wet Pendulum (Slider 96) P3: 35-44 SRV Oil-Wet Inclining Platform Grade R10: ≥10° and <19°	Passes/Surpasses
Chemical Resistance	EN ISO 26987/ EN 423		N/A	No effect
Thermal Resistance	EN 12667		N/A	0.01745 m²K/W at 10°C
Static Electrical Propensity	EN 1815, Method A		N/A	Average: -3.4kV
Abrasion/Wear Resistance	EN 660-2		N/A	F _v ≤2.0mm³/100r
Sound Reduction ³	EN ISO 10140-3 ISO 717-2 EN ISO 140-8		N/A	ΔL _w = 2dB C _{la} = -2dB
Walking Noise on Floors ⁴	EN 16205		N/A	L _{n,walk,A} = 83.6 dB u _{-ges,A} = 0.38 dB
Product-Content Safety	REACH SVHC 168	N/A	N/A	Passes Requirements

STANDARDS - SUSTAINABILITY	
Standard	Description
FloorScore® CHPS 01350 LEED EQ 4.3	This product is FloorScore® Certified (SCS-FS-03876) and has thus been found to comply with the volatile organic compound emissions criteria of the California Section 01350 standard. FloorScore® Certification can also be used as an alternative path to obtaining LEED EQ 4.3 credit.
NSF/ANSI 332	This product is NSF/ANSI 332 Gold Certified (SCS-RF-04041) and thus meets benchmark standards for social, environmental and economic sustainability as defined by the NSF/ANSI 332 standard. The assessment evaluated product design, product manufacturing, long-term value, end-of-life management, corporate governance, and innovation.

FOOTNOTES
1) **Aspecta® One Limited Commercial Warranty:** Please see full terms and conditions of our warranties at www.aspectaflooring.com.
2) **Slip Resistance-Wet (DIN 51130):** Results vary with emboss. Grade R9: Satin; Grade R10: Barnside, In-Register, Natural Timber, Sawcut, Textured Concrete.
3) **Sound Reduction (EN ISO 10140-3, ISO 717-2, EN ISO 140-8):** ΔL_w = Weighted Reduction of Impact Sound Pressure Level; C_a = Spectrum Adaptation.
4) **Walking Noise on Floors (EN 16205):** L_{n,walk,A} = A-Weighted Sound Pressure Level; u_{-ges,A} = Uncertainty of A-Weighted Sound Pressure Level



ASPECTA[®]
A NEW DIMENSION IN FLOORING

ERME Office:
ASPECTA BV
Argon 37a
4751XC Oud Gastel
The Netherlands
Tel: +31 (0) 88 1662500
info@aspectaflooring.com

USA Office:
ASPECTA US
15 Oakwood Ave.
Norwalk, CT 06850
USA
Tel +01 (855) 4007732
info@aspectaflooring.com

APAC Office:
ASPECTA APAC P/L C/- BDO
Level 14, 140 William St.
Melbourne, 3000. Vic
Australia
Tel: +61 (0) 41 2368067
info@aspectaflooring.com

ASPECTAFLOORING.COM