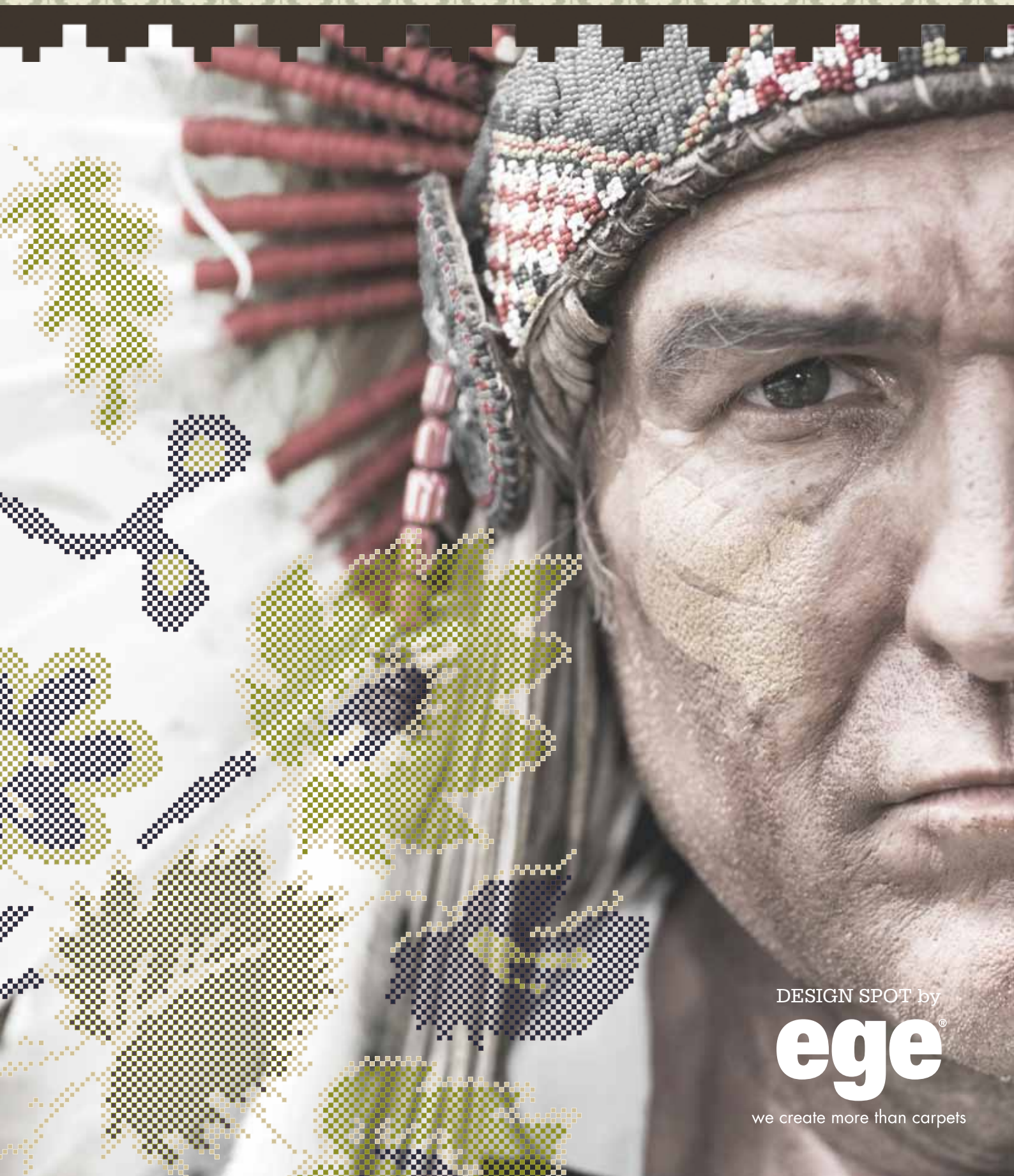


TRIBAL POETRY



DESIGN SPOT by

ege[®]

we create more than carpets



TRIBAL POETRY

While early dawn is slowly breaking,
leaving behind traces of sparkling morning dew,
the hunter moves silently through the forest.

In the midst of a dense, luxuriant forest,
a deer peeking from a tree.
An eagle circling above,
as tribal drums send chanting rhythms through the air.

A cheerful celebration of sparkling colours echoes,
to rhythms of sunbeams gently rising.
Embellished in floral prints and beads.
This is tribal poetry.



RF52755301 Sami Knit
Rep: w: 24.4 cm x l: 24.4 cm

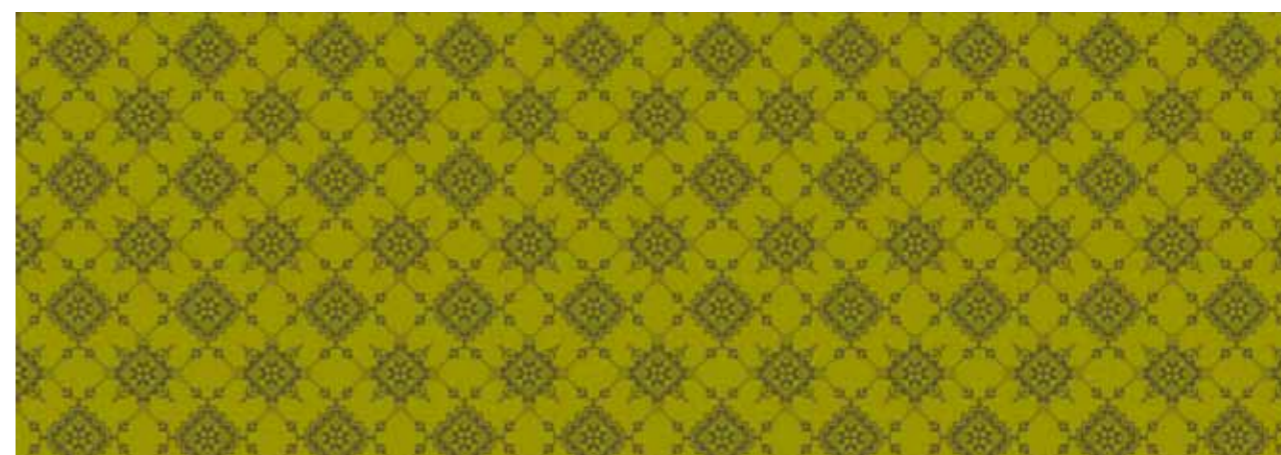
K5275



C1 C2
GB1 GB2

RF52755304 Trondheim Embroidery
Rep: w: 39.1 cm x l: 39.1 cm

K5275



C1 C2
GB8 AC20

RF52755302 Floral Block Print
Rep: w: 390.0 cm x l: 780.3 cm

K5275

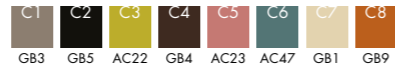


C1 C2 C3 C4 C5 C6
GB1 GB5 AC22 GB4 GB2 GB3

RF52755305 Flying Eagle K5275
Rug: Ø 95 cm Overlock UU0620220 Off White



RF52755306 Peeking Deer K5275
Rug: Ø 127 cm Overlock UU0620170 Brown



RF52755307 Sitting Owl K5275
Rug: Ø 195 cm Overlock UU0620800 Black

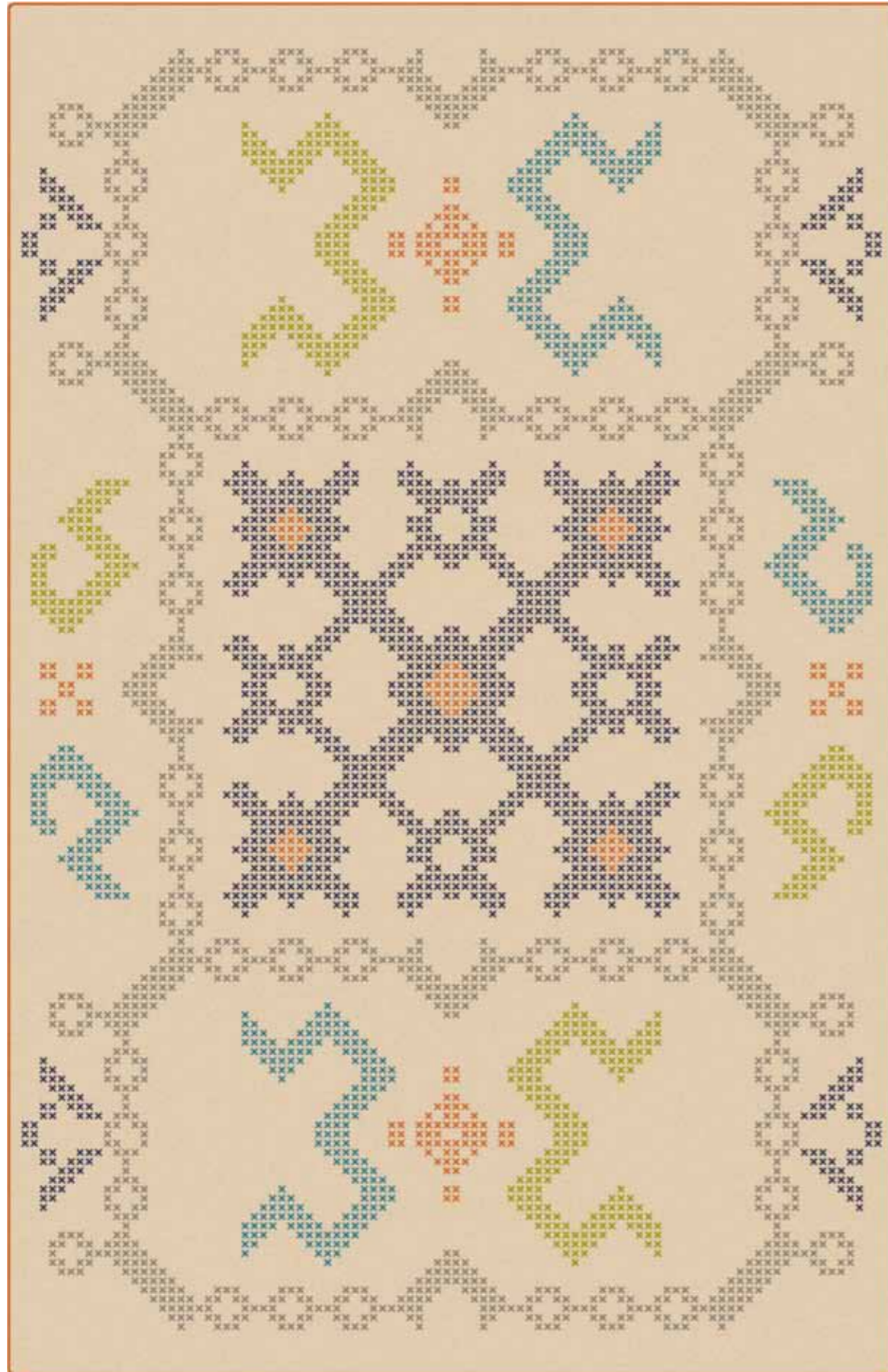


If you wish to order 1 of each of these 3 rugs, please order standard design RF52755319 (see page 18).

RF52755305 Flying Eagle
RF52755306 Peeking Deer
RF52755307 Sitting Owl

RF52755308 Heavy Stitching
Rug: w: 400.0 cm x l: 600.0 cm

K5275
Overlock UU0620920 Orange



C1 C2 C3 C4 C5 C6
GB1 GB9 GB7 GB8 GB3 GB6

RF52755309 Pitsa
Rug: w: 400.0 cm x l: 120.0 cm

K5275
Overlock UU0620390 Dark Green



C1 C2
GB8 AC19

RF52755310 Floral Branch
Rug: w: 400.0 cm x l: 120.0 cm

K5275
Overlock UU0620800 Black



C1 C2 C3 C4 C5
GB3 GB5 GB1 GB4 GB2

RF52755311 Hexagonal
Rug: w: 400.0 cm x l: 120.0 cm

K5275
Overlock UU0620850 Purple



C1 C2 C3 C4 C5 C6 C7 C8 C9 C10
GB1 GB6 GB8 GB2 AC13 AC47 AC18 AC38 GB4 GB9

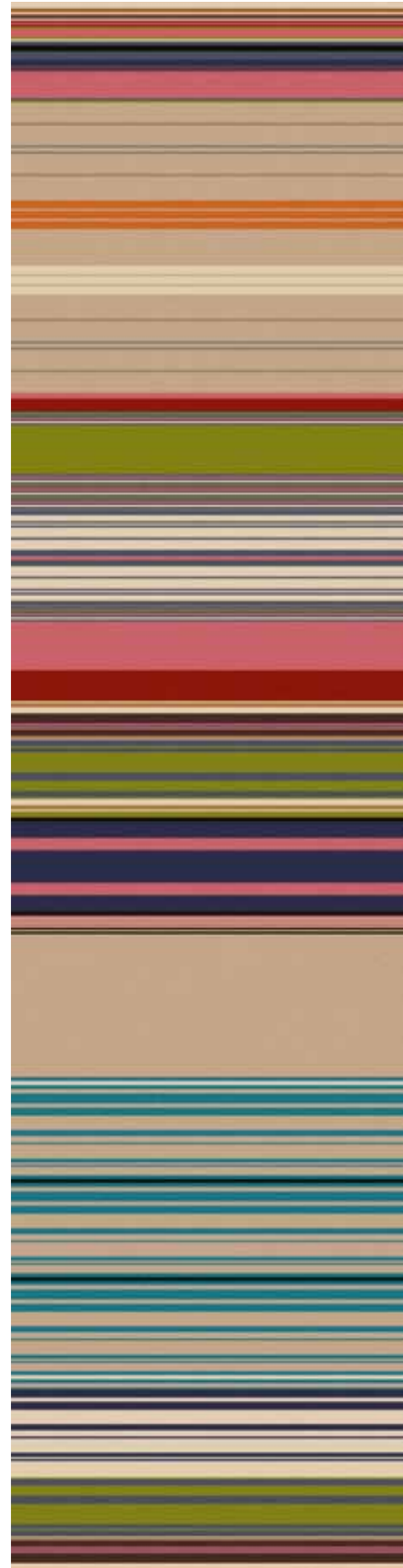
RF52755312 Pow wow
Rug: w: 400.0 cm x l: 600.0 cm

K5275
Overlock UU0620850 Purple



C1	C2	C3	C4	C5	C6	C7	C8	C9
GB7	GB4	GB2	AC19	AC22	GB3	GB9	GB1	GB6

RF52755316 Ancient Path K5275
Rep: w: 195.0 x l: 780.3 cm



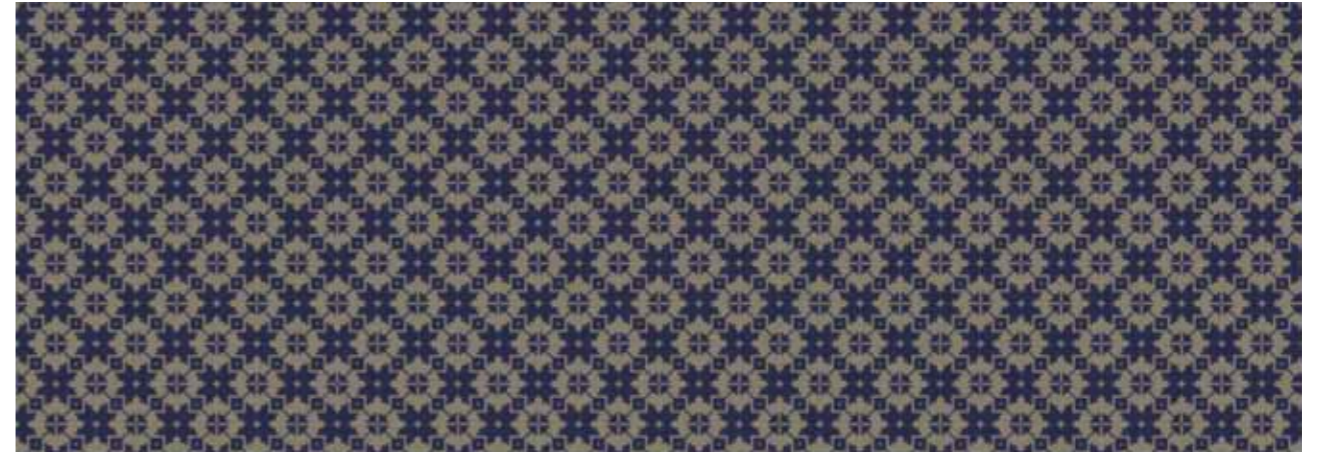
C1	C2	C3	C4	C5	C6	C7	C8	C9
GB4	GB2	AC21	GB6	GB10	AC38	GB11	GB1	GB9
C10	C11	C12	C13					
GB5	AC39	GB7	GB3					

RF52755317 Village Prints K5275
Rep: w: 195.0 cm x l: 780.3 cm



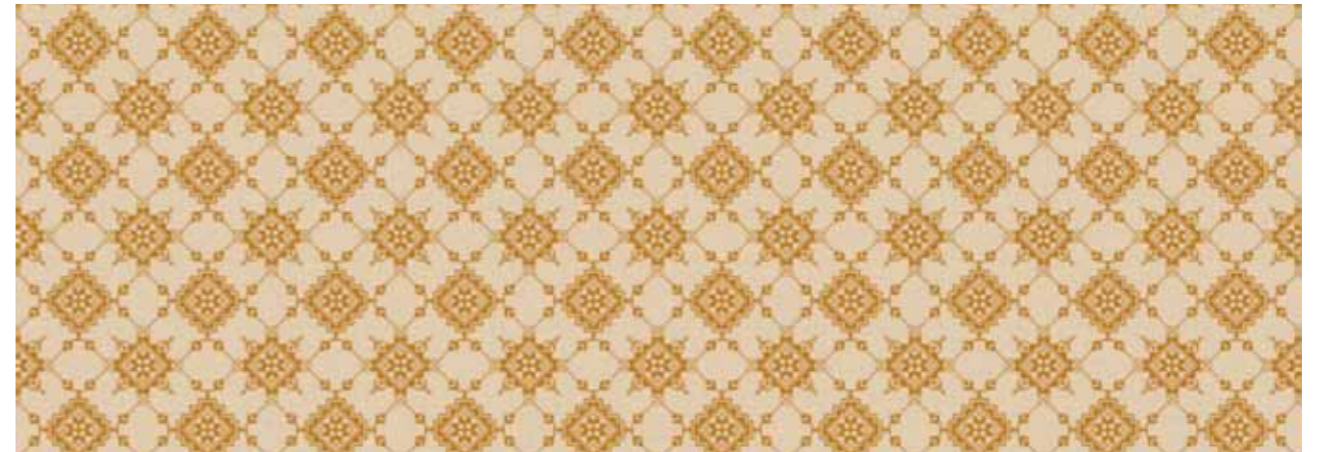
C1	C2	C3	C4	C5	C6	C7	C8	C9
GB5	GB4	GB3	GB2	GB1	GB6	AC39	AC38	GB10
C10	C11	C12	C13					
GB9	GB11	AC21	AC42					

RF52755315 Sami Knit K5275
Rep: w: 24.4 cm x l: 24.4 cm



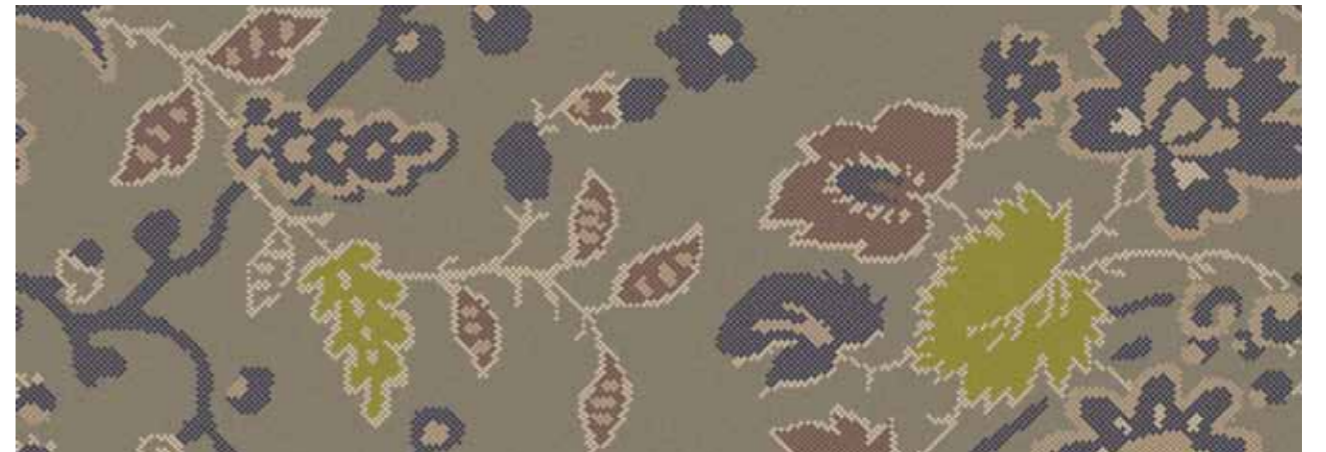
C1	C2
GB3	GB6

RF52755313 Trondheim Embroidery K5275
Rep: w: 39.1 cm x l: 39.1 cm



C1	C2
GB1	AC27

RF52755314 Floral Block Print K5275
Rep: w: 390.1 cm x l: 780.3 cm



C1	C2	C3	C4	C5	C6
GB3	GB1	GB6	GB2	GB8	AC33

RF52755318 Oversize Botanical
Rug: w: 400.0 cm x l: 600.0 cm

K5275
Overlock UU0620170 Brown



C1	C2	C3	C4	C5	C6	C7
GB1	GB4	GB2	AC18	AC22	GB9	GB3



Colour palettes

Colour palette 5220

GB1	A20041	GB2	A20042	GB3	A20043	GB4	K20044	GB5	K20045	GB6	K20046
GB7	K20047	GB8	K20048	GB9	K20049	GB10	K20050	GB11	K20051	GB12	K20012

Accent Colours - for use in areas of max. 10x10 cm

AC43	AC44	AC45	AC46	AC47	AC48	AC49	AC50	AC51	AC52	AC53	AC54	AC55	AC56	AC57	AC58	AC59	AC60
AC61	AC62	AC63	AC64	AC65	AC66	AC67	AC68	AC69	AC70	AC71	AC72	AC73	AC74	AC75	AC76	AC77	

Colour palette 5275

GB1	K28328	GB2	K28329	GB3	K28378	GB4	K28374	GB5	K28366	GB6	K28364
GB7	K28380	GB8	K28379	GB9	K27886	GB10	K28360	GB11	K28367	GB12	K28368

Accent Colours - for use in areas of max. 10x10 cm

AC13	AC14	AC15	AC16	AC17	AC18	AC19	AC20	AC21	AC22	AC23	AC24	AC25	AC26	AC27	AC28	AC29	AC30
AC31	AC32	AC33	AC34	AC35	AC36	AC37	AC38	AC39	AC40	AC41	AC42	AC43	AC44	AC45	AC46	AC47	

Colour palette 5285

GB1	K28521	GB2	K28522	GB3	K28523	GB4	K28524	GB5	K28525	GB6	K28526
GB7	K28527	GB8	K28528	GB9	K28529	GB10	K28530	GB11	K28531	GB12	K20012

Accent Colours - for use in areas of max. 10x10 cm

AC13	AC14	AC15	AC16	AC17	AC18	AC19	AC20	AC21	AC22	AC23	AC24	AC25	AC26	AC27	AC28	AC29	AC30
AC31	AC32	AC33	AC34	AC35	AC36	AC37	AC38	AC39	AC40	AC41	AC42	AC43	AC44	AC45	AC46	AC47	

Colour palette 5295

GB1	K28601	GB2	K28602	GB3	K28603	GB4	K20012	GB5	K28605	GB6	K28606
GB7	K28607	GB8	K28608	GB9	K28609	GB10	K28610	GB11	K28611	GB12	K28632

Accent Colours - for use in areas of max. 10x10 cm

AC13	AC14	AC15	AC16	AC17	AC18	AC19	AC20	AC21	AC22	AC23	AC24	AC25	AC26	AC27	AC28	AC29	AC30
AC31	AC32	AC33	AC34	AC35	AC36	AC37	AC38	AC39	AC40	AC41	AC42	AC43	AC44	AC45	AC46	AC47	

Recolour

Select design



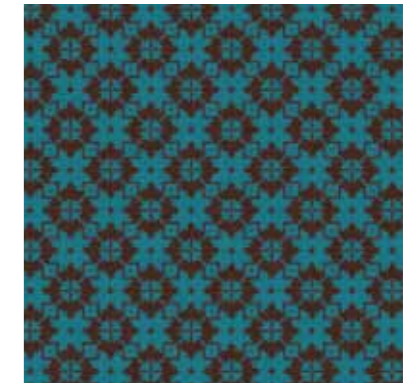
C1 GB1 C2 GB2

Change colour of background



C1 GB4 C2 GB2

Change pattern colour



C1 GB4 C2 GB7

The collection is calculated according to a production width of 4 metres. To ensure optimal utilisation of this width, the largest possible number of rugs is, therefore, always produced across the production width.

Rug Ø 95 – 4 rugs



Rug Ø 127 – 3 rugs



Rug Ø 195 – 2 rugs



Tribal Poetry

17 unique designs in contemporary colour shades
 9 rugs
 8 broadloom designs

All this with:

- Recolour options
- No minimum order requirements
- Qualities from 750 – 1400 g/m²
- Undisputed performance standard, EN 1307
- Use classifications to fit any needs; extra heavy use
- 2-5 days sample service
- Dispatch within 2 weeks from receipt of order



The overlock colours indicated throughout the catalogue can be changed as desired.

Standard roll with all 3 rugs:

RF52751319 Owl, Deer & Eagle
 w: 400.0 cm x l: 200.0 cm

K5275



Identification Characteristics	Standard	highline 80/20-1400 wt	highline 80/20-1100 wt	highline 1100 wt	highline 910 wt	highline 750 wt	highline loop E16 wt	highline loop wt
Structure	ISO 2424	Tufted cut pile	Tufted cut pile	Tufted cut pile	Tufted cut pile	Tufted cut pile	Tufted loop pile	Tufted loop pile
Gauge	ISO 2424	1/8	1/8	1/8	1/10	1/8	1/16	1/10
Pile	DIR 96/73, 96/74	80% wool, 20% polyamide	80% wool, 20% polyamide	100% polyamide	100% polyamide	100% polyamide	100% polyamide	100% polyamide
Coloration	-	Milltron	Milltron	Milltron	Milltron	Milltron	Milltron	Milltron
Backing	-	WTFWoven textile	WTFWoven textile	WTFWoven textile	WTFWoven textile	WTFWoven textile	WTFWoven textile	WTFWoven textile
Dimensions	ISO 3018	400 cm	400 cm	400 cm	400 cm	400 cm	400 cm	400 cm
Total thickness	ISO 1765	8.7 mm	8.3 mm	8.0 mm	7.7 mm	7.4 mm	6.4 mm	6.5 mm
Surface pile thickness	ISO 1766	6.2 mm	5.2 mm	5.6 mm	5.2 mm	5.3 mm	3.1 mm	4.0 mm
Tufts	ISO 1763	137,700 pr. m ²	114,900 pr. m ²	199,080 pr. m ²	235,600 pr. m ²	130,600 pr. m ²	141,300 pr. m ²	164,000 pr. m ²
Total carpet weight	ISO 8543	2,700 g/m ²	2,800 g/m ²	2,600 g/m ²	2,400 g/m ²	2,400 g/m ²	2,100 g/m ²	2,300 g/m ²
Pile yarn weight	eTL	1,400 g/m ²	1,100 g/m ²	1,100 g/m ²	910 g/m ²	760 g/m ²	850 g/m ²	680 g/m ²
Surface pile density	ISO 8543	0.161 g/cm ³	0.139 g/cm ³	0.156 g/cm ³	0.145 g/cm ³	0.116 g/cm ³	0.140 g/cm ³	0.115 g/cm ³
Antislipping protection	-	Yes	Yes	Yes	Yes	Yes	Yes	Yes
Multiproofed	-	Yes	Yes	-	-	-	-	-
Performance Characteristics								
Performance areas	EN1307:2005	Class 33 - Commercial Heavy	Class 22 - Domestic General/Medium	Class 33 - Commercial Heavy	Class 33 - Commercial General	Class 32 - Commercial Heavy	Class 33 - Commercial Heavy	Class 33 - Commercial Heavy
Castor wheel	EN 985	Continuous use	-	Continuous use	Continuous use	-	Continuous use	Continuous use
Suitability for stairs	EN 1963	Yes	-	Yes	Yes	-	-	Yes
Static control	eTL	Permanently antistatic	Permanently antistatic	Permanently antistatic	Permanently antistatic	Permanently antistatic	Permanently antistatic	Permanently antistatic
Acou. insu. from impact noise	EN ISO 717-2	31 dB	-	27 dB	28 dB	-	24 dB	-
Acoustical absorption	ISO 354	0.25 aW	-	0.20 aW	-	-	0.15 aW	-
Suitable for heated floor	ISO 8302	Yes	Yes	Yes	Yes	Yes	Yes	Yes
Safety and Environmental Characteristics								
Indoor air	Lead DfM Certificat	No. 006	No. 006	Green label plus No. 006	Green label plus No. 006	Green label plus No. 006	Green label plus No. 006	Green label plus No. 006
Environmental profile	Bre	-	-	Yes	-	-	-	-
CE Mark	EN 14041	Certified	Certified	Certified	Certified	Certified	Certified	Certified
EC Certificat	EN 14041	0845-CPD-CX10008B	0845-CPD-CX10008B	0845-CPD-CX10004C	0845-CPD-CX10004C	0845-CPD-CX10004C	0845-CPD-CX10014B	0845-CPD-CX10014B
Slip resistance	EN 13896	Class DS	Class DS	Class DS	Class DS	Class DS	Class DS	Class DS
Fire classifications - Brand	IMO EN13501-1 euro class	Certified B _s -S1	Certified B _s -S1	Certified C _{ip} -S1	Certified C _{ip} -S1	Certified C _{ip} -S1	Certified B _s -S1	Certified B _s -S1
Guides								
Installation & adhesive guide	DK, N, S, GB, D, F	DK, N, S, GB, D, F	S, GB, D, F	DK, N, S, GB, D, F	DK, N, S, GB, D, F	DK, N, S, GB, D, F	DK, N, S, GB, D, F	DK, N, S, GB, D, F
Cleaning - Rengering	DK, N, S, GB, D, F	DK, N, S, GB, D, F	DK, N, S, GB, D, F	DK, N, S, GB, D, F	DK, N, S, GB, D, F	DK, N, S, GB, D, F	DK, N, S, GB, D, F	DK, N, S, GB, D, F
Manufacturer Characteristics								
Quality Management	ISO 9001	Audited and verified by Bureau Veritas Certification						
Environmental Management	ISO 14001	Audited and verified by Bureau Veritas Certification						
Eco - Management	EMAS	Audited and verified by Bureau Veritas Certification						
Occupational Health & Safety	DS/OHSAS 18001	Audited and verified by Bureau Veritas Certification						
Carpet Recycling UK	Member	www.carpetrecyclinguk.com						



we create more than carpets

SUBSIDIARIES:

Denmark

France

Germany

Norway

Sweden

United Kingdom

United Arab Emirates

AGENTS/DISTRIBUTORS:

Australasia	India	Pakistan
Austria	Iran	Poland
Bahrain	Ireland	Portugal
Belgium/Luxembourg	Italy	P.R. China - Shanghai
Bosnia - Herzegovenia	Japan	Qatar
Bulgaria	Jordan	Romania
Canada	Kenya	Russia
Croatia	Kuwait	Saudi Arabia
Cyprus	Latvia	Serbia
Czech Republic	Lebanon	Singapore
Estonia	Lithuania	Slovakia
Finland	Macau	Slovenia
Greece	Malta	Spain
Hungary	Montenegro	Switzerland
Hong Kong	Netherlands	Turkey
Iceland	Oman	Ukraine

For further contact information please visit
www.egecarpet.com